



Sugar Mill Chain

Tianjin OuNaiDa Transmissions Technology Co., Ltd

2026

Direct Manufacturer



TEL: +(86) 022 83703208

Email: info@tjond.com

Website: www.tjond.com



Tianjin Ounaida Transmission Technology Co., Ltd. is a leading enterprise specializing in the R&D and manufacturing of high-performance industrial transmission components. Located in a modern industrial park, the company operates a 9,000-square-meter standardized manufacturing facility dedicated to providing

precise and reliable transmission solutions for the global industrial sector. The company has invested heavily in a full suite of high-precision gear and rack processing equipment and high-end CNC machinery, establishing a complete production chain from raw material processing to precision finishing. To ensure the physical accuracy of every component, we utilize cutting-edge Coordinate Measuring Machines (CMM). Operating under the rigorous ISO 9001:2015 quality management system, we guarantee that our products meet the highest industry standards. With over 20 years of profound technical expertise, Ounaida's primary business includes: Precision Gears and Racks, Linear Guides and Blocks, Ball Screws, Various Precision Transmission Components, Non-standard Custom Parts tailored for specialized industrial conditions. Innovation is our core competitiveness. Our in-house R&D team brings together a group of highly experienced senior engineers and skilled frontline technicians. From initial conceptual design and mechanical analysis to final production, our team provides professional perspectives to optimize transmission efficiency and reduce maintenance costs for our clients.



Comprehensive Industrial Transmission Solutions

We offer a comprehensive range of industrial transmission solutions. Our primary product line includes high-precision gears, racks, timing pulleys, sprockets, roller chains, ball screws, linear guides, linear modules, and other related transmission components.

1. CNC Machining & Assembly

Utilizing advanced CNC machining centers, we provide deep customization services ranging from single-part precision machining to complex component assembly. We ensure micron-level accuracy to meet the most demanding requirements for high-difficulty and non-standard parts.

2. Customized Gearbox Solutions

We specialize in the R&D and customization of various industrial gearboxes. Our one-stop power transmission services cover everything from structural design and gear ratio optimization to final assembly, ensuring high efficiency and stable performance under the most complex operating conditions.

Professional Production Team:

Providing Integrated Design, Drafting, and Manufacturing Services, ensuring the flawless execution of every solution.



Professional Sale Team:

Providing 24hours online service, accurate product quotations, and order tracking services.



Professional Technical Team:

Provides professional solutions, help maintenance customers reduce costs and improve operational efficiency.

Professional After-sale Team:

Comprehensive after-sales support eliminates your worries.

Advanced Equipments



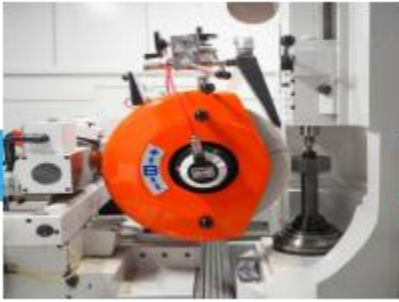
CNC Gear Hobbing



CNC Cylindrical Grinding



CNC Machine Center



CNC Gear Grinding



CNC Gear Chamfering



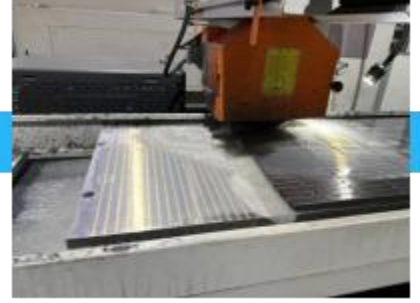
Milling and Turning



CNC Gear Rack Milling



CNC Gear Rack Grinding



CNC Surface Grinder



CNC Rack Chamfering

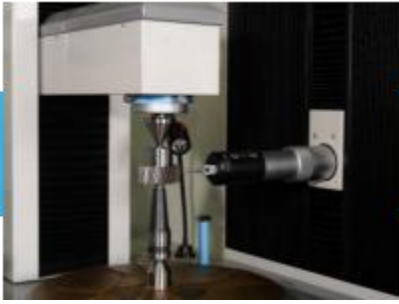


Rack End-Face Milling



CNC Cleaning Machine

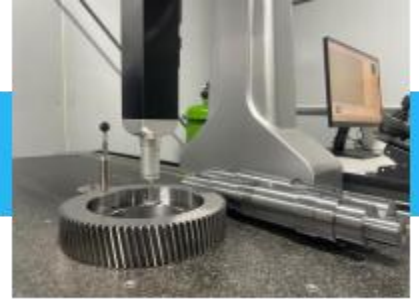
Test machines



CNC Gear Test Center



Pre-stretching and Running-in

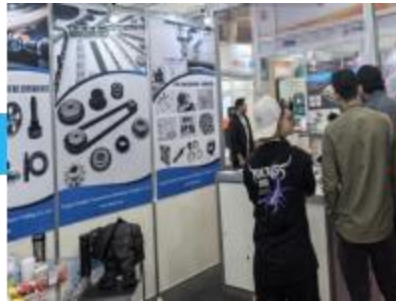


CMM

Exhibitions



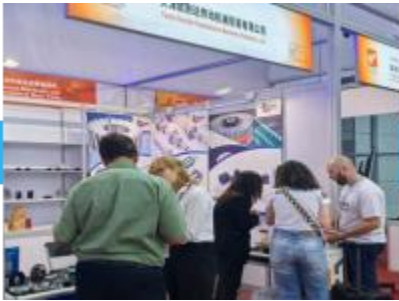
Poland



Brazil



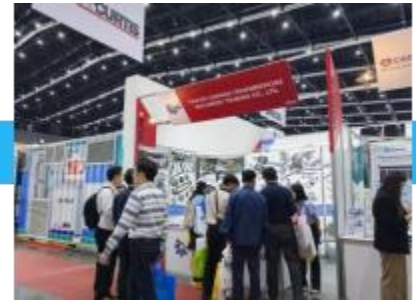
Russia



Canton Fair



Türkiye



Thailand



ISO 9001:2015

Through standardized production management and rigorous quality monitoring processes, we ensure that every stage—from design and raw material procurement to final delivery—strictly complies with international quality standards. We are committed to continuous improvement, providing our clients with high-performance industrial solutions characterized by exceptional stability and excellence.

CE Marking

Our products fully comply with EU CE certification standards, reflecting our adherence to mandatory EU requirements for safety, health, and environmental protection. The CE mark serves not only as a gateway to the international market but also as our solemn commitment to product safety and reliability, ensuring global applicability.

RoHS Compliance

The company strictly adheres to the RoHS environmental directive, implementing rigorous controls over hazardous substances such as lead, mercury, and cadmium throughout the manufacturing process. We are committed to green manufacturing, ensuring all transmission components are safe, eco-friendly, and non-toxic. By meeting international green trade standards, we actively fulfill our social responsibility for environmental protection while pursuing high-efficiency industrial production.



Intelligent Manufacturing

Utilize standardized operational procedures (SOPs) to ensure high efficiency and exceptional stability throughout the manufacturing process



Full-Process Monitoring & Management

From raw material procurement to final product dispatch, we implement a comprehensive digital monitoring system. This ensures that every manufacturing stage adheres strictly to rigorous international quality standards.



Technical Assurance

Our senior technical team focuses on process innovation and solving complex technical challenges, providing a solid foundation for the high-precision manufacturing of every product.



Quality Traceability

We have established a comprehensive quality inspection archive and an after-sales traceability system. This ensures that every product leaving our facility is fully documented and verifiable, providing our clients with absolute peace of mind regarding quality.



Instant Response

We have established an efficient customer communication and feedback mechanism to ensure that all inquiries and technical consultations receive a prompt, first-time response.



Tailored Solutions

We provide flexible, customized design services, optimizing solutions based on customer blueprints or specific operational requirements to precisely transform product concepts into reality.

Global Reach · Boundless Connectivity

With a logistics network spanning over 200 countries, we maintain deep partnerships with major global airlines and ports to ensure seamless, reliable transshipment worldwide.



Ultimate Speed · Punctual Delivery

By optimizing route planning and multimodal transport paths, we significantly shorten cross-border transit cycles and ensure highly controllable delivery timelines.



Competitive Freight · High Cost-Efficiency

Leveraging our large-scale transportation volume and direct first-hand booking channels, we eliminate middleman markups. This allows us to provide highly competitive freight solutions that significantly reduce your total integrated logistics costs.



Efficient Flow · Rapid Clearance

Our professional customs teams are stationed at core logistics hubs, deeply familiar with international customs policies and compliance procedures. By providing pre-clearance services, we drastically accelerate processing speeds and minimize inspection risks.



Full Visibility · Worry-Free After-Sales

By integrating an advanced digital logistics tracking system, we provide real-time updates on shipment status. Additionally, we assign a dedicated account manager to each client, offering one-stop, full-process consultation and after-sales assurance from order placement to final delivery.

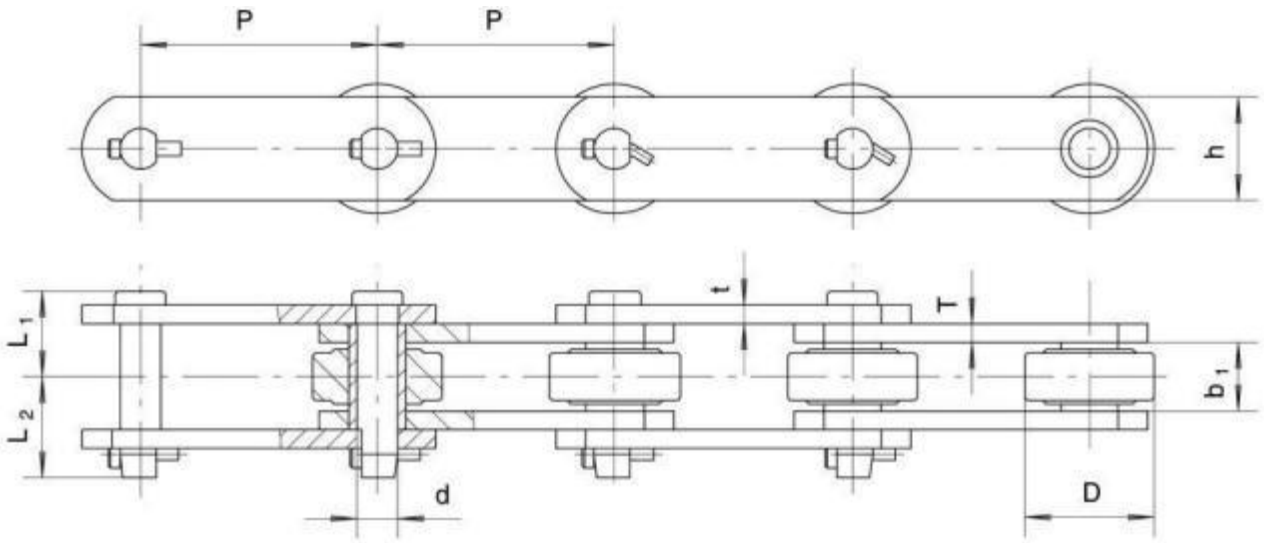


Professional Packaging · Zero-Damage

We provide both standardized and customized reinforced packaging services. Utilizing high-strength anti-collision and shock-absorbing materials, we implement specialized reinforcement for precision products to ensure the total safety of your cargo throughout the entire journey.



直板型糖机链 Straight Sidebar Type Sugar Mill Chain

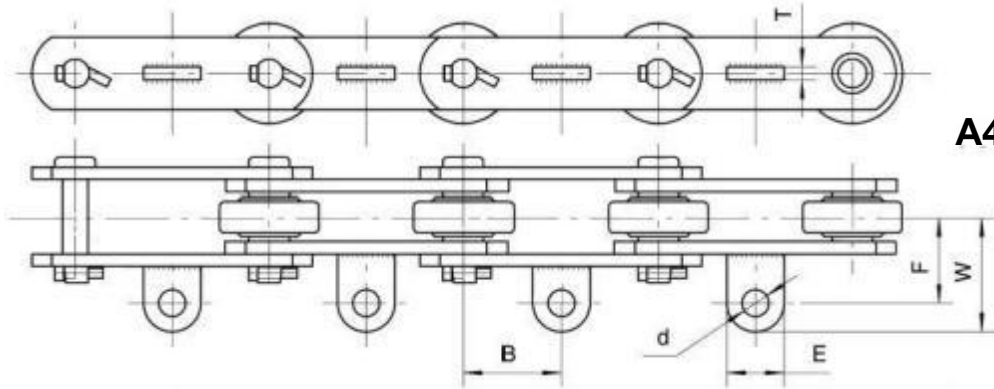


链号	节距	内节内宽	滚子外径	销轴			链板		最小抗拉强度	每米净重		
Chain No.	Pitch	Width between inner plates	Roller diameter	Pin			Plate		Ultimate tensile strength	Weight per meter		
				D	L ₁	L ₂	H	t/T			Q(min)	q
				mm	mm	mm	mm	mm			mm	mm
P77.5	77.5	36.7	31.7	16	39.5	47.5	38	8	188	10.3		
0904	101.6	29.3	50.8	17.46	31.1	47.4	44.5	8	178.4	13.16		
09060	152.4	37.7	69.85/76.2	18.9	45.2	49.1	50.8	9.5	250	17.2/18.36		
09061	152.4	37.7	69.85	18.9	44.9	50.3	57.2	9.5	377.9	18.74		
1796	152.4	37.8	69.85	22.23	44.2	52.9	57.2	9.5	444.5	18.5		
			76.2							19.5		
			73							19.2		
09063	152.4	38	76.2	23.83	47.4	54.6	60.3	10.3	622.3	21.88		
C09063	152.4	38	76.2	23.83	47.4	54.6	61.9	10.3	635	22.2		
GC09063	152.4	38	76.2	23.8	46.7	56.3	63.5	10.3	600	23.67		
SS996	152.4	38.1	69.85	19.05	46.83	51.6	50.8	9.5	311	17.55		
DN2184	152.4	34.9	76.2	22.35	43.9	51.2	50.8	9.5	355.6	18.3		
SS960	152.4	38.1	69.85	21.84	51.6	61.1	57.2	12.7	333.3	31.24		
SS600	152.4	38.1	69.85	22.23	47.05	53	58.7	9.5	444.5	20.83		
SS1131	152.4	38.1	76.2	19.05	46.83	51.6	50.8	9.5	208	18.6		
SS1114	152.4	32.5	50.8	15.88	38.5	43.2	38.1	7.9	124.46	11.8		
SS800	203.2	46.04	88.9	25.15	57.94	60.33	76.2	12.7	742.3	29.76		
SS2315	228.6	43	76.2	22	49	58	9.5	63.5	274	27.23		

销轴与套筒有碳钢和马氏体不锈钢两种材质。

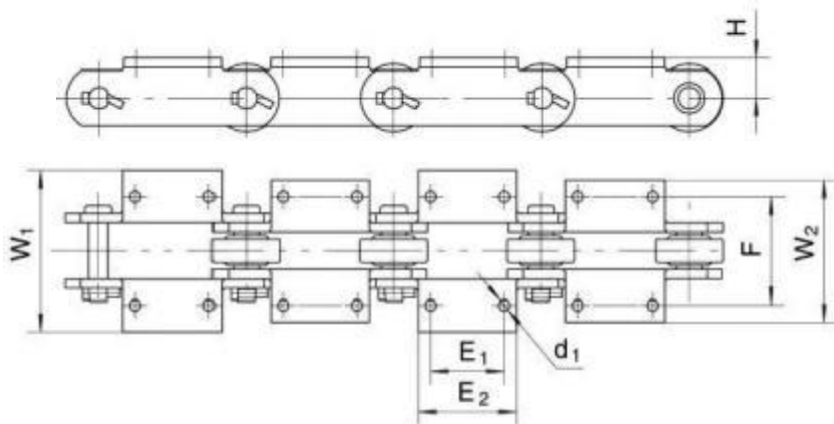
there are two kinds of materials for pin and bushing, which are Carbon steel and Martensite stainless steel.

直板型糖机链附件 Straight Sidebar Type Sugar Mill Chain Attachments



A42 AS2

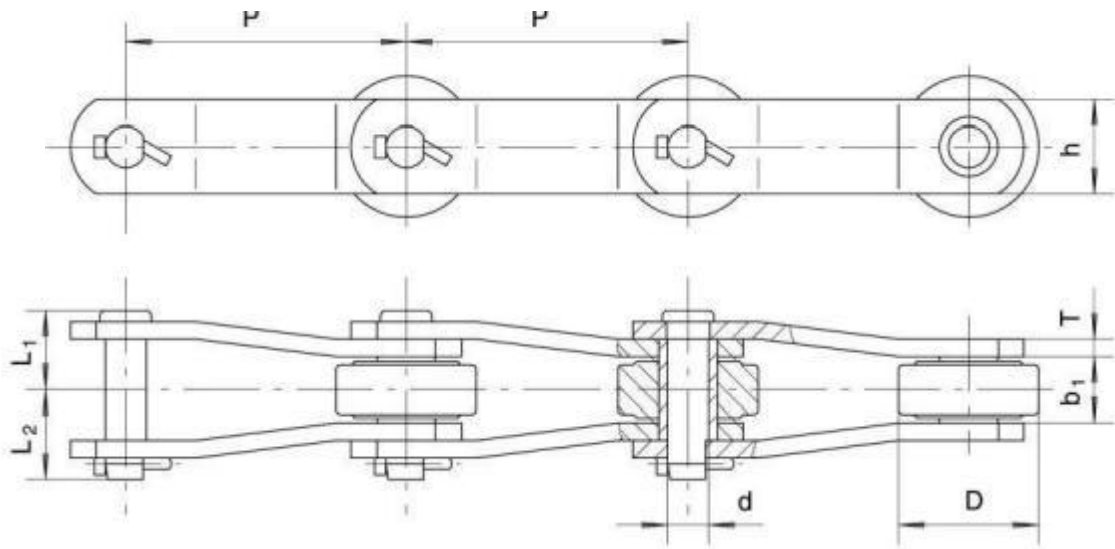
Chain No.	B	F	W	E	d	T
	mm	mm	mm	mm	mm	mm
09060	76.2	67	87.4	45	21	15
09061	76.2	67	87.4	45	21	15
1796	76.2	67	87.4	45	21	15
GC09063	76.2	63.5	83	45	20	15.3
SS1131	76.2	65.88	91.28	50.8	17.46	15.48
DN2184	76.2	66.7	92.1/88.74	50.8/44	21	15



K2

Chain No.	H	E1	E2	d1	F	W1	W2
	mm	mm	mm	mm	mm	mm	mm
0904	31.8	36.6	66.7	9.5	89	137.4	137.4
09060	41.3	76.2	114.3	13	111.1	171.5	151.1
09061	41.3	76.2	114.3	13	111.1	165.1	144.7
1796	41.3	76.2	114.3	11.1/13/14	111.1	165.1	144.7
C09063	44.5	76.2	114.3	14.3/12.7	111.1	165.1	143.1
SS996	41.4	76.2	139.7	12.7	111.25	152.4	152.4
SS1131	41.28	66.68	139.7	14.29	152.4	187.3	187.3
SS960	41.28	76.2	111.13	14.29	111.13	152.4	152.4
SS600	41.4	76.2	111.25	12.7	111.25	147.32	147.32
SS800	55.6	114.3	177.8	17.46	131.8	182.6	182.6

弯板型糖机链 Cranked Sidebar Type Sugar Mill Chains

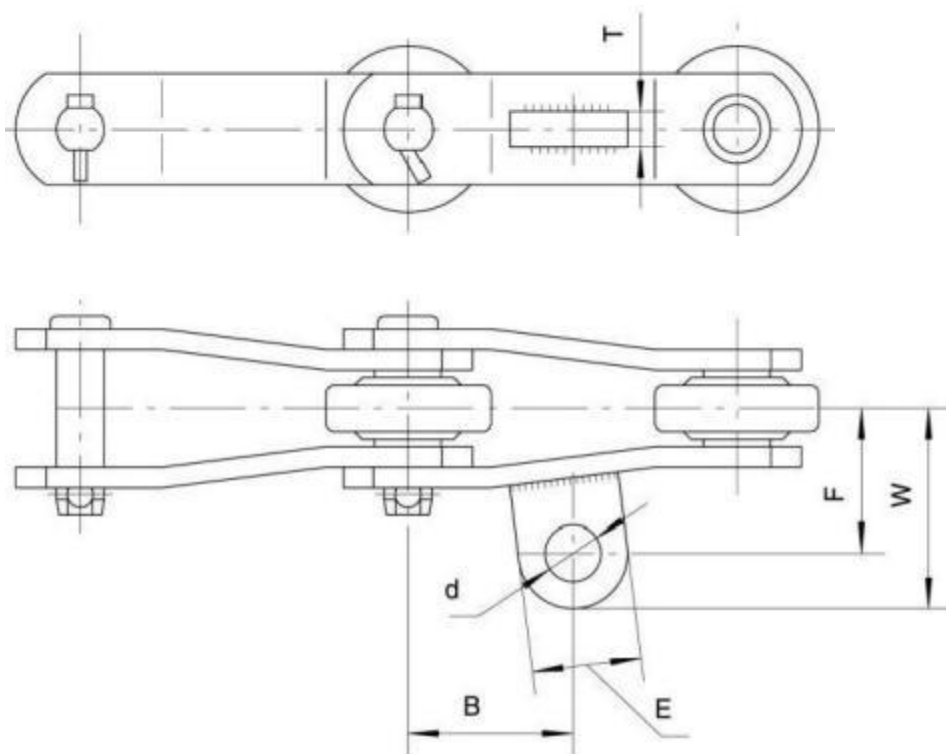


链号	节距	窄端内宽	滚子外径	销轴			链板		最小抗拉强度	每米净重
Chain No.	Pitch	Inside diameter	Roller diameter	Pin			Plate		Ultimate tensile strength	Weight Per meter
	P	b, (min)	D(max)	d	L,	L2	h	T	Q(min)	q
	mm	mm	mm	mm	mm	mm	mm	mm	kN	kg/m
CR09060	152.4	38.2	69.9	18.9	45	53	50.8	9.5	303.8	17.5
CR09063	152.4	38	76.2	23.83	47.1	54.9	60.3	10.3	622.3	21.83
CR1796	152.4	37.8	69.85/76.2	22.23	44.2	52.9	57.2	9.5	444.5	18.59/21.3
D2184	152.4	34.9	76.2	22.23	43.9	51.2	50.8	9.5	355.6	17.7
PB2184	152.4	36	76.2	22.23	45.4	52.8	52	10	396	19.31
SS800	203.2	46.1	88.9	25.4	59.9	69.1	75	12.7	750	30.58
8184	203.2	45.9	88.9	25.4	59.7	65.8	69.9	12.7	742.4	29.2
2284	228.6	36.9	90	25.4	45.4	53	65	10	420	21.88
2284H	228.6	36.9	90	25.4	49.5	57.2	65	12	510	24.7
22840	228.6	46	99	32	62.7	72.7	86	15	884	40.21
XM228.6V2	228.6	36.9	89	25.4	47.9	55.1	65	10	512	22.772
SS1113	102.6	37.5	50.8	17.5	38	45	38.1	6.3	93.1	13.2
SS1125	101.6	32.6	50.8	17.4	38	45	44.5	7.9	152.9	14.3
SS1130	152.4	37.6	63.5	19.05	38.5	45.6	50.8	6.4	137	12.8

销轴与套筒有碳钢和马氏体不锈钢两种材质。

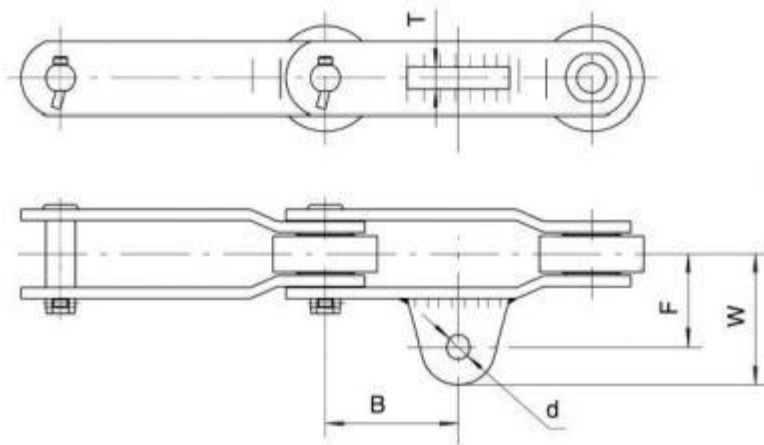
there are two kinds of materials for pin and bushing, which are Carbon steel and Martensite stainless steel.

弯板型糖机链附件 Cranked Sidebar Type Sugar Mill Chains-Attachments



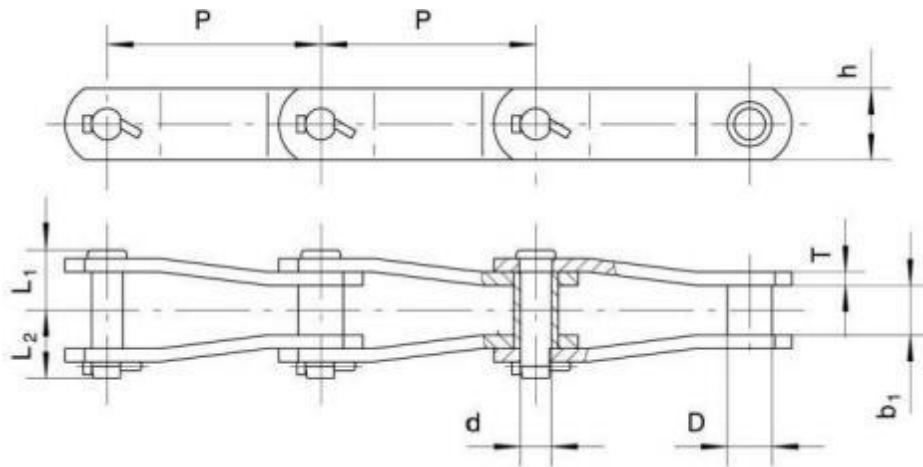
Attach No.	Chain No	B	F	W	E	d	T
		mm	mm	mm	mm	mm	mm
A42	CR09060	76.2	63.5	83.5	44	20	15.5
	CR1796	76.2	66.9	89.5	45	21	15
	CR09063	76.2	74.6	99.6	50	20.64	15
	D2184	76.2	66.78	92.1/88.7	50.8/44	21	15
	D2184B	76.2	66.7	88.7	44	21	15
	PB 2184	76.2	66.7	92.4	55	17	15
	8184	101.6	81.8	107.2	50.8	19.8	15
	SP2184S	76.2	71.7	97.1	50.8	16	15
	SS1130	76.2	67	82.6	44.5	16.7	16
	22840	120	97	122	50	21	15
	SS1113	50.8	60.3	80.3	49.5	16.8	13.5
	SS1124	50.8	50.8	68.3	35	11	10.3
	SS1125	50.8	54	72.3	42	16.7	12.7
	SS800	101.6	81.7	107.1	68	17	15.5

弯板型糖机链附件 Cranked Sidebar Type Sugar Mill Chains-Attachments



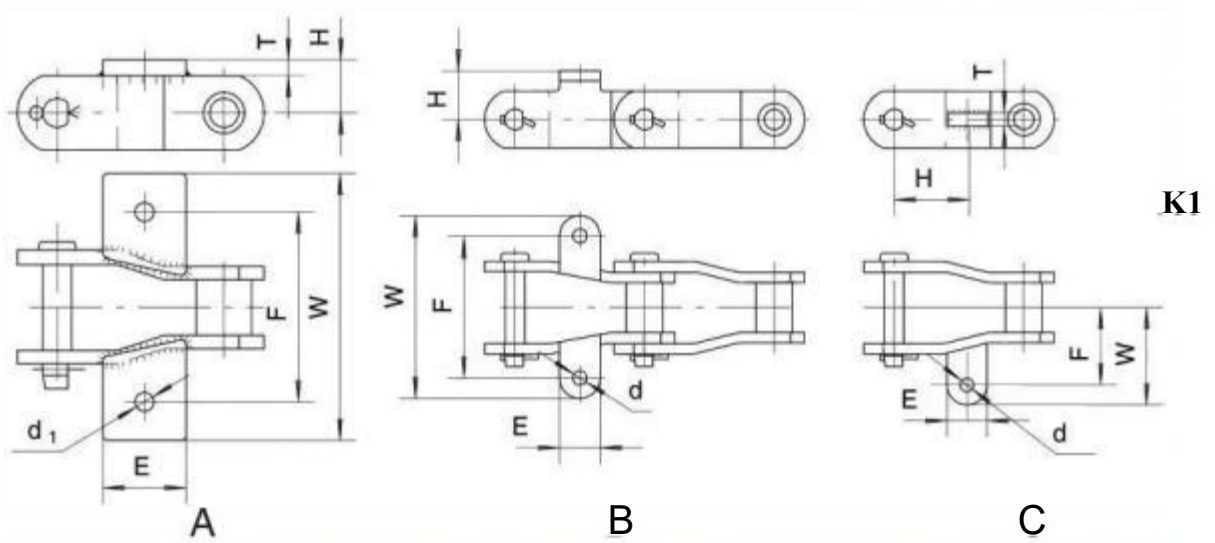
AS2

Attach No.	Chain No.	B	F	W	d	T
		mm	mm	mm	mm	mm
AS2	2284	95	80	112	21	16
	2284H	95	80	112	21	16
	P228.6-R90×37.1	113.6	80	112	21	19
	P228.6-R98×12.7	114.3	97	127	21	16/19
	XM228.6V2	95	80	112	21	20

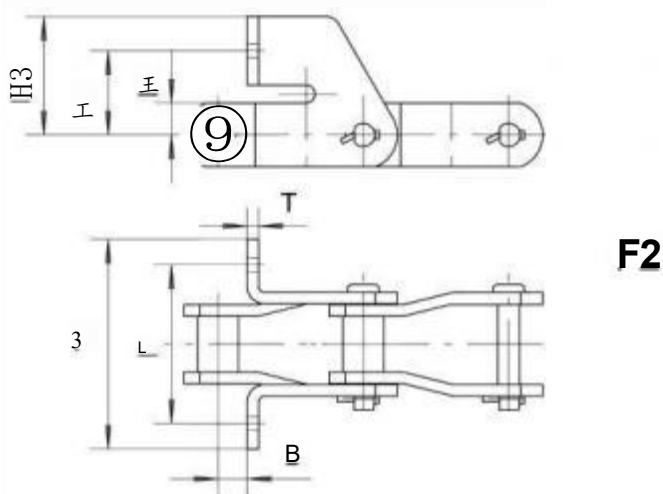


链号	节距	窄端内宽	套筒外径	销轴			链板		最小抗拉强度	每米净重
Chain No.	Pitch	Inside diameter	Bush diameter	Pin			Plate		Ultimate Tensile strength	Weight Per meter
	P	b, (min)	D(max)	d	L,	L2	h	T	Q(min)	q
	mm	mm	mm	mm	mm	mm	mm	mm	kN	kg/m
SS100D	100	33.27	33.27	17.27	38.4	48.6	44.5	8	200	10.47
B5094	101.6	39.8	36.5	15.77	43.3	46.1	44.45	8	180	11.36
SS4103	77.98	25.4	31.75	19.05	42.4	49.8	38.1	11.2	97.8	13.14
SS0340	101.6	41.3	36.5	15.88	45.1	49.2	44.5	8	142	10.9
SS2103	77.98	35.05	31.75	19.05	37.1	42.4	38.1	6.4	128.7	9.42
SS488	66.27	19.05	22.35	11.18	30.2	47.5	25.4	7.9	48.9	6.04

弯板型糖机链附件 Cranked Sidebar Type Sugar Mill Chains-Attachments

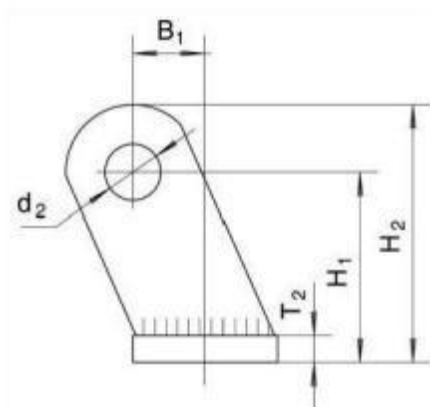
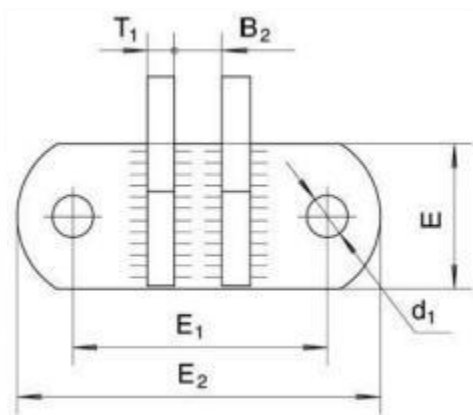


Attach. No.	Chain No.	Type	F	W	E	d	T	H
			mm	mm	mm	mm	mm	mm
K1	SS100D	A	112.78	159	50	11.2	9.5	31.75
	B5094	B	111.2	143	31.8	11.12	8	38.1
	SS0340	B	111.2	143	31.8	11.12	7.9	38
	SS488	B	96.8	128.6	28.6	7	6.3	21.4
A22	SS488	C	48.4	64.3	28.4	7.2	9.5	33.13
A42	SS0340	C	63.5	79.4	38.1	12.7	9.4	50.8



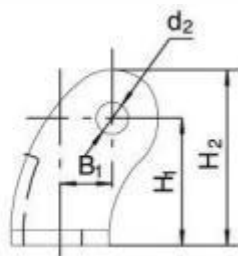
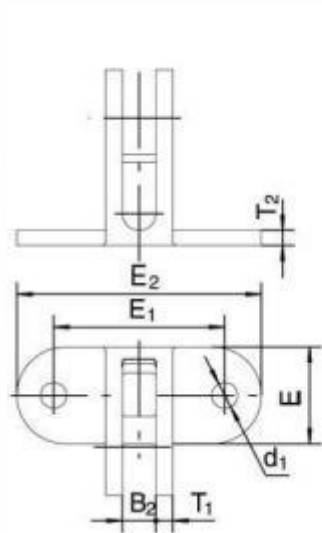
Attach. No.	Chain No.	F	W	B	T	H1	H2	H3
		mm	mm	mm	mm	mm	mm	mm
F2	SS488	51.6	74.7	39.6	7.9	12.7	35	50.8
	SS4103	62	76.2	11.2	11.2	19.05	51.3	66.8
	SS2103	88.9	124	16	6.4	19.05	53.1	69.85

弯板型糖机链附件 Cranked Sidebar Type Sugar Mill Chains-Attachments



Welding Type

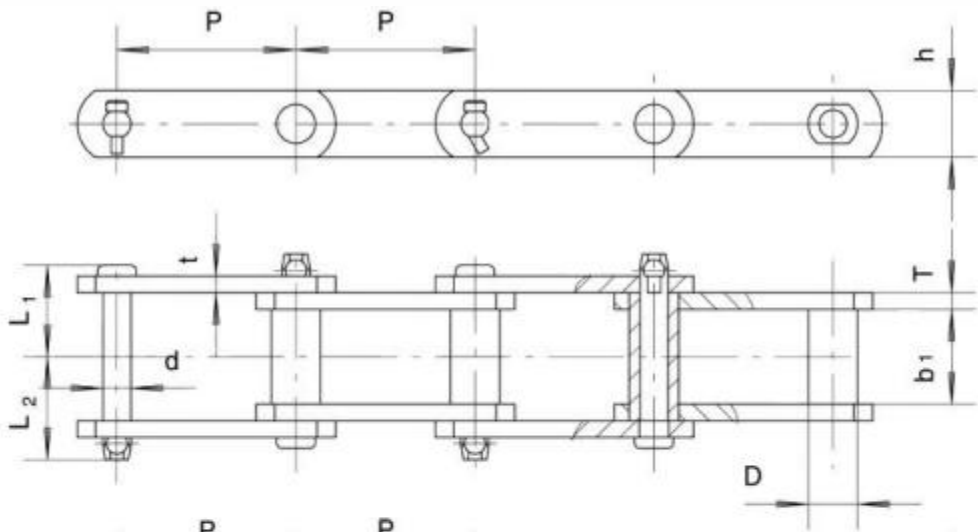
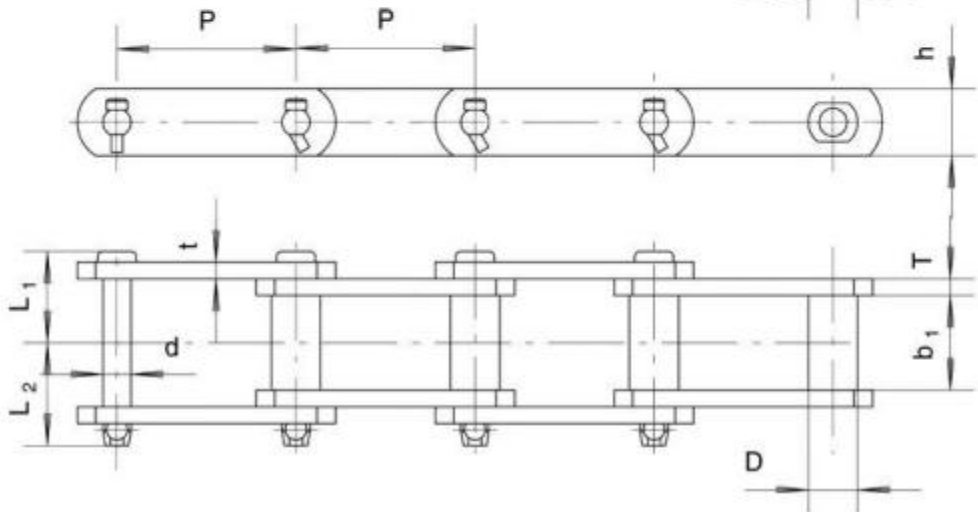
附件号	E	E ₁	E ₂	B ₁	B ₂	T ₁	T ₂	H ₁	H ₂	d ₁	d ₂
	mm	mm	mm	mm	mm	mm	mm	mm	mm	mm	mm
1W	50.8	82.6	114.3	22.17	16.7	9.5	9.5	35	55.5	14.3	21
2W	50.8	88.9	127	25.4	16.8	9.5	9.5	66.8	90.6	13/14.2	20.8
3W	50.8	88.9	127	25.4	17.8	9.5	9.5	66.8	90.6	14.2	16.8
4W	50.8	88.9	127	25.4	16.8	9.5	9.5	66.8	90.6	14.2	19.8



Casting Type

附件号	E	E ₁	E ₂	B ₁	B ₂	T ₁	T ₂	H ₁	H ₂	d ₁	d ₂
	mm	mm	mm	mm	mm	mm	mm	mm	mm	mm	mm
1C	50.8	82.5	114.3	22	16	9.5	9.5	35.1	60.1	12.7	21
2C	50.8	89	127	22	16	9.5	9.5	67	93	12.7	21
3C	52.4	89	127.5	26.92	16	9.55	8.4	66.8	92.8	13.2	16.5
4C	50.8	82.6	115	25.4	17	9.5	7.9	34.9	54.7	14.5	19

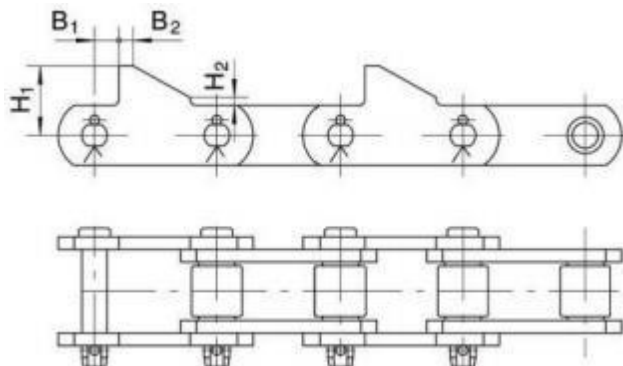
套筒式糖机链 Bush Type Sugar Mill Chains

TYPE A

TYPE B


链号	节距	内节内宽	套筒外径	销轴				链板		最小抗拉强度	每米净重
Chain No.	Pitch	Width between Inner plates	Bushr diameter	Pin				Plate		Ultimate Tensile strength	Weight Per meter
	P	b (min)	D (max)	d	L1	L2	Type	h	t/T	Q (min)	q
	mm	mm	mm	mm	mm	mm		mm	mm	kN	kg/m
SS188	66.27	26.8	22.23	12.7	30.6	34.2	A	28.6	6.4	111.1	5.7
SS131	78.1	32.4	31.75	15.88	41.8	44.9	A	38.1	9.5	177.8	11.62
P80	80	35	23	16	38.9	44.6	B	40	8	240	9.34
SS102B	101.6	53.7	25.4	15.88	52.5	58.1	A	38.1	9.5	177.9	10.37
S111	120.9	63.2	36.6	19.05	57.9	63.6	B	52.3	9.7	214	16.4
SS110	152.4	53.85	31.75	15.88	52.5	58	A	38.1	9.5	177.8	9.54

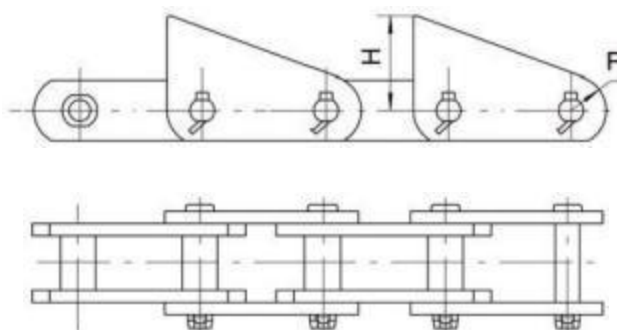
直板型糖机链附件 Straight Sidebar Type Sugar Mill Chain Attachments

H

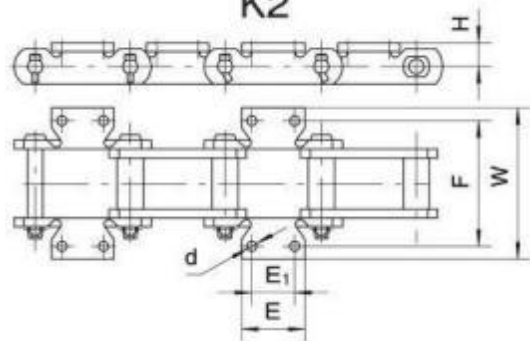


Att No	Chain No.	H1	H2	B1	B2
		mm	mm	mm	mm
H	P77.5	44	5	16.25	9

Att No	Chain No.	H	R
		mm	mm
H	P80	62	23

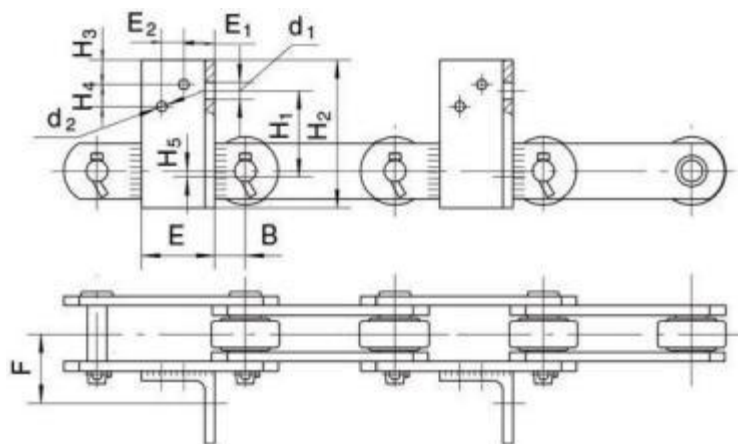


K2



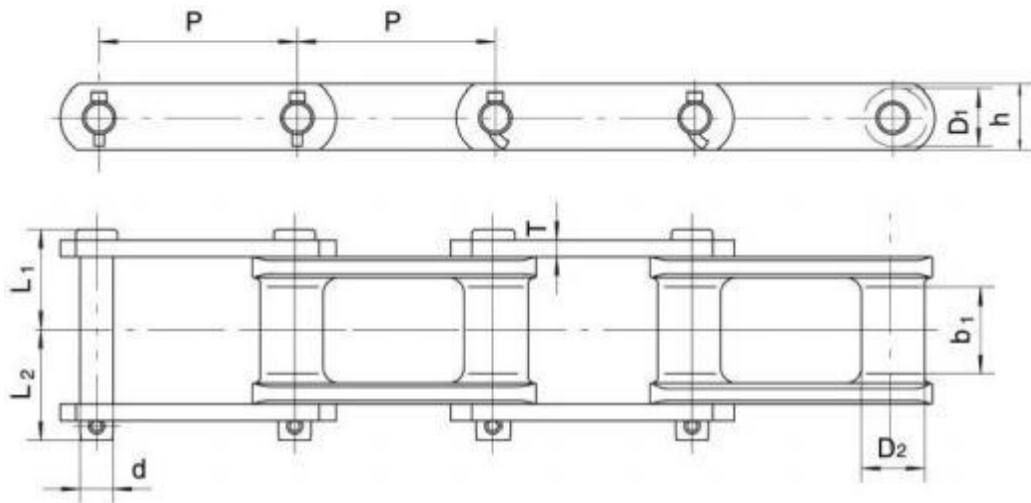
Att No	Chain No.	F	W	H	E	E1	d1 (min)
		mm	mm	mm	mm	mm	mm
K2	SS188	106.4	131.6	20.6	54.6	31.8	8
	SS131	104.6	157.0	25.4	73.9	38.1	13.1
	SS102B	134.9	162.8	25.4	66.5	44.45	10.4
	S111	158.8	210.8	38.1	92.7	58.7	13.0
	SS110	134.8	170	25.4	75	44.45	10.4

F

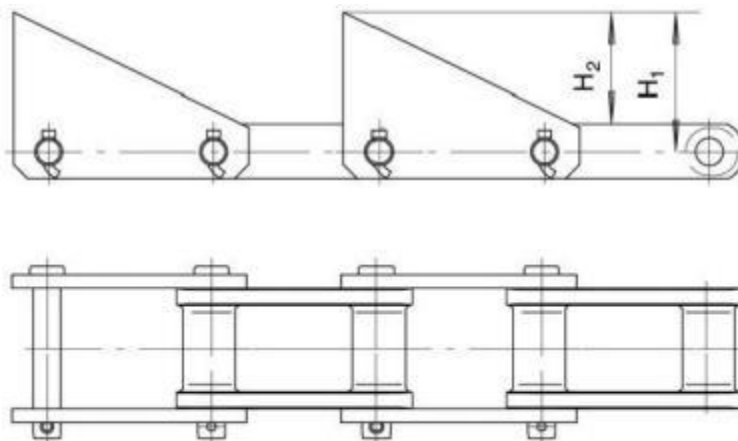


Att No	Chain No.	B	F	H1	H2	H3	H4	H5	E	E1	E2	d1	d2
		mm	mm	mm	mm	mm	mm	mm	mm	mm	mm	mm	mm
F	C09063	31.4	73.5	88.9	152.4	25.4	22.5	6.35	75	31.8	22.5	17.5	13.1

铸造糖机链及附件 Casting Type Sugar Mill Chains-Attachments



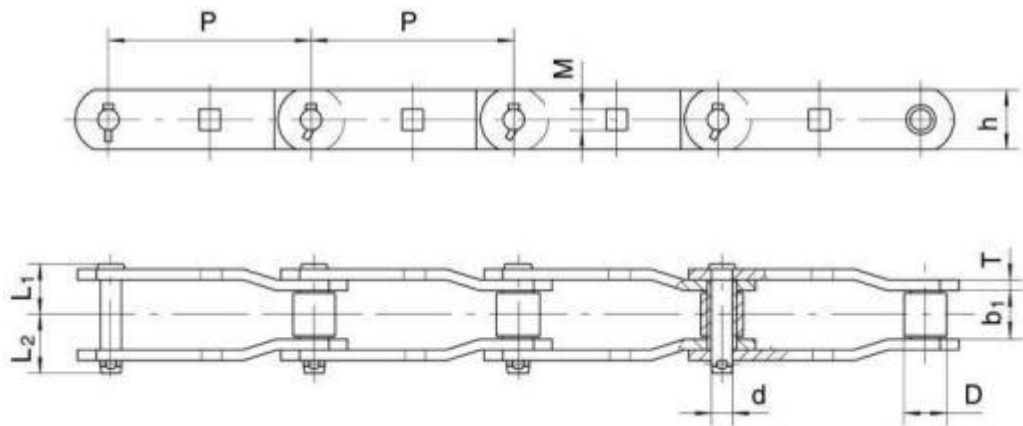
链号	节距	铸造链节				销轴			链板		最小抗拉强度	许用工作载荷	每米净重
Chain No.	Pitch	Casting link				Pin			Plate		Ultimate tensile strength	Rated working load	Weight per meter
		P	b, (min)	b2 (max)	D1 (max)	D2(max)	d	L	L2	h	T		Q (min)
	mm	mm	mm	mm	mm	mm	mm	mm	mm	mm	kN	kN	kg/m
C102B	101.6	44.45	72.14	25.4	30.18	15.88	52.5	58.6	38.1	9.5	122.2	18.7	11.16
C111	120.9	57.15	85.73	31.75	41.28	19.05	60.3	63.5	44.45	9.5	160	26.67	14.58
C110	152.4	44.45	73.03	36.5	36.53	15.88	53.5	57.63	38.1	9.5	122.2	18.7	9.67
C132	152.4	73	111.5	43.7	48.5	25.4	75	90	50.8	12.7	267	44.45	21.49



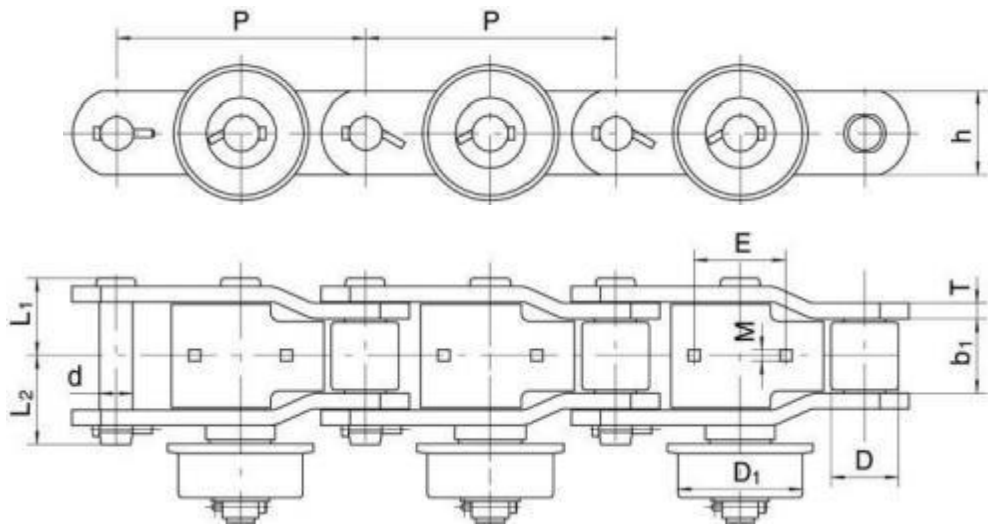
S1

Attachment No.	Chain No.	H,	H2
		mm	mm
S1	C102B	95.25	76.2
	C110	107.95	88.9
	C111	111.13	88.9
	C132	127	101.6

弯板型糖机链附件 Cranked Sidebar Type Sugar Mill Chains-Attachments

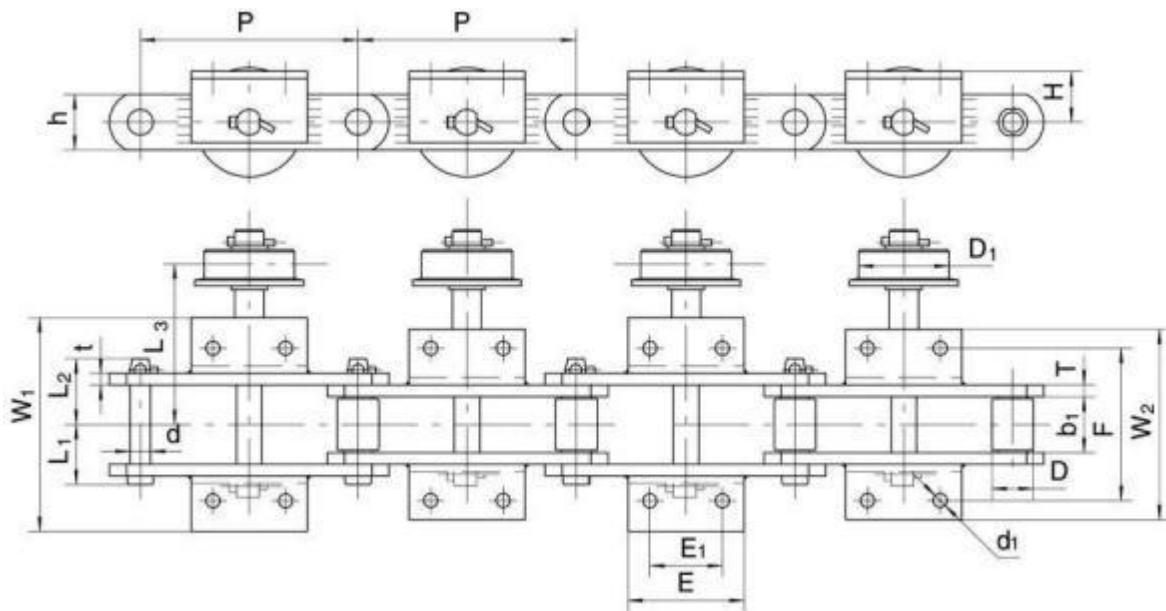


链号	节距	内节内宽	滚子外径	销轴			链板			最小抗拉强度	每米净重
Chain No.	Pitch	Width betwiiin sidebars	Roller diameter	Pin			Plate			Ultimate tensile strength	Weight per meter
	P	b, (min)	D(max)	d	L,	L2	h	T	M	Q(min)	q
	mm	mm	mm	mm	mm	mm	mm	mm	mm	kN	kg/m
C2614	304.8	69.85	63.5	31.75	78.5	84.5	88.9	15.9		1000	33.68



链号	节距	内节内宽	滚子外径	销轴			链板				最小抗拉强度	每米净重
Chain No.	Pitch	Width betwiiin sidebars	Roller diameter	Pin			Plate				Ultimate Tensile strength	Weight Per meter
	P	b, (min)	D(max)	d	L,	L2	h	T	M	E	Q(min)	q
	mm	mm	mm	mm	mm	mm	mm	mm	mm	mm	kN	kg/m
C2648	304.8	92.1	82.55	40.89	98	104.5	88.9	19.05	20.6	127	1350	105.6

外置滚轮式糖机链 Sugar Mill Chain with Side Roller



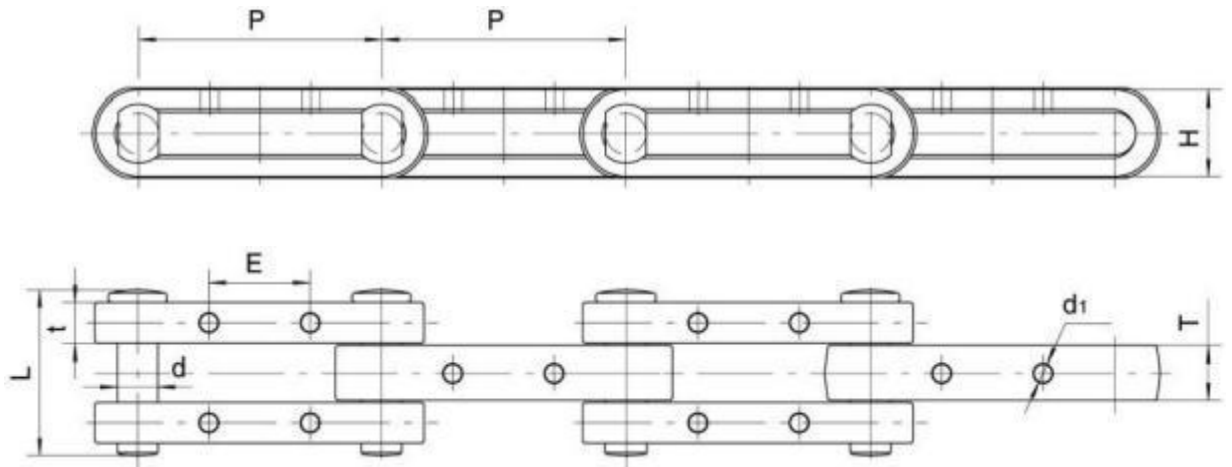
链号 Chain No.	节距 Pitch	内节内宽 Width between inner plates	滚子外径 Roller diameter		销轴 Pin			链板 Plate		最小抗拉强度 Ultimate Tensile strength
	P	b, (min)	D	D1	d	L,	L2	h	t/T	Fu (min)
	mm	mm	mm	mm	mm	mm	mm	mm	mm	kN
HR30054S	300	77	57.15	125	28	81.7	89	76.2	16	670
HR30055S	300	77	57.15	125	28	81.7	89	76.2	16	670

H	F	L3	W1	W2	E,	E	d,
mm	mm	mm	mm	mm	mm	mm	mm
70	210	219	293.4	259.5	100	160	19
70	210	219	394	259.5	100	160	16

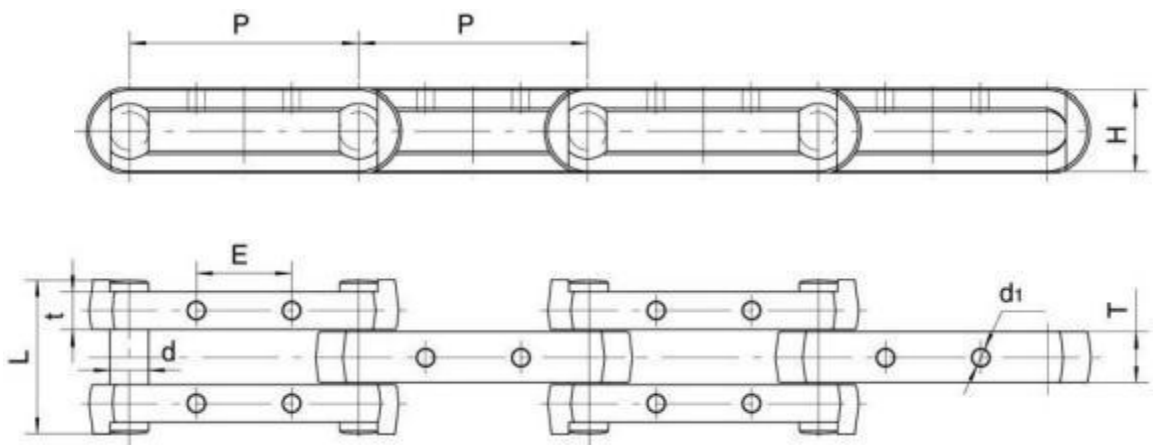
销轴与套筒有碳钢和 马氏体不锈钢两种材质 .

there are two kinds of materials for pin and bushing, which are Carbon steel and Martensite stainless steel.

○型锻造链 Loop Chain

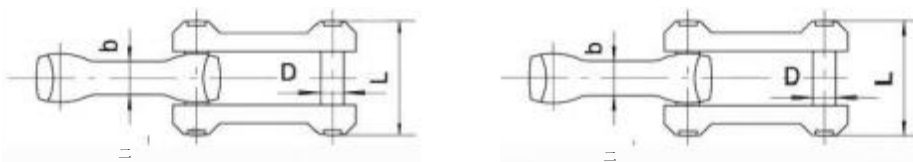


链号	节距	销轴		链板					最小抗拉强度	每米净重
Chain No.	Pitch	Pin		Sidebar					Ultimate tensile strength	Weight per meter
	p	d	L	H	t	T	d1	E	Q(min)	q
	mm	mm	mm	mm	mm	mm	mm	mm	kN	kg/m
DJ-215	152.4	39	158	77.8	38.1	50.8	17	76.2	1120	56.8
3850A	228.6	39	152	80	38	50	17	95	1000	32.05
3850B	228.6	39	132	80	40	50	17	95	1000	32.4
5075	228.6	39	201	83	50	75	17	95	1000	48.5



链号	节距	销轴		链板					最小抗拉强度	每米净重
Chain No	Pitch	Pin		Sidebar					Ultimate tensile strength	Weight per meter
	p	d	L	H	t	T	d1	E	Q(min)	q
	mm	mm	mm	mm	mm	mm	mm	mm	kN	kg/m
GPB152.4	152.4	30	153	63	38	50	16	76	900	34.1
KBJT152.4	152.4	39	158	72	38	50.8	17	50.8	1186.6	40.17
HG152.4	152.4	39	155	72	38	50.8	17	68	1186.6	39.95

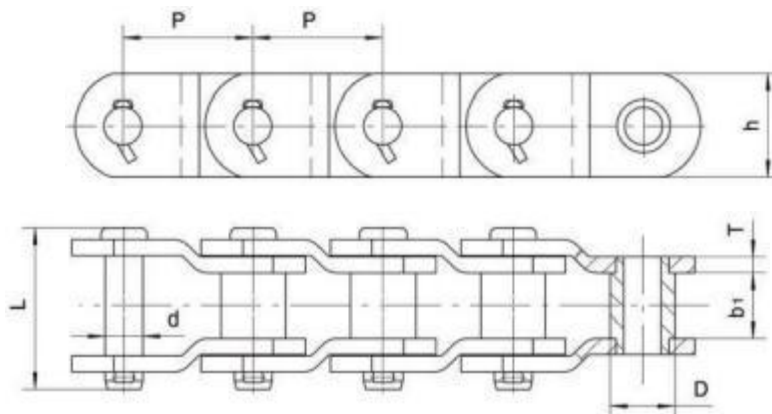
模锻易拆链 Drop forged Rivetless chains



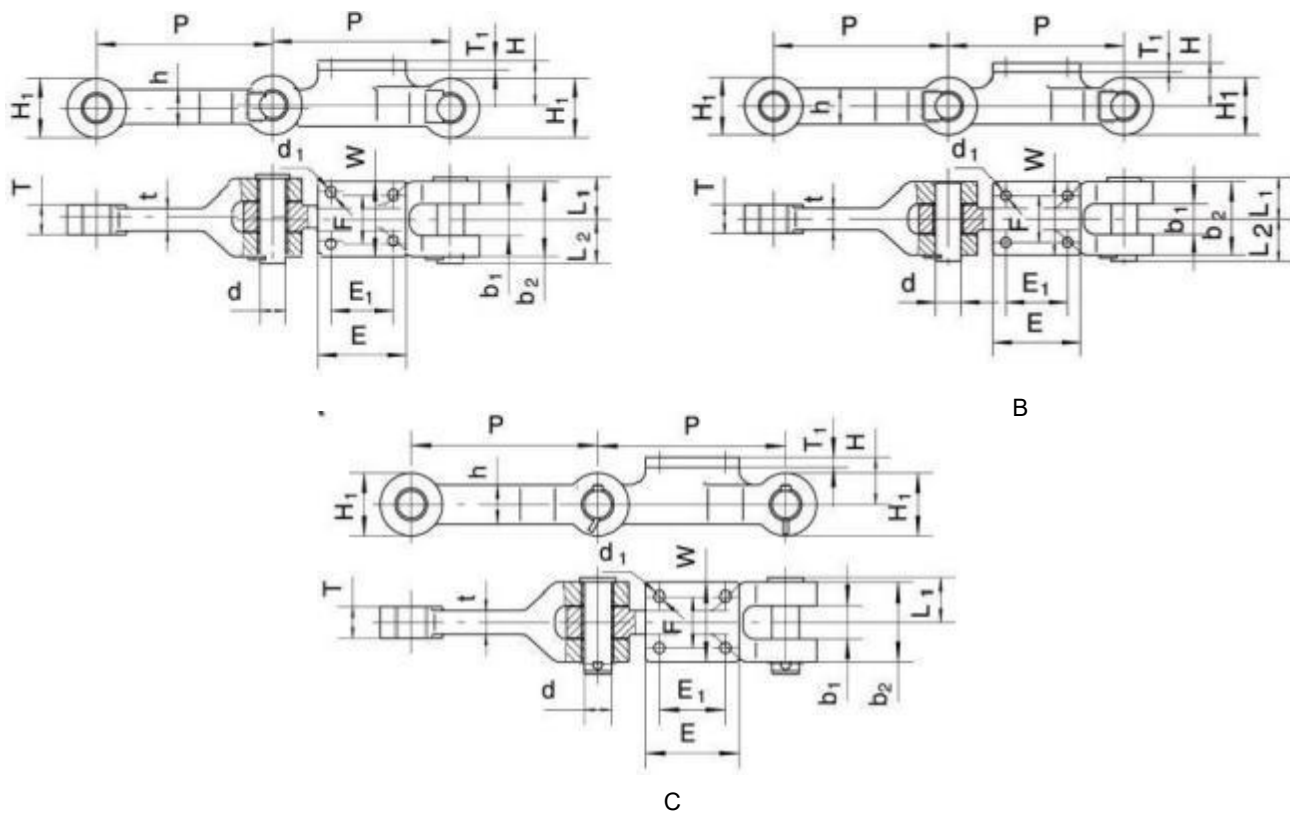
		I				I			
		P		P					
链号	节距	平均拉伸强度		销轴		链板			每米净重
Chain No.	Average pitch	Average ultimate strength		Pin		Sidebar			Average mass
		Not heat treated	Heat treated	Overall width L	Pin dia. D	Width of inner link b	Height H	Length of opening h	kg/m
X458	102.4	/	21800	55.7	16	25.2	35.7	17.3	4.35
X678	153.2	/	38500	77	22	31.8	50.8	25.4	3.03
468	102.4	17200	31800	81	19.1	28.6	47.6	22.2	3.1
678	153.2	18100	32700	77	22	20.6	50.8	25.4	3
698	153.2	45400	59000	95.3	28.6	25.4	68.3	31.8	18.1

重载传动用弯板套筒链

Heavy-Duty Cranked-Sidebar Transmission Bush Chains



链号	节距	窄端内宽	套筒外径	链板		销轴		最小抗拉强度	许用工作载荷	每米净重
Chain No.	Pitch	Inside width at narrow end	Bush diameter	Sidebars		Pin		Ultimate tensile strength	Rated working load	Weight Per meter
		b1 (min)	D (max)	h	T	d	L	Q (min)	kN	q
	mm	mm	mm	mm	mm	mm	mm	kN		kg/m
ZY850	152.4	57.15	50.8	82.6	16	33.27	157	634.7	45.3	36.6
ZY6066	152.4	75.8	76.2	120.7	19.05	44.45	184	1778	124.5	81.3
ZY886	177.8	68.33	66.68	101.6	19.05	41.07	172.2	1300	84.5	60.2



链号	节距	销轴				链板					最小抗拉强度
Chain No.	Pitch	Pin				Sidebar					Ultimate tensile strength
	p	d	L ₁	L ₂	Type	b ₁	b ₂	t	T	h	Fu(min)
	mm	mm	mm	mm		mm	mm	mm	mm	mm	mm
P200	200	38.5	52	58	A	42	92	20	40	75	622.3
P203.2	203.2	38.5	52	58	A	42	92	20.5	40	75	622.3
P228.6	228.6	32	51	69	B	48	102	35	45	50.8	500
P304.8A	304.8	44.5	70.5	75.5	A/C	54	127	38.1	50.8	63.5	880
P304.8B	304.8	44.5	63.5	81.5	B/C	54	127	38.1	50.8	63.5	880

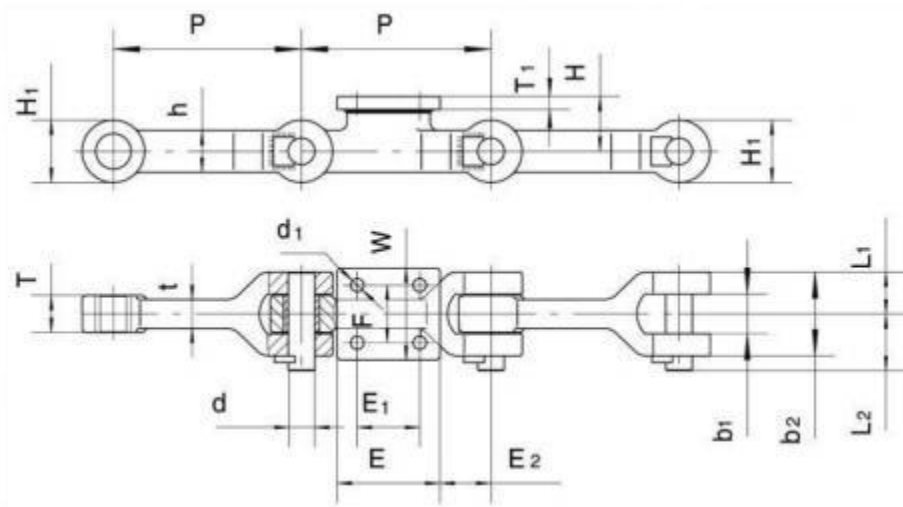
H	H ₁	F	W	T	E	E	d
mm	mm	mm	mm	mm	mm	mm	mm
81.5	75	56	92	16	50	100	17
81.5	75	56.2	92	16.5	50	100	17
66.8	76	70	112	16	76	125	16
76.2	101.6	82.6	127	16	108	152.5	17.5
76.2	101.6	82.6	127	16	108	152.4	17.5

销轴型号为A 的链节，两个节距孔内均有衬套，销轴型号为B 的链节，仅窄端节距孔内有衬套。

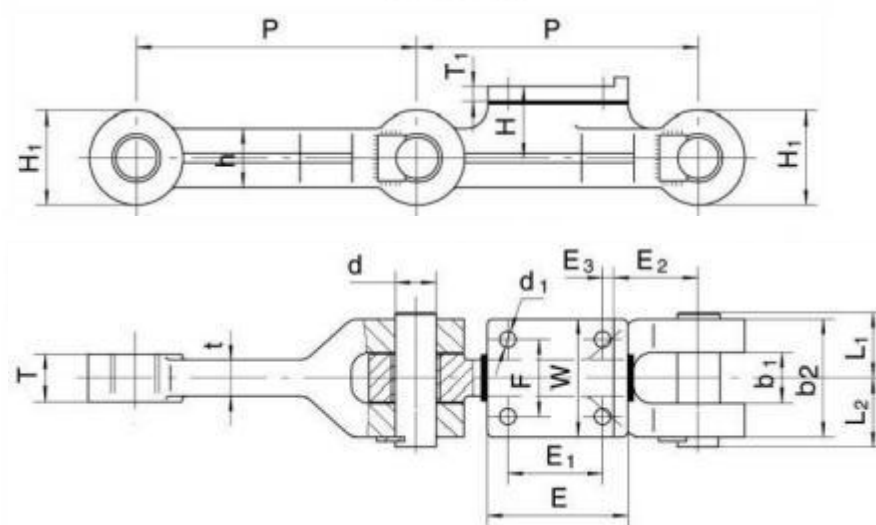
The link of type A pin:two pitch holes all have bush, and the link of type B pin:only narrow hole have bush.

锻造糖机链及附件 Forging Type Sugar Mill Chains-Attachments

ZY228.6



F1304.8



链号	节距	销轴			链板					最小抗拉强度
Chain No.	Pitch	Pin			Sidebar					Ultimate tensile strength
	p	d	L ₁	L ₂	b ₁	b ₂	t	T	h	Fu(min)
	mm	mm	mm	mm	mm	mm	mm	mm	mm	kN
ZY228.6	228.6	38	51.5	68.5	53	103	32	50.8	50.8	1350
F1304.8	304.8	44.5	73.5	81.5	54	127	45	50.8	70	1246.6

H	H ₁	F	W	T ₁	E	E ₁	E ₂	E ₃	d,
mm	mm	mm	mm	mm	mm	mm	mm	mm	mm
66.8	80	70	112	16	125	76	57.5	/	16
76	102	83	130	20	165	108	98	22.5	20

Tianjin OuNaiDa Transmissions Technology Co., Ltd

天津欧耐达传动科技有限公司



Product Catalog

ADD: No. 10 Tengwang Road, Beichen District, Tianjin 300401

Email: info@tjond.com

Website : <https://www.tjond.com>