



# Welded Steel Chain

Tianjin OuNaiDa Transmissions Technology Co., Ltd

**2026**

**Direct Manufacturer**

TEL: +(86) 022 83703208

Email: [info@tjond.com](mailto:info@tjond.com)

Website: [www.tjond.com](http://www.tjond.com)



Tianjin Ounaida Transmission Technology Co., Ltd. is a leading enterprise specializing in the R&D and manufacturing of high-performance industrial transmission components. Located in a modern industrial park, the company operates a 9,000-square-meter standardized manufacturing facility dedicated to providing

precise and reliable transmission solutions for the global industrial sector. The company has invested heavily in a full suite of high-precision gear and rack processing equipment and high-end CNC machinery, establishing a complete production chain from raw material processing to precision finishing. To ensure the physical accuracy of every component, we utilize cutting-edge Coordinate Measuring Machines (CMM). Operating under the rigorous ISO 9001:2015 quality management system, we guarantee that our products meet the highest industry standards. With over 20 years of profound technical expertise, Ounaida's primary business includes: Precision Gears and Racks, Linear Guides and Blocks, Ball Screws, Various Precision Transmission Components, Non-standard Custom Parts tailored for specialized industrial conditions. Innovation is our core competitiveness. Our in-house R&D team brings together a group of highly experienced senior engineers and skilled frontline technicians. From initial conceptual design and mechanical analysis to final production, our team provides professional perspectives to optimize transmission efficiency and reduce maintenance costs for our clients.



## Comprehensive Industrial Transmission Solutions

We offer a comprehensive range of industrial transmission solutions. Our primary product line includes high-precision gears, racks, timing pulleys, sprockets, roller chains, ball screws, linear guides, linear modules, and other related transmission components.

### 1. CNC Machining & Assembly

Utilizing advanced CNC machining centers, we provide deep customization services ranging from single-part precision machining to complex component assembly. We ensure micron-level accuracy to meet the most demanding requirements for high-difficulty and non-standard parts.

### 2. Customized Gearbox Solutions

We specialize in the R&D and customization of various industrial gearboxes. Our one-stop power transmission services cover everything from structural design and gear ratio optimization to final assembly, ensuring high efficiency and stable performance under the most complex operating conditions.

## Professional Production Team:

Providing Integrated Design, Drafting, and Manufacturing Services, ensuring the flawless execution of every solution.



## Professional Sale Team:

Providing 24hours online service, accurate product quotations, and order tracking services.



## Professional Technical Team:

Provides professional solutions, help maintenance customers reduce costs and improve operational efficiency.

## Professional After-sale Team:

Comprehensive after-sales support eliminates your worries.

# Advanced Equipments



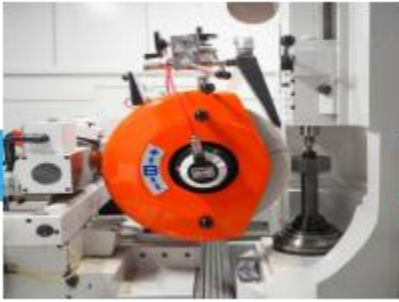
CNC Gear Hobbing



CNC Cylindrical Grinding



CNC Machine Center



CNC Gear Grinding



CNC Gear Chamfering



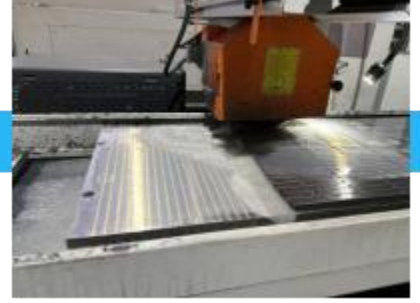
Milling and Turning



CNC Gear Rack Milling



CNC Gear Rack Grinding



CNC Surface Grinder



CNC Rack Chamfering

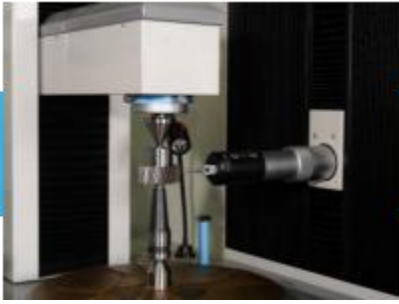


Rack End-Face Milling



CNC Cleaning Machine

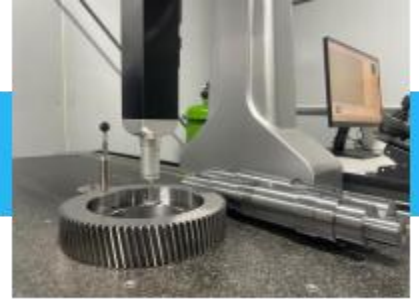
## Test machines



CNC Gear Test Center



Pre-stretching and Running-in

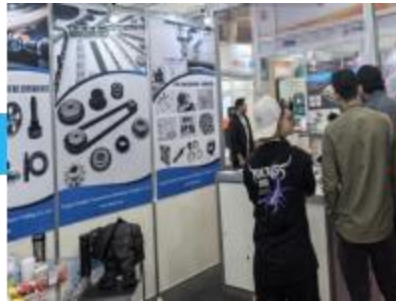


CMM

## Exhibitions



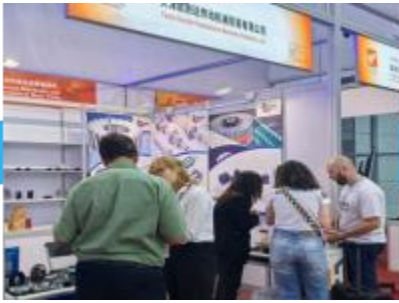
Poland



Brazil



Russia



Canton Fair



Türkiye



Thailand



## ISO 9001:2015

Through standardized production management and rigorous quality monitoring processes, we ensure that every stage—from design and raw material procurement to final delivery—strictly complies with international quality standards. We are committed to continuous improvement, providing our clients with high-performance industrial solutions characterized by exceptional stability and excellence.

## CE Marking

Our products fully comply with EU CE certification standards, reflecting our adherence to mandatory EU requirements for safety, health, and environmental protection. The CE mark serves not only as a gateway to the international market but also as our solemn commitment to product safety and reliability, ensuring global applicability.

## RoHS Compliance

The company strictly adheres to the RoHS environmental directive, implementing rigorous controls over hazardous substances such as lead, mercury, and cadmium throughout the manufacturing process. We are committed to green manufacturing, ensuring all transmission components are safe, eco-friendly, and non-toxic. By meeting international green trade standards, we actively fulfill our social responsibility for environmental protection while pursuing high-efficiency industrial production.



## Intelligent Manufacturing

Utilize standardized operational procedures (SOPs) to ensure high efficiency and exceptional stability throughout the manufacturing process



## Full- Process Monitoring & Management

From raw material procurement to final product dispatch, we implement a comprehensive digital monitoring system. This ensures that every manufacturing stage adheres strictly to rigorous international quality standards.



### Technical Assurance

Our senior technical team focuses on process innovation and solving complex technical challenges, providing a solid foundation for the high-precision manufacturing of every product.



### Quality Traceability

We have established a comprehensive quality inspection archive and an after-sales traceability system. This ensures that every product leaving our facility is fully documented and verifiable, providing our clients with absolute peace of mind regarding quality.



### Instant Response

We have established an efficient customer communication and feedback mechanism to ensure that all inquiries and technical consultations receive a prompt, first-time response.



### Tailored Solutions

We provide flexible, customized design services, optimizing solutions based on customer blueprints or specific operational requirements to precisely transform product concepts into reality.

## Global Reach · Boundless Connectivity

With a logistics network spanning over 200 countries, we maintain deep partnerships with major global airlines and ports to ensure seamless, reliable transshipment worldwide.



## Ultimate Speed · Punctual Delivery

By optimizing route planning and multimodal transport paths, we significantly shorten cross-border transit cycles and ensure highly controllable delivery timelines.



## Competitive Freight · High Cost-Efficiency

Leveraging our large-scale transportation volume and direct first-hand booking channels, we eliminate middleman markups. This allows us to provide highly competitive freight solutions that significantly reduce your total integrated logistics costs.



## Efficient Flow · Rapid Clearance

Our professional customs teams are stationed at core logistics hubs, deeply familiar with international customs policies and compliance procedures. By providing pre-clearance services, we drastically accelerate processing speeds and minimize inspection risks.



## Full Visibility · Worry-Free After-Sales

By integrating an advanced digital logistics tracking system, we provide real-time updates on shipment status. Additionally, we assign a dedicated account manager to each client, offering one-stop, full-process consultation and after-sales assurance from order placement to final delivery.



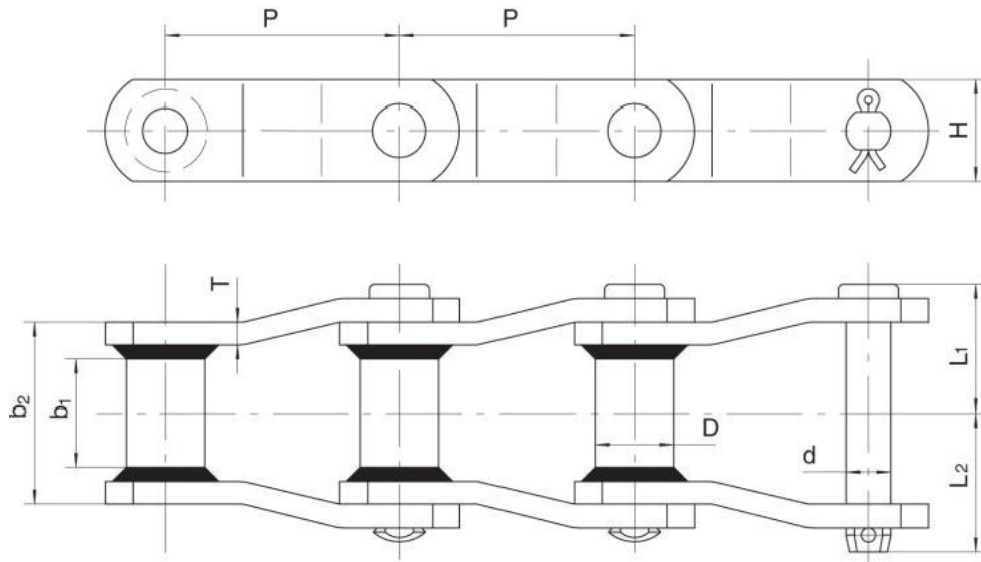
## Professional Packaging · Zero-Damage

We provide both standardized and customized reinforced packaging services. Utilizing high-strength anti-collision and shock-absorbing materials, we implement specialized reinforcement for precision products to ensure the total safety of your cargo throughout the entire journey.



窄系列焊接弯板链

Narrow Series Welded Crank-Link Mill Chains



链号 Chain No.	节距 Pitch P	窄端 Narrow end		套筒外径 Bush diameter D (max)	链板 Sidebars		销轴 Pin			最小抗 拉强度 Ultimate tensile strength Fu (min) kN	许用工 作载荷 Rated working load kN	每米重量 Weight per meter q kg/m
		b, (min) mm	b <sub>2</sub> (max) mm		h mm	T mm	d mm	L, mm	L <sub>2</sub> mm			
WR78	66.27	28.4	51	22.23	28.6	6.4	12.7	36.3	39.5	106.8	10.5	5.94
DWR78	66.27	28.4	51	21.4	31.8	6.4	12.7	36.3	39.5	125	12.1	6.42
WR78B	66.27	28.4	51	27	31.8	6.4	12.7	36.3	39.5	125	12.1	7.03
WSR78	66.27	20	41.3	21.3	25.4	6.4	12.7	31.5	34.6	85.3	8.3	5.21
WR78HD	66.95	25.4	51.2	25.4	31.8	9.5	14.27	40.2	45.3	133.4	14.7	9.41
WR82	78.1	31.8	57.4	25.4	31.8	6.4	14.27	40	43.5	133.4	14.7	6.83
*WR82SS	78.1	31.8	57.4	25.4	31.8	6.4	14.27	40	43.5	133.4	14.7	6.83
WR82HD	78.1	28.6	60.8	31.75	38.1	9.5	19.05	46.5	50.8	215	20.5	12.71
WR124	101.6	38.1	71.5	31.8	38.1	9.5	19.05	52	56	204	20.5	11.52
WR124HD	103.2	38.1	76.3	41.28	50.8	12.7	25.4	59.4	64.3	378	46.5	21.33
WR111	120.9	50.8	85.6	31.8	44.5	9.5	19.05	59.4	63.3	270	32.5	13.05
WR106	152.4	38.1	71.5	31.8	38.1	9.5	19.05	52	56	204	20.5	9.65
WR110	152.4	44.5	76.5	31.8	38.1	9.5	19.05	54.4	59.6	204	20.5	9.57
WR132	153.67	69.85	111.6	44.5	50.8	12.7	25.4	77.3	81.7	345	42.5	21.08
WR150	153.67	69.85	111.6	44.5	63.5	12.7	25.4	77.3	81.7	345	42.5	24.93

带“\*”材质为不锈钢

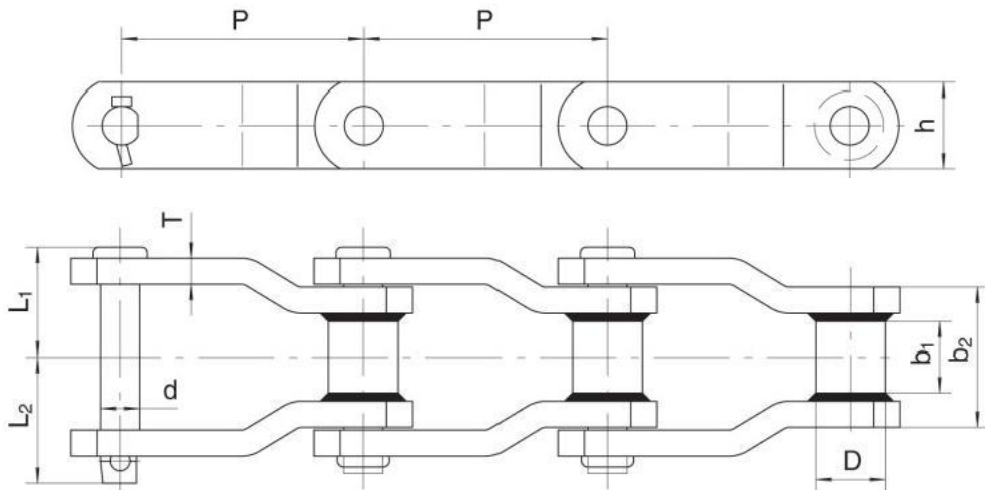
With\*\* means stainless steel material.

链条销轴经过热处理硬化，链板和套筒不热处理

All pins of chain have been hardened through heat treatment. Sidebar and bush have not been heat treated!

窄系列焊接弯板链

Narrow Series Welded Crank-Link Mill Chains



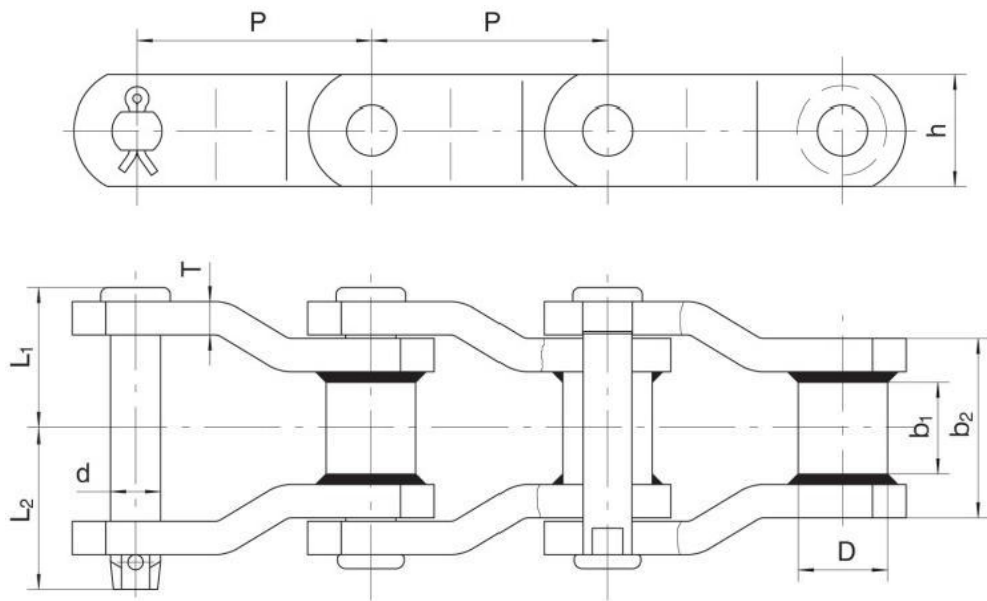
链号 Chain No.	节距 Pitch P	窄端 Narrow end		套筒外径 Bush diameter D(max)	链板 Sidebars		销轴 Pin			最小抗拉强度 Ultimate tensile strength Fu(min)	许用工作载荷 Rated working load kN	每米重量 Weight per meter q
		b, (min)	b <sub>2</sub> (max)		h	T	d	L, mm	L <sub>2</sub> mm			
WH78	66.27	28.4	51	22.23	28.6	6.4	12.7	36.3	39.5	160	15.6	5.92
WH78B	66.27	28.4	51	27	31.8	6.4	12.7	36.3	39.5	160	15.6	6.98
WH78HD	66.95	25.4	51.2	25.4	31.8	9.5	14.27	40.2	45.3	200	19.6	9.4
WH82	78.1	31.8	57.4	27	31.8	6.4	14.27	40	43.5	200	19.6	7.14
WH82HD	78.1	28.6	60.8	31.75	38.1	9.5	19.05	46.5	50.8	320	32.7	12.7
WH9103HD	78.1	28.6	57.9	31.75	38.1	9.5	18.95	43.5	48.4	320	32.9	11.9
WH124	101.6	38.1	71.5	31.8	38.1	9.5	19.05	52	56	320	32.7	11.5
WH124HD	103.2	38.1	76.3	41.28	50.8	12.7	25.4	59.4	64.3	540	66.8	21.3
WH111	120.9	50.8	85.6	31.8	44.5	9.5	19.05	59.4	63.3	320	39.5	13
WH720	152.4	28.5	55	32	40	10	19.05	44.5	49.5	350	35.8	9.7
WH106	152.4	38.1	71.5	31.8	38.1	9.5	19.05	52	56	320	32.7	9.6
WH110	152.4	44.5	76.5	31.8	38.1	9.5	19.05	54.4	59.6	320	32.7	9.6
WH132HD	153.67	69.85	119.03	44.5	50.8	15.9	25.4	84	89.7	540	69.3	24.8

所有零件经过热处理硬化

All components of chain have been hardened through heat treatment.

## 窄系列焊接弯板链

## Narrow Series Welded Crank-Link Mill Chains

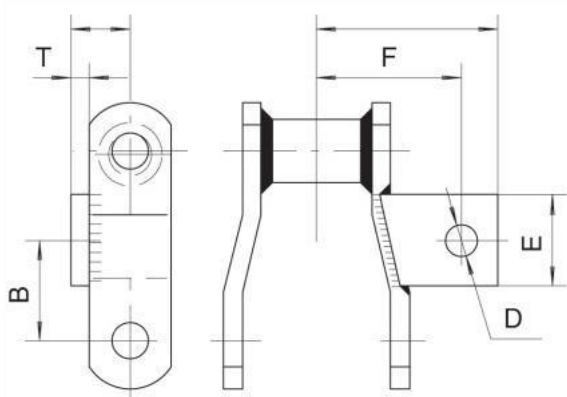


链号 Chain No.	节距 Pitch P mm	窄端 Narrow end		套筒外径 Bush diameter D(max) mm	链板 Sidebars		销轴 Pin			最小抗 拉强度 Ultimate tensile strength Fu (min) kN	许用工 作载荷 Rated working load kN	每米 重量 weight per meter q kg/m
		b <sub>1</sub>	b <sub>2</sub>		h mm	T mm	d mm	L mm	L <sub>2</sub> mm			
		(min) mm	(max) mm									
WHX124	101.6	38.1	71.5	36.55	38.1	9.5	19.05	51.8	56.2	320	32.7	12.5
WHX124HD	103.2	38.1	76.3	41.28	50.8	12.7	25.4	59.4	64.3	540	66.8	20.7
WHX111	120.9	50.8	85.6	36.55	38.1	9.5	19.05	58.7	64.5	320	39.5	12.5
WHX111HD	120.9	57.15	91.96	36.53	50.8	12.7	19.05	65.5	69.5	320	39.5	19.1
WHX132	153.67	69.85	111.6	44.5	50.8	12.7	25.4	77.3	81.7	540	66.8	20.4
WHX132HD	153.67	69.85	119.03	44.5	50.8	15.9	25.4	84	89.7	540	69.3	24.8
WHX106	152.4	38.1	71.5	36.55	38.1	9.5	19.05	51.8	56.2	320	32.7	9.7
<b>WHX150</b>	153.67	69.85	111.6	44.5	63.5	12.7	25.4	77.3	81.7	540	66.8	24.5
<b>FWHX150</b>	<b>153.67</b>	69.85	110	44.5	65	12	25	75	81	520	64.5	24.7
<b>WHX155</b>	<b>153.67</b>	<b>69.85</b>	112.1	44.5	<b>63.5</b>	14.3	28.4	77.4	87.5	660	77.8	27.7
<b>WHX157</b>	<b>153.67</b>	69.85	118.1	44.5	63.5	15.9	28.55	81.4	92.6	750	80.9	29.3
<b>WHX159</b>	155.58	73	118.1	50.8	<b>76.2</b>	15.9	31.5	83	84.8	930	90	38.4
<b>WHX4855</b>	304.8	69.85	116.9	44.5	63.5	15.9	31.55	81.8	84.3	780	76.8	22.5
<b>WHX4859</b>	304.8	73	118.1	50.8	76.2	15.9	31.5	83	84.8	930	87.5	28.9

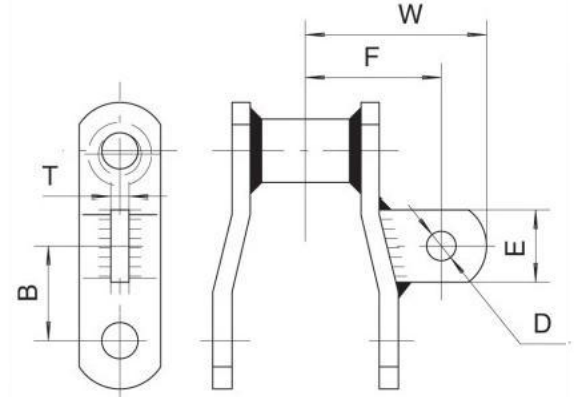
所有零件经过热处理硬化，销轴表面感应硬化处理

All components of chain have been hardened through heat treatment and pin has been surface induction hardened.

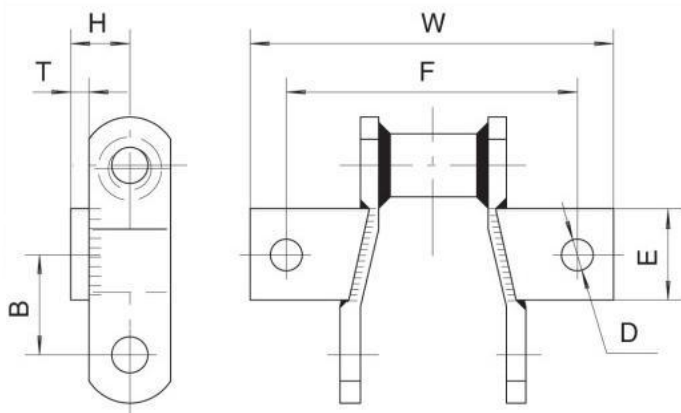
系列焊接弯板链附件 Narrow Series Welded Crank-Link Mill Chains-Attachments



**A1**

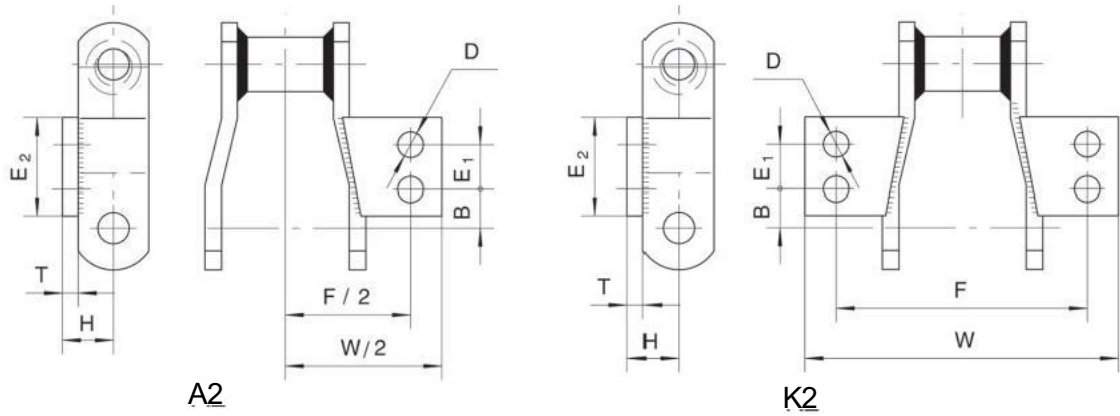


**A22**

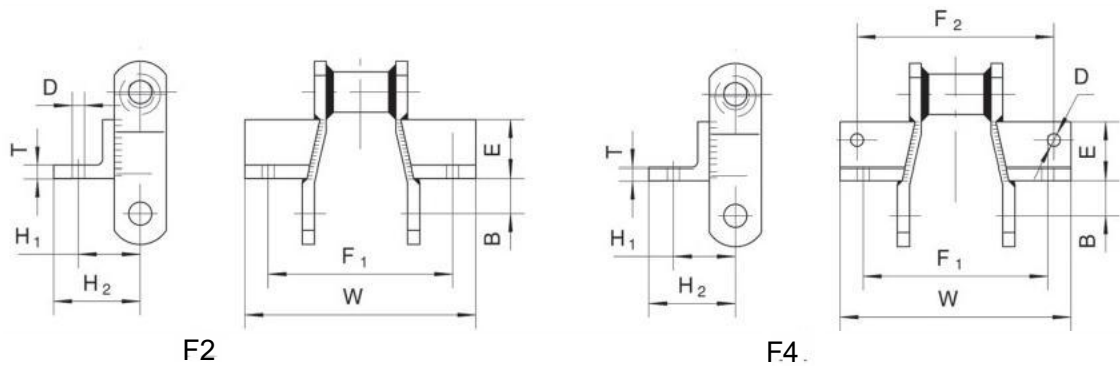


**K1**

链号 Chain No.	B mm	D mm	E mm	F mm	H mm	W mm	T mm
A1							
WH78	31.75	10.4	31.75	50.8	20.7	63.5	6.4
WH82	38.1	10.4	44.45	53.1	22.3	69.85	6.4
A22							
WH78	33.3	10.4	25.4	47.8	/	63.5	9.5
WH124	50.8	11	38.1	75	/	95	9
K1							
WH78	31.75	10.4	31.75	101.6	20.7	127	6.4
WH82	38.1	10.4	44.45	106.2	22.3	139.7	6.4

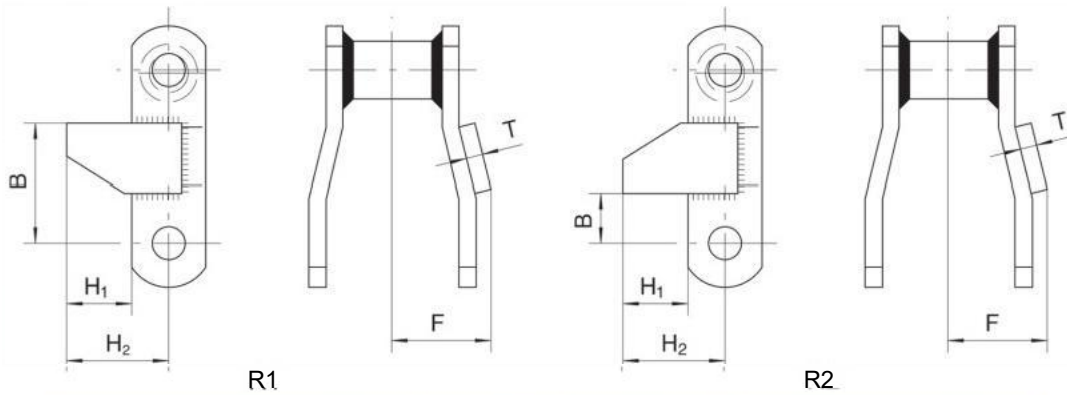


链号 Chain No.	B mm	D mm	E, mm	E <sub>2</sub> mm	F mm	H mm	W mm	T mm
A2、K2								
WH78	10.4	10.4	28.7	50.8	101.6	20.7	127	6.4
WH82	19.05	10.4	33.3	57.15	108.2	22.3	136.6	6.4
WHX124	22.4	10.4	49.3	76.2	133.6	28.6	162	9.5
WHX132	41.4	14.3	69.85	108	190.5	38.1	233.2	12.7
WHX150	41.4	14.3	69.85	106.5	190.5	44.45	233.2	12.7
WHX155	41.4	14.3	69.85	106.5	190.5	46	233.2	14.3
WHX157	44.45	14.3	63.5	101.6	203.2	47.75	242.8	16

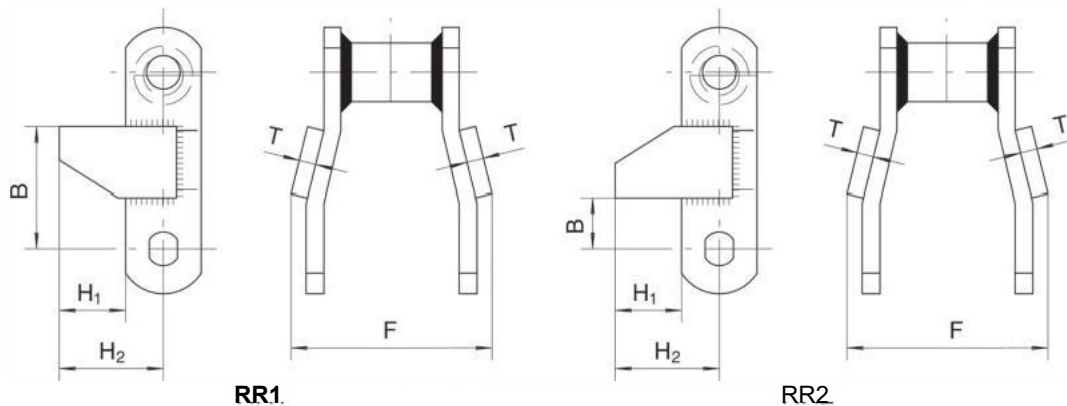


链号 Chain No.	B mm	D mm	E mm	F <sub>1</sub> mm	F <sub>2</sub> mm	H <sub>1</sub> mm	H <sub>2</sub> mm	T mm	W mm
F2									
WH78	14.23	10.4	31.75	95.25	/	36.58	58.67	6.4	119
F4									
WH78	17.53	10.4	31.75	95.25	114.3	44.45	58.67	6.4	139.7
WH82	20.57	10.4	28.7	104.9	127	45.97	60.45	6.4	150.9
WHX124	22.35	10.4	36.07	111.25	133.35	52.32	77.72	9.5	157.2

## 窄系列焊接弯板链附件 Narrow Series Welded Crank-Link Mill Chains-Attachments

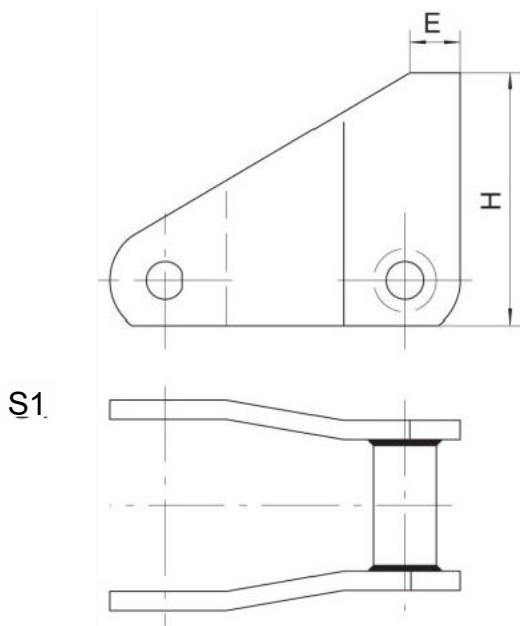


链号 Chain No.	B mm	F mm	H <sub>1</sub> mm	H <sub>2</sub> mm	T mm
R1					
WH78	47.75	38.1	25.4	39.7	6.4
WH82	55.4	41.4	31.85	47.75	6.4
WHX124	69.1	54.9	28.7	47.75	9.5
R2					
WH78	17.5	38.1	25.4	39.7	6.4
WH82	22.4	41.4	31.85	47.75	6.4
WHX124	31.75	54.9	28.7	47.75	9.5

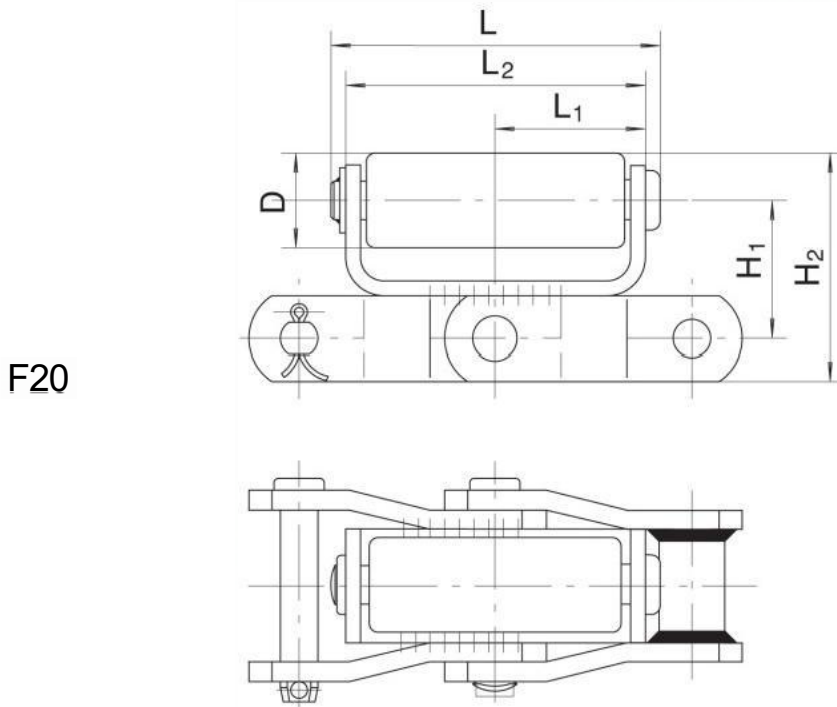


链号 Chain No.	B mm	F mm	H <sub>1</sub> mm	H <sub>2</sub> mm	T mm
RR1					
WH78	47.75	76.2	25.4	39.7	6.4
WH82	55.4	82.8	31.85	47.75	6.4
WHX124	69.1	109.8	28.7	47.75	9.5
RR2					
WH78	17.5	76.2	25.4	39.7	6.4
WH82	22.4	82.8	31.85	47.75	6.4
WHX124	31.75	109.8	28.7	47.75	9.5

窄系列焊接弯板链附件 Narrow Series Welded Crank-Link Mill Chains-Attachments



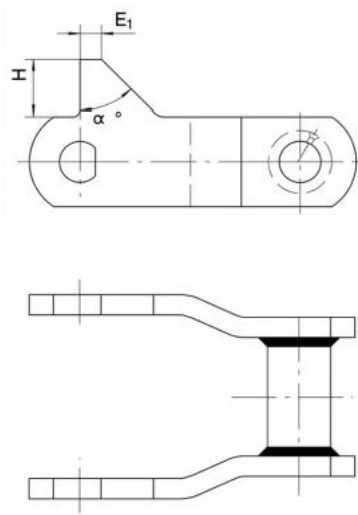
链号 Chain No.	E mm	H mm
S1		
WH111	25.4	127
WH132	25.4	152.4
WHX157	33.35	127



链号 Chain No.	D mm	H <sub>1</sub> mm	H <sub>2</sub> mm	L mm	L <sub>1</sub> mm	L <sub>2</sub> mm
F20						
DWR78	32	46.6	78.5	121	55.5	111

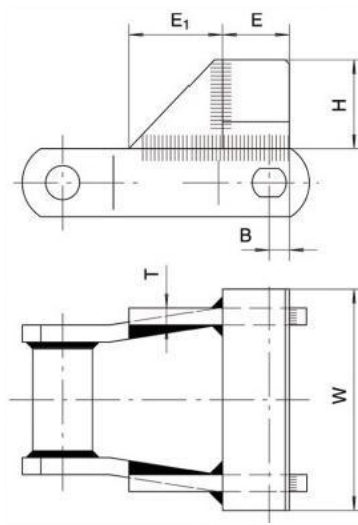
窄系列焊接弯板链附件 Narrow Series Welded Crank-Link Mill Chains-Attachments

RR2



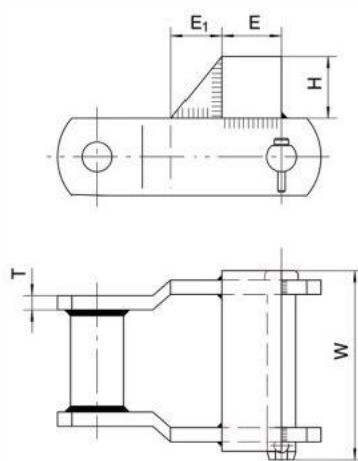
链号 Chain No.	E, mm	H mm	$\alpha$ mm
RR2			
WHX155	15	40	45
WH150	8	25.5	45

RFA



链号 Chain No.	B mm	E mm	E1 mm	H mm	T mm	W mm
RFA						
WH132	15	50	69	66.2	12	165
WHX155	18	50	42	52	12	152

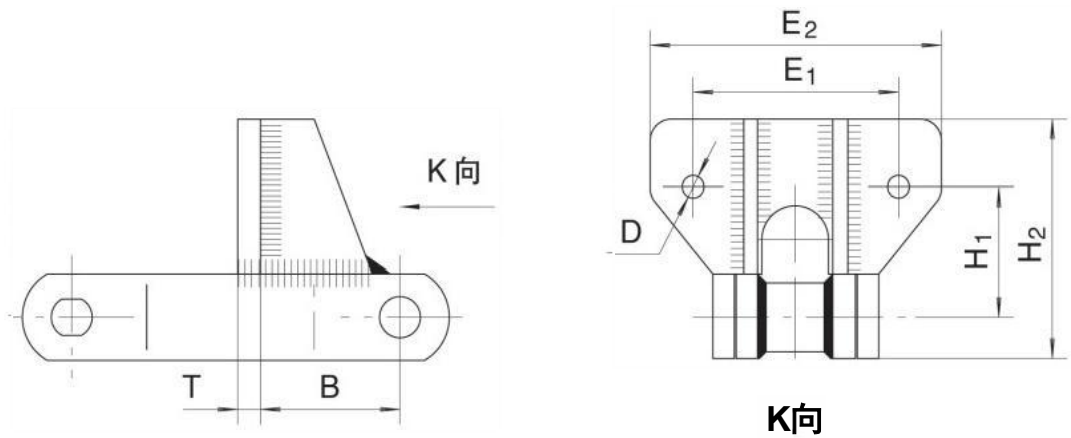
RFB



链号 Chain No.	E mm	E, mm	H mm	T mm	W mm
RFB					
FWHX150	50	42	52	12	152
WH124	40	30	40	6	90

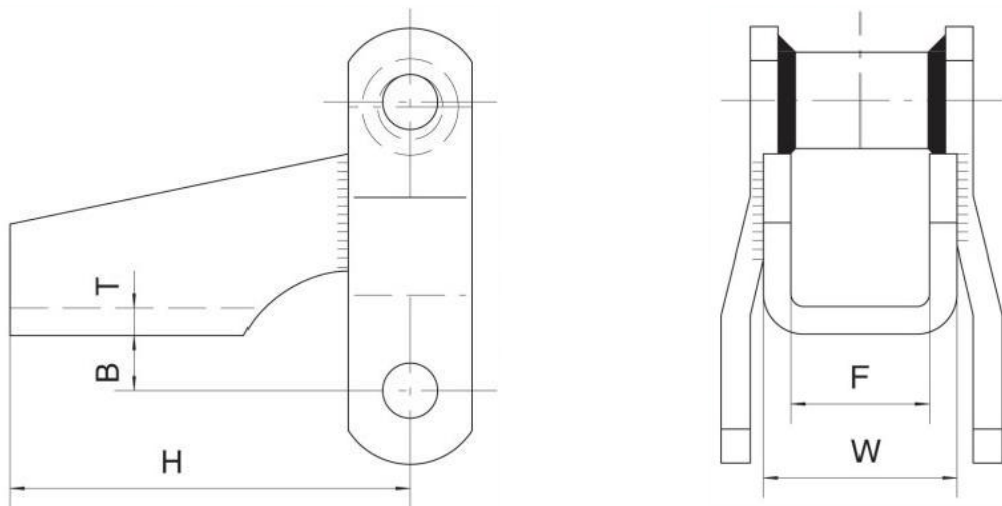
窄系列焊接弯板链附件 Narrow Series Welded Crank-Link Mill Chains-Attachments

F226



链号 Chain No.	H <sub>1</sub> mm	H <sub>2</sub> mm	E <sub>1</sub> mm	E <sub>2</sub> mm	D mm	B mm	T mm
F226							
WH720S	60	110	95	135	10	66	10

H1

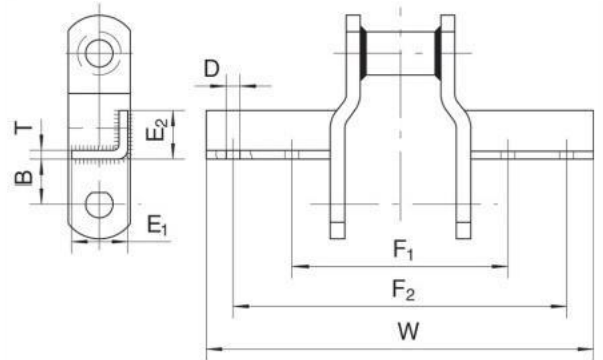
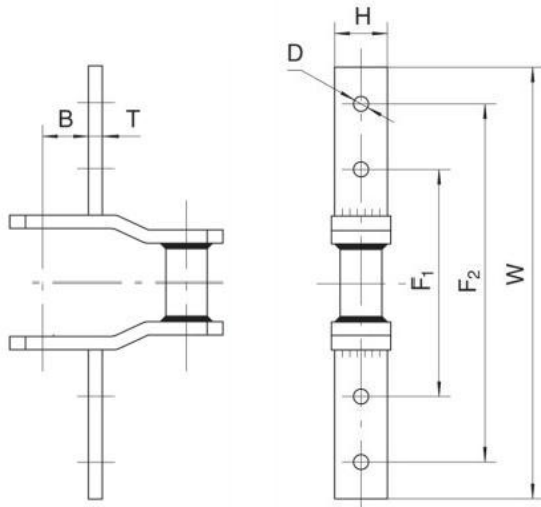


链号 Chain No.	B mm	F mm	H mm	T mm	W mm
H <sub>1</sub>					
WH78	12.7	31.7	92.2	6.4	44.5
WH82	16	38	92.2	6.4	50.8

窄系列焊接弯板链附件 Narrow Series Welded Crank-Link Mill Chains-Attachments

BH2附件 BH2 Attachment

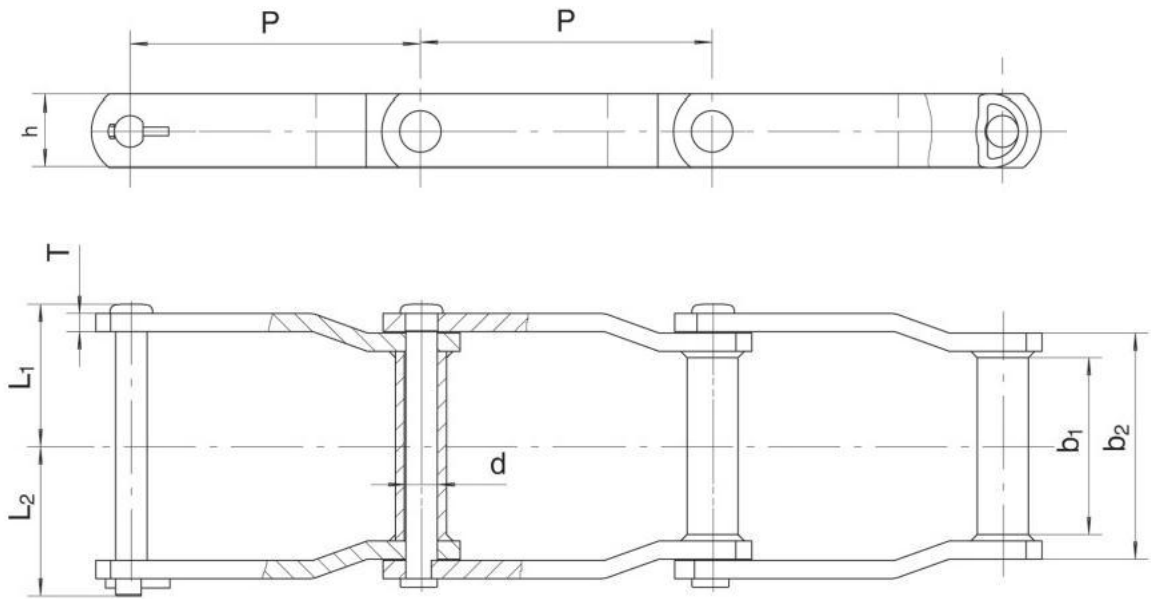
BF2附件 BF2 Attachment



链号 Chain No.	H mm	F <sub>1</sub> mm	F <sub>2</sub> mm	W mm	D mm	B mm	T mm
BH2							
WH78	28	120	200	230	9	15	8
WH82	31.8	130	180	220	10	17	6
WH124	38.1	145	315	376	11	46	9.5
	38.1	170	347	387	12	31.8	10
WH111	44.5	206.8	336.8	386.8	13	20	12
	44.5	206.8	426.8	506.8	18	20	14
WH132	50.8	219.4	370	450	14	77.3	12.7
	50.8	200	619.1	665	14.3	50.8	14
WHX155	50	203.1	593.1	660	13	50	12
WHX157	63.5	270	450	530	18	32	16
	63.5	310	570	700	18	32	16

链号 Chain No.	E <sub>1</sub> mm	E <sub>2</sub> mm	F <sub>1</sub> mm	F <sub>2</sub> mm	W mm	D mm	B mm	T mm
BF2								
WH124	38.1	38.1	154.3	322.3	376.3	12	31.8	6
	38.1	38.1	154.3	627.3	681.3	12	31.8	6
WH111	45	45	206.8	606.8	706.8	13	86	6
WH132	50	50	218	458.7	538.7	14	50	6
	75	50	221	736	816	16	40	8
WH150	50	50	240	520	590	13	73.67	5
	50.8	50.8	200	590	652.5	14.3	50.8	6
WHX155	50	75	260	720	790	13	73.67	6
WHX157	63.5	63.5	220	395	455	14.3	45	10
	63	63	280	760	890	18	106	8

# 宽系列焊接弯板链 Wide Series Welded Crank-Link Mill Chains

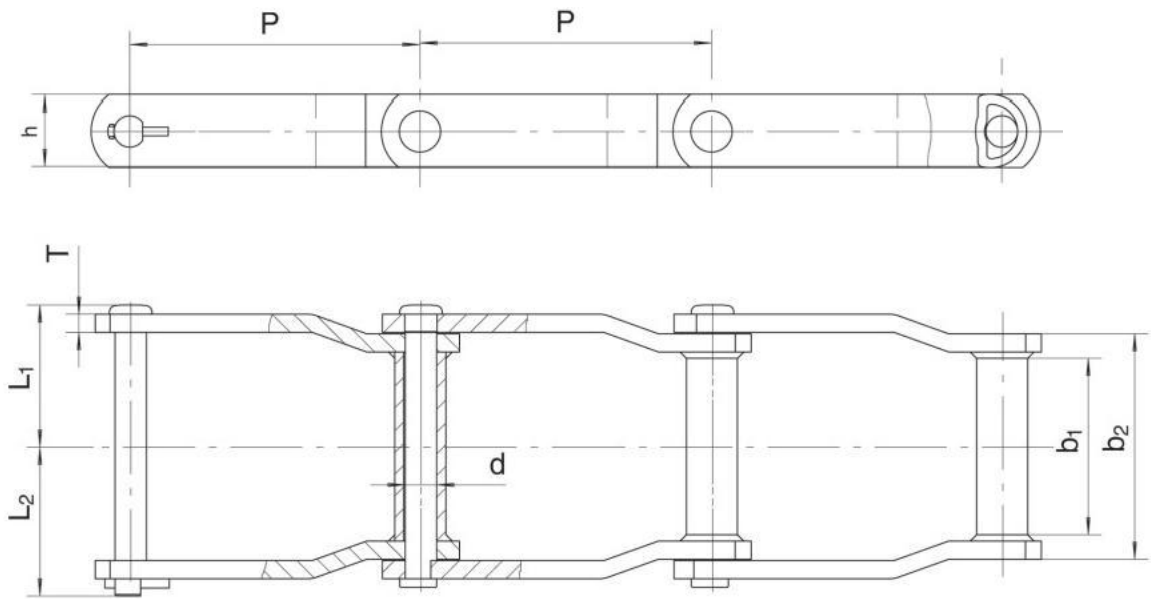


链号 Chain No.	节距 Pitch	窄端 Narrow end		链板 Sidebars		销轴 Pin			最小抗拉 强度 Ultimate tensile strength	许用工 作载 荷 Rated working load	每米 重量 Weight per meter
	P mm	b, (min) mm	b <sub>2</sub> max) mm	h mm	T mm	d mm	L, mm	L <sub>2</sub> mm	Fu(min) kN	kN	q kg/m
WDR104	152.4	104.6	136.9	38.1	9.5	19.05	84.2	91	204	28.5	12
WDR110	152.4	228.6	263.9	38.1	9.5	19.05	147.8	154.5	204	28.5	17
WDR120	152.4	222.2	260.4	50.8	12.7	22.23	150.5	157	390	48	28.7
WDR112	203.2	228.6	263.9	38.1	9.5	19.05	147.8	154.5	204	28.5	14.1
WDR116	203.2	325.8	358.7	44.5	9.5	19.05	195.4	201.8	262	36.5	18.8
WDR118	203.2	334	378.45	50.8	12.7	22.23	210.7	217.2	390	48	32.1
WDR480	203.2	282.4	324.1	50.8	12.7	22.23	182.2	188.7	390	48	26.9
WDR2210	155.85	228.6	263.9	38.1	9.5	19.05	147.8	154.5	204	28.5	16.7
WDR2380	207.29	282.4	324.1	50.8	12.7	22.23	182.2	188.7	390	48	26.6

链条销轴经过热处理硬化

All pins of chain have been hardened through heat treatment.

# 宽系列焊接弯板链 Wide Series Welded Crank-Link Mill Chains

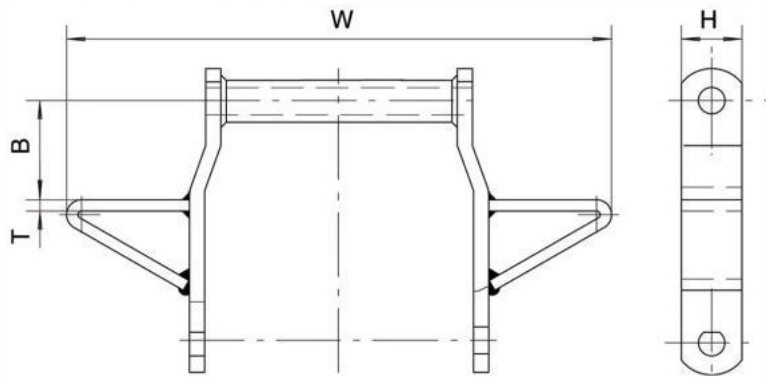


链号 Chain No.	节距 Pitch P	窄端 Narrow end		链板 Sidebars		销轴 Pin			最小抗拉 强度 Ultimate tensile strength	许用工 作载荷 Rated working load	每米 重量 Weight per meter
		b, (min) mm	b <sub>2</sub> (max) mm	h mm	T mm	d mm	L, mm	L <sub>2</sub> mm	Fu (min) kN	kN	q kg/m
WDH104	152.4	104.6	136.9	38.1	9.5	19.05	84.2	91	310	44.5	12
WDH110	152.4	228.6	263.9	38.1	9.5	19.05	147.8	154.5	310	44.5	16.9
WDH120	152.4	222.2	260.4	50.8	12.7	22.23	150.5	157	500	66.8	28.7
WDH112	203.2	228.6	263.9	38.1	9.5	19.05	147.8	154.5	310	44.5	14.1
WDH116	203.2	325.8	358.7	44.5	9.5	19.05	195.4	201.8	320	51.2	18.8
WDH118	203.2	334	378.45	50.8	12.7	22.23	210.7	217.2	500	66.8	32.1
WDH480	203.2	282.4	324.1	50.8	12.7	22.23	182.2	188.7	500	66.8	26.9
WDH580	203.2	282.4	324.1	50.8	12.7	25.4	181.5	189.3	540	91.2	29.2
WDH680	203.2	282.4	330.2	50.8	16	25.4	190.7	198.5	540	91.2	32.5
WDH2210	155.85	228.6	263.9	38.1	9.5	19.05	147.8	154.5	310	44.5	16.70
<b>WDH2380</b>	207.29	282.4	324.1	50.8	12.7	22.23	182.2	188.7	500	66.8	26.6

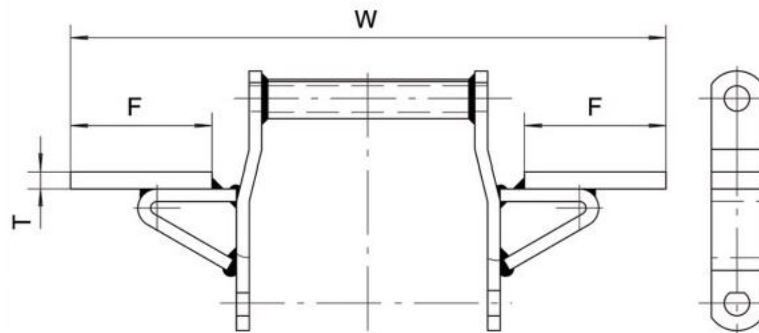
链条销轴经过热处理硬化

All pins of chain have been hardened through heat treatment.

宽系列焊接弯板链附件 Wide Series Welded Crank-Link Mill Chains-Attachments

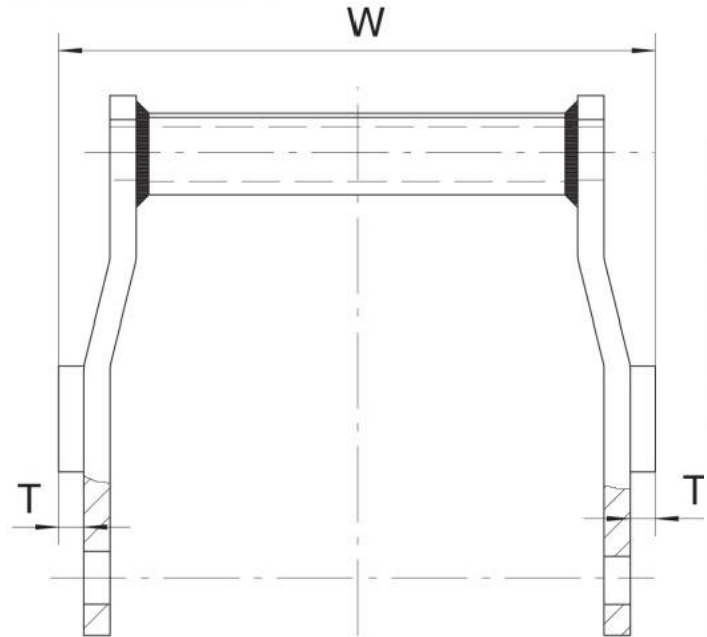
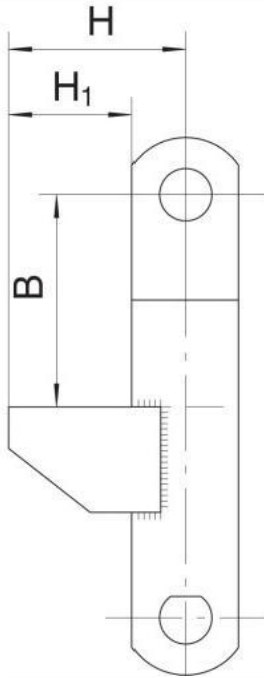


链号 Chain No.	B mm	H mm	T mm	W mm
WING				
WDH110	44.45	38.1	9.5	431.8
WDR110	44.45	38.1	9.5	431.8
WDH112	82.6	38.1	9.5	431.8
WDR112	82.6	38.1	9.5	431.8
WDH2210	57.2	38.1	9.5	431.8
WDR2210	57.2	38.1	9.5	431.8
WDH120	82.6	50.8	12.7	431.8
WDR120	82.6	50.8	12.7	431.8
WDH2380	82.6	50.8	9.5	558.8
WDR2380	82.6	50.8	9.5	558.8
WDH480	63.5	50.8	12.7	558.8
WDR480	63.5	50.8	12.7	558.8

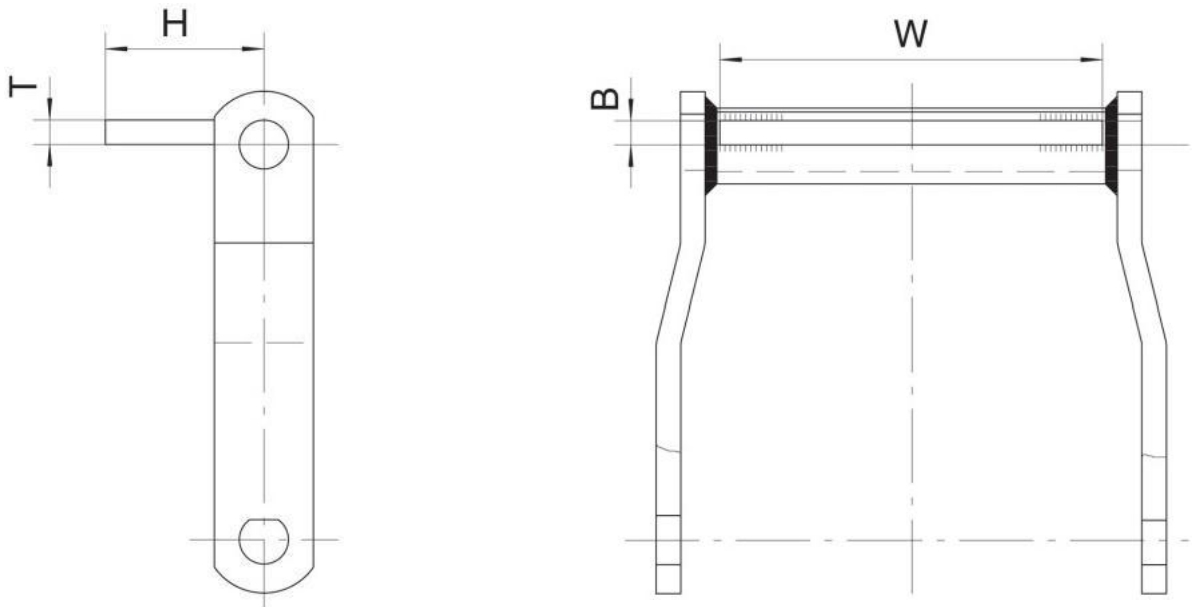


链号 Chain No.	F mm	T mm	W mm
W24			
WDH110	152.4	12.7	609.6
WDR110	152.4	12.7	609.6

## 宽系列焊接弯板链 Wide Series Welded Crank-Link Mill Chains



链号 Chain No.	B mm	H <sub>1</sub> mm	H mm	T mm	W mm
RR					
WDH110	76.2	44.45	63.5	9.5	302.7
WDR110	76.2	44.45	63.5	9.5	302.7
WDH112	76.2	44.45	63.5	9.5	302.7
WDR112	76.2	44.45	63.5	9.5	302.7
WDH2210	76.2	44.45	63.5	9.5	302.7
WDR2210	76.2	44.45	63.5	9.5	302.7
WDH120	76.2	57.15	82.55	12.7	313.4
WDR120	76.2	57.15	82.55	12.7	313.4
WDH480	76.2	57.15	82.55	12.7	377
WDR480	76.2	57.15	82.55	12.7	377
WDH2380	76.2	57.15	82.55	12.7	377
<b>WDR2380</b>	76.2	57.15	82.55	12.7	377



### C1、C3、C4

链号 Chain No.	B mm	H mm	T mm	W mm
C1				
WDH110	9.5	60.5	9.5	231.9
WDR110	9.5	60.5	9.5	231.9
WDH112	9.5	60.5	9.5	231.9
WDR112	9.5	60.5	9.5	231.9
C3				
WDH120	12.7	76.2	12.7	219.2
WDR120	12.7	76.2	12.7	219.2
WDH480	12.7	76.2	12.7	282.7
WDR480	12.7	76.2	12.7	282.7
C4				
WDH110	9.5	95.25	9.5	231.9
WDR110	9.5	95.25	9.5	231.9
WDH112	9.5	95.25	9.5	231.9
WDR112	9.5	95.25	9.5	231.9
WDH480	12.7	127	12.7	282.7
WDR480	12.7	127	12.7	282.7

Tianjin OuNaiDa Transmissions Technology Co., Ltd

天津欧耐达传动科技有限公司



Product Catalog

ADD: No. 10 Tengwang Road, Beichen District, Tianjin 300401

Email: [info@tjond.com](mailto:info@tjond.com)

Website : <https://www.tjond.com>