



Amphibious Excavator Chain

Tianjin OuNaiDa Transmissions Technology Co., Ltd

2026

Direct Manufacturer



TEL: +(86) 022 83703208
Email: info@tjond.com
Website: www.tjond.com



Tianjin Ounaida Transmission Technology Co., Ltd. is a leading enterprise specializing in the R&D and manufacturing of high-performance industrial transmission components. Located in a modern industrial park, the company operates a 9,000-square-meter standardized manufacturing facility dedicated to providing

precise and reliable transmission solutions for the global industrial sector. The company has invested heavily in a full suite of high-precision gear and rack processing equipment and high-end CNC machinery, establishing a complete production chain from raw material processing to precision finishing. To ensure the physical accuracy of every component, we utilize cutting-edge Coordinate Measuring Machines (CMM). Operating under the rigorous ISO 9001:2015 quality management system, we guarantee that our products meet the highest industry standards. With over 20 years of profound technical expertise, Ounaida's primary business includes: Precision Gears and Racks, Linear Guides and Blocks, Ball Screws, Various Precision Transmission Components, Non-standard Custom Parts tailored for specialized industrial conditions. Innovation is our core competitiveness. Our in-house R&D team brings together a group of highly experienced senior engineers and skilled frontline technicians. From initial conceptual design and mechanical analysis to final production, our team provides professional perspectives to optimize transmission efficiency and reduce maintenance costs for our clients.



Comprehensive Industrial Transmission Solutions

We offer a comprehensive range of industrial transmission solutions. Our primary product line includes high-precision gears, racks, timing pulleys, sprockets, roller chains, ball screws, linear guides, linear modules, and other related transmission components.

1. CNC Machining & Assembly

Utilizing advanced CNC machining centers, we provide deep customization services ranging from single-part precision machining to complex component assembly. We ensure micron-level accuracy to meet the most demanding requirements for high-difficulty and non-standard parts.

2. Customized Gearbox Solutions

We specialize in the R&D and customization of various industrial gearboxes. Our one-stop power transmission services cover everything from structural design and gear ratio optimization to final assembly, ensuring high efficiency and stable performance under the most complex operating conditions.

Professional Production Team:

Providing Integrated Design, Drafting, and Manufacturing Services, ensuring the flawless execution of every solution.



Professional Sale Team:

Providing 24hours online service, accurate product quotations, and order tracking services.



Professional Technical Team:

Provides professional solutions, help maintenance customers reduce costs and improve operational efficiency.

Professional After-sale Team:

Comprehensive after-sales support eliminates your worries.

Advanced Equipments



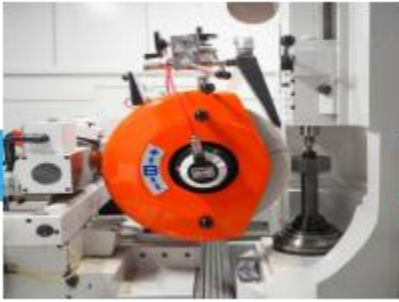
CNC Gear Hobbing



CNC Cylindrical Grinding



CNC Machine Center



CNC Gear Grinding



CNC Gear Chamfering



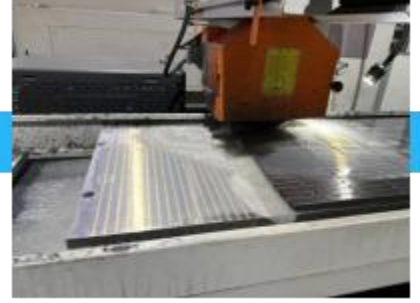
Milling and Turning



CNC Gear Rack Milling



CNC Gear Rack Grinding



CNC Surface Grinder



CNC Rack Chamfering

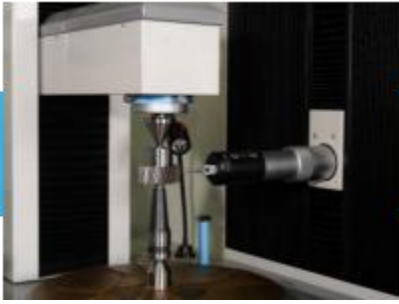


Rack End-Face Milling



CNC Cleaning Machine

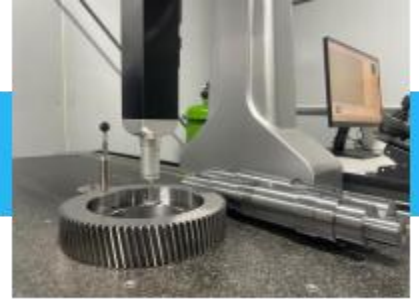
Test machines



CNC Gear Test Center



Pre-stretching and Running-in

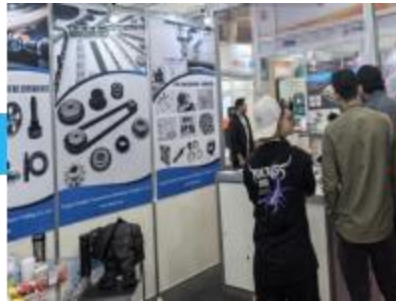


CMM

Exhibitions



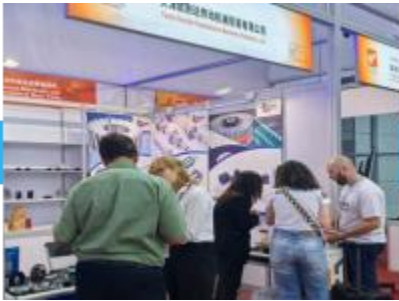
Poland



Brazil



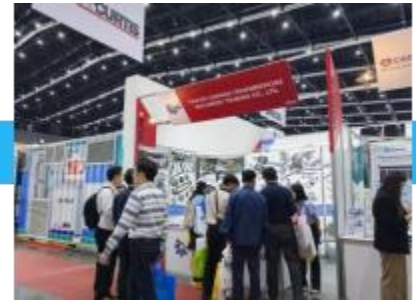
Russia



Canton Fair



Türkiye



Thailand



ISO 9001:2015

Through standardized production management and rigorous quality monitoring processes, we ensure that every stage—from design and raw material procurement to final delivery—strictly complies with international quality standards. We are committed to continuous improvement, providing our clients with high-performance industrial solutions characterized by exceptional stability and excellence.

CE Marking

Our products fully comply with EU CE certification standards, reflecting our adherence to mandatory EU requirements for safety, health, and environmental protection. The CE mark serves not only as a gateway to the international market but also as our solemn commitment to product safety and reliability, ensuring global applicability.

RoHS Compliance

The company strictly adheres to the RoHS environmental directive, implementing rigorous controls over hazardous substances such as lead, mercury, and cadmium throughout the manufacturing process. We are committed to green manufacturing, ensuring all transmission components are safe, eco-friendly, and non-toxic. By meeting international green trade standards, we actively fulfill our social responsibility for environmental protection while pursuing high-efficiency industrial production.



Intelligent Manufacturing

Utilize standardized operational procedures (SOPs) to ensure high efficiency and exceptional stability throughout the manufacturing process



Full-Process Monitoring & Management

From raw material procurement to final product dispatch, we implement a comprehensive digital monitoring system. This ensures that every manufacturing stage adheres strictly to rigorous international quality standards.



Technical Assurance

Our senior technical team focuses on process innovation and solving complex technical challenges, providing a solid foundation for the high-precision manufacturing of every product.



Quality Traceability

We have established a comprehensive quality inspection archive and an after-sales traceability system. This ensures that every product leaving our facility is fully documented and verifiable, providing our clients with absolute peace of mind regarding quality.



Instant Response

We have established an efficient customer communication and feedback mechanism to ensure that all inquiries and technical consultations receive a prompt, first-time response.



Tailored Solutions

We provide flexible, customized design services, optimizing solutions based on customer blueprints or specific operational requirements to precisely transform product concepts into reality.

Global Reach · Boundless Connectivity

With a logistics network spanning over 200 countries, we maintain deep partnerships with major global airlines and ports to ensure seamless, reliable transshipment worldwide.



Ultimate Speed · Punctual Delivery

By optimizing route planning and multimodal transport paths, we significantly shorten cross-border transit cycles and ensure highly controllable delivery timelines.



Competitive Freight · High Cost-Efficiency

Leveraging our large-scale transportation volume and direct first-hand booking channels, we eliminate middleman markups. This allows us to provide highly competitive freight solutions that significantly reduce your total integrated logistics costs.



Efficient Flow · Rapid Clearance

Our professional customs teams are stationed at core logistics hubs, deeply familiar with international customs policies and compliance procedures. By providing pre-clearance services, we drastically accelerate processing speeds and minimize inspection risks.



Full Visibility · Worry-Free After-Sales

By integrating an advanced digital logistics tracking system, we provide real-time updates on shipment status. Additionally, we assign a dedicated account manager to each client, offering one-stop, full-process consultation and after-sales assurance from order placement to final delivery.



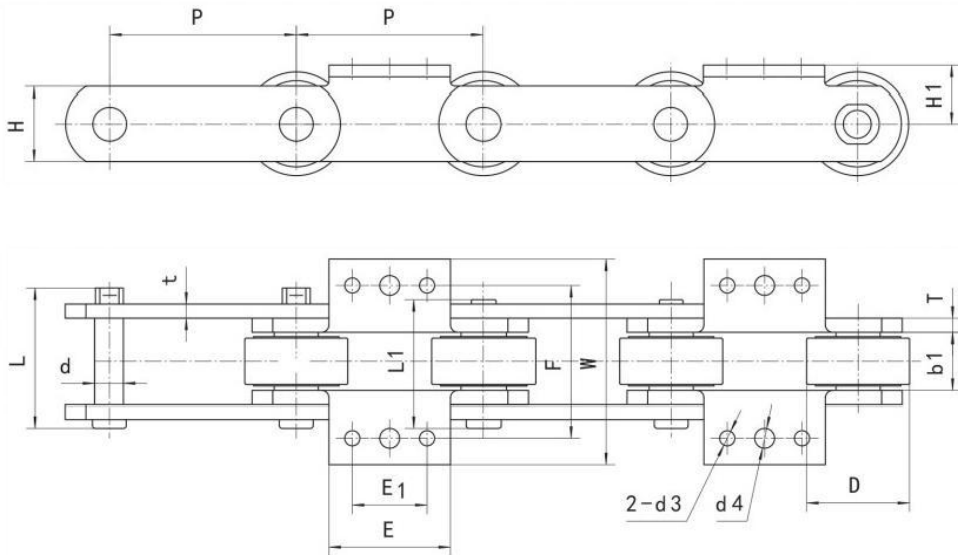
Professional Packaging · Zero-Damage

We provide both standardized and customized reinforced packaging services. Utilizing high-strength anti-collision and shock-absorbing materials, we implement specialized reinforcement for precision products to ensure the total safety of your cargo throughout the entire journey.





水陆两栖挖掘机链条 Amphibious Excavator Chain

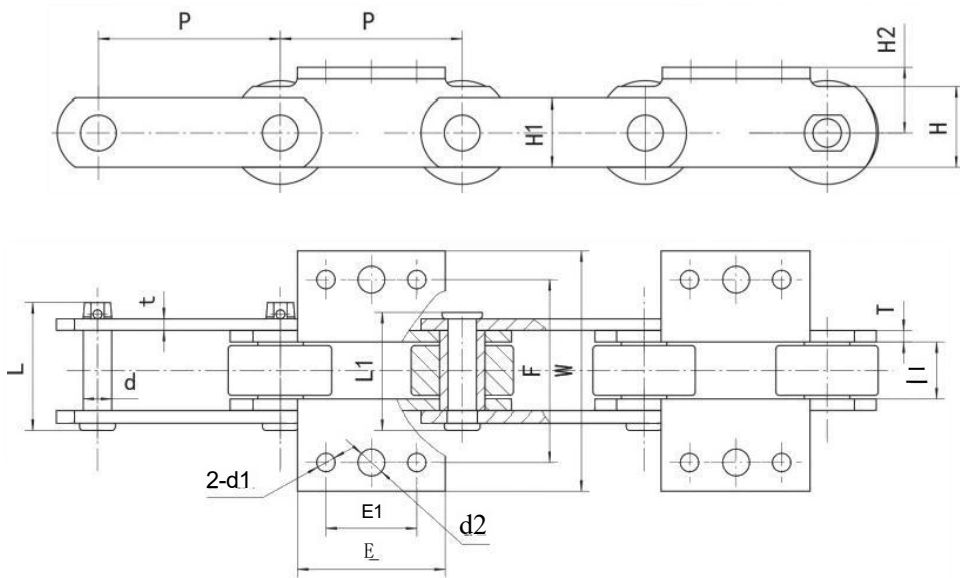


链号 Chain No.	节距 Pitch	内节内宽 Width between Inner sidebar	滚子外径 Roller diameter	销轴 Pin		链板 Sidebar		最小抗拉 强度 Ultimate tensile strength	每米重量 Weight per meter
	P mm	b1 (min) mm	D(max) mm	d mm	L/L1 mm	H/H1 mm	t/T mm	Fu (min) kN	q kg/m
ZY76.2-K3	76.2	25.5	50.8	11.1	61.8/59.3	38.1/33.2	6.4	140	12.4
ZY127-K3	127	38.4	69.85	19	95//86.6	50.8/39.6	9.6	353	21.5

链号 Chain No.	F mm	W mm	E1 mm	E mm	d3 mm	d4 mm
ZY76.2-K3	77.6	101.6	35	57.5	9.8	9.8
ZY127-K3	103.4	139.4	50.8	82.6	10.3	13.5



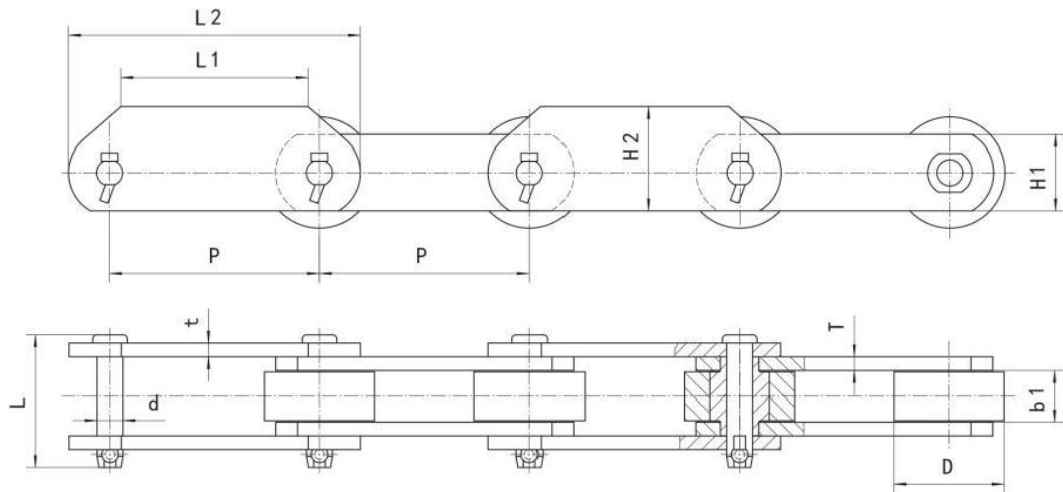
水陆两栖挖掘机链条 Amphibious Excavator Chain



链号 Chain No.	节距 Pitch	内节内宽 Width between Inner sidebar	滚子外径 Roller diameter	销轴 Pin		链板 Sidebar		最小抗拉 强度 Ultimate tensile strength	每米重量 Weight per meter
	P mm	b1 (min) mm	D(max) mm	d mm	L/L1 mm	HH1H2 mm	t/T mm	Fu(min) kN	q kg/m
ZY101.6-K3	101.6	31.8	57.15	15.88	71.8/66.4	44.4/38.1/36	6.4	240	14.2

链号 Chain No.	F mm	w mm	E1 mm	E mm	d3 mm	d4 mm
ZY101.6-K3	101.6	133.6	50.8	82.6	10.3	15

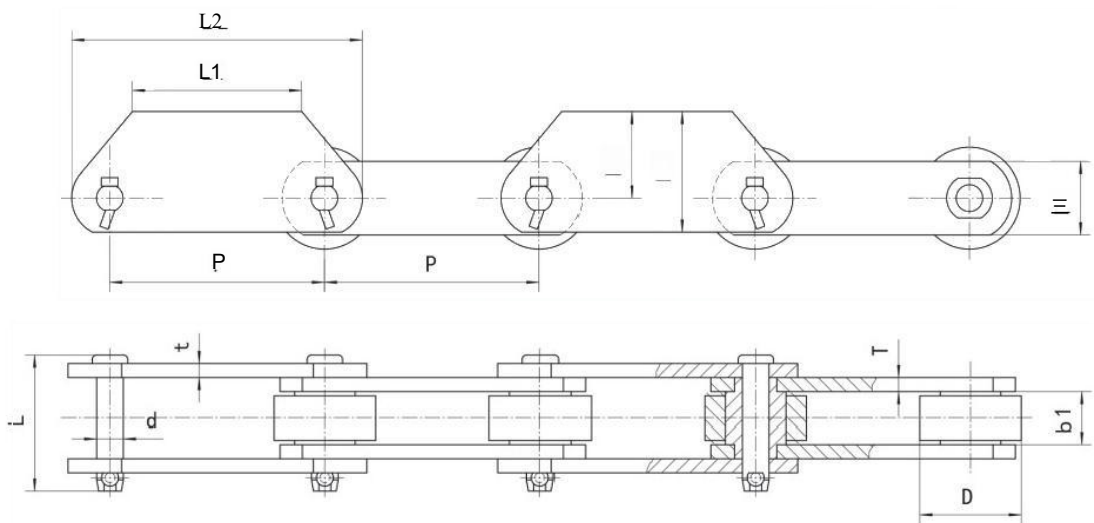
水陆两栖挖掘机链条 Amphibious Excavator Chain



链号 Chain No.	节距 Pitch	内节内宽 Width between Inner sidebar	滚子外径 Roller diameter	销轴 Pin		链板 Sidebar			最小抗拉 强度 Ultimate tensile strength	每米重量 Weight per meter
				d mm	L mm	H1/H2 mm	L1/L2 mm	t/T mm		
SW156-R88.9	156	40.4	88.9	21.9	108.5	55/83	118/212	11	420	27.42
SW152.4-R80	152.4	36.4	80	19	97.5	55/75	136/212	10	330	22.68

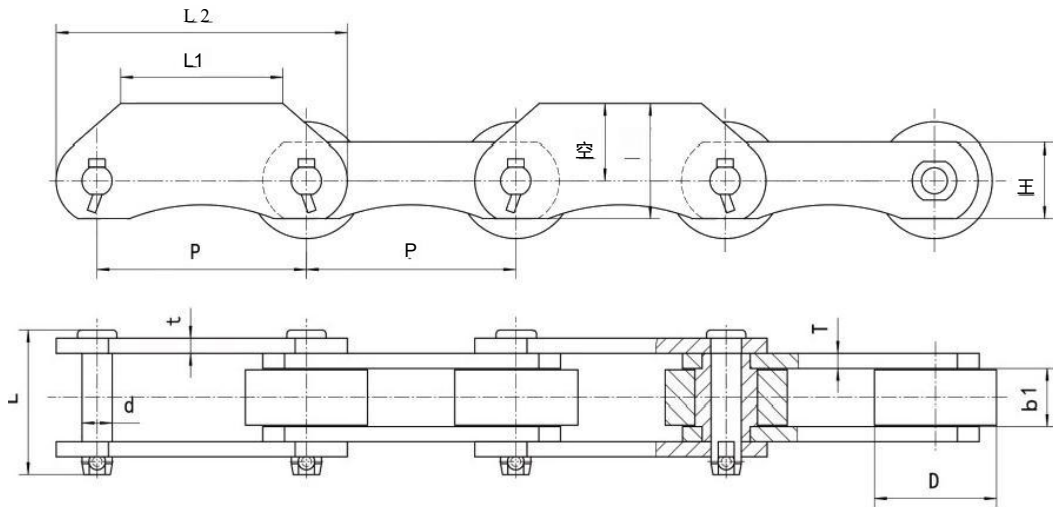


水陆两栖挖掘机链条 Amphibious Excavator Chain



链号 Chain No.	节距 Pitch	内节内宽 Width between Inner sidebar	滚子外径 Roller diameter	销轴 Pin		链板 Sidebar			最小抗拉 强度 Ultimate tensile strength	每米重量 Weight per meter
				d mm	L mm	H1/H2/H3 mm	L1/L2 mm	t/T mm	Fu(min) kN	q kg/m
SW156-R88	156	40	88	21.9	105.2	56/85/61	120/210	11	420	27.16
SW152.4-72	152.4	36.4	72	19	99.8	52/85.2/60.7	120/206.4	10	305	21.3

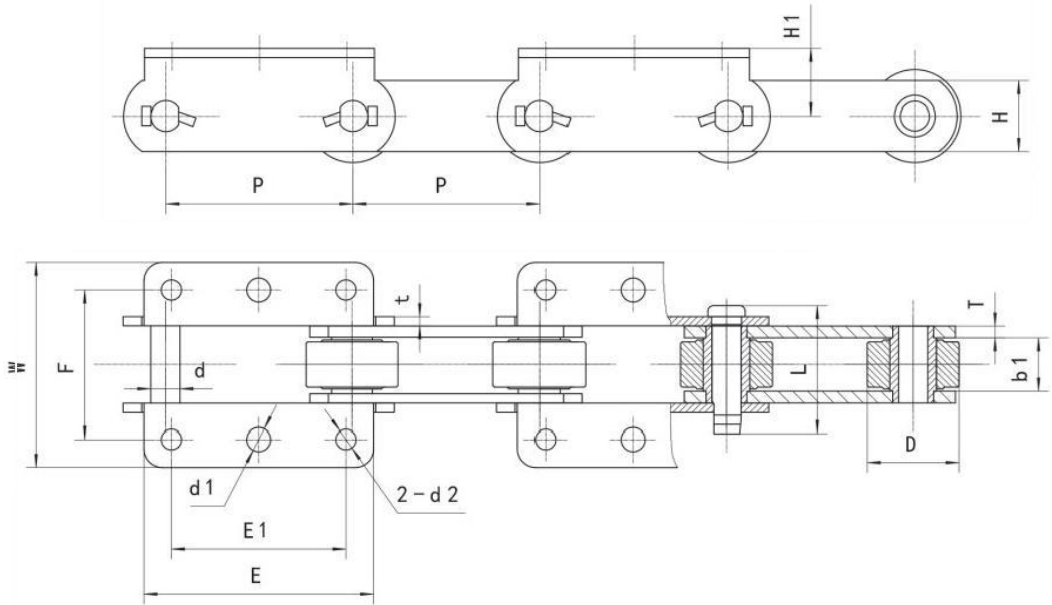
水陆两栖挖掘机链条 Amphibious Excavator Chain



链号 Chain No.	节距 Pitch	内节内宽 Width between Inner sidebar	滚子外径 Roller diameter	销轴 Pin		链板 Sidebar			最小抗拉 强度 Ultimate tensile strength	每米重量 Weight per meter
				d mm	L mm	H1/H2/H3 mm	L1/L2 mm	t/T mm	Fu (min) kN	q kg/m
SW180-R84	180	40.7	84	19.9	107.4	54/92/65	130/240	11	342	27.32



水陆两栖挖掘机链条 Amphibious Excavator Chain

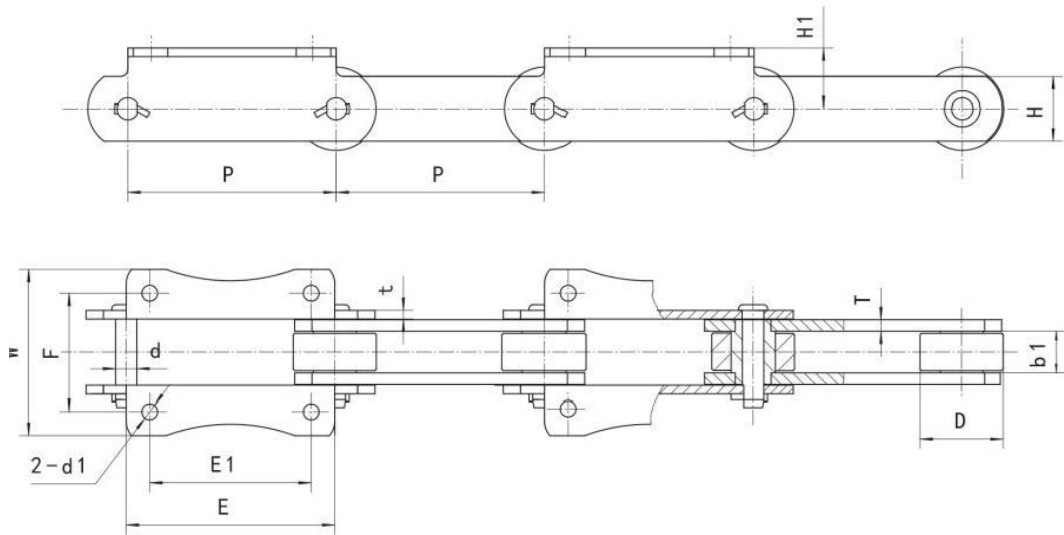


链号 Chain No.	节距 Pitch	内节内宽 Width between Inner sidebar	滚子外径 Roller diameter	销轴 Pin		链板 Sidebar		最小抗拉 强度 Ultimate tensile strength	每米重量 Weight per meter
	P mm	b, (min) mm	D(max) mm	d mm	L mm	H/H1 mm	t/T mm	Fu(min) kN	q kg/m
HK101.6-BK3 • 2P	101.6	28.4	50	15.88	69.3	38.1/36	5/6.4	140	11.16

链号 Chain No.	F mm	W mm	E mm	E1 mm	d1 mm	d2 mm
HK101.6-BK3 • 2P	82	112	125	95	13	11



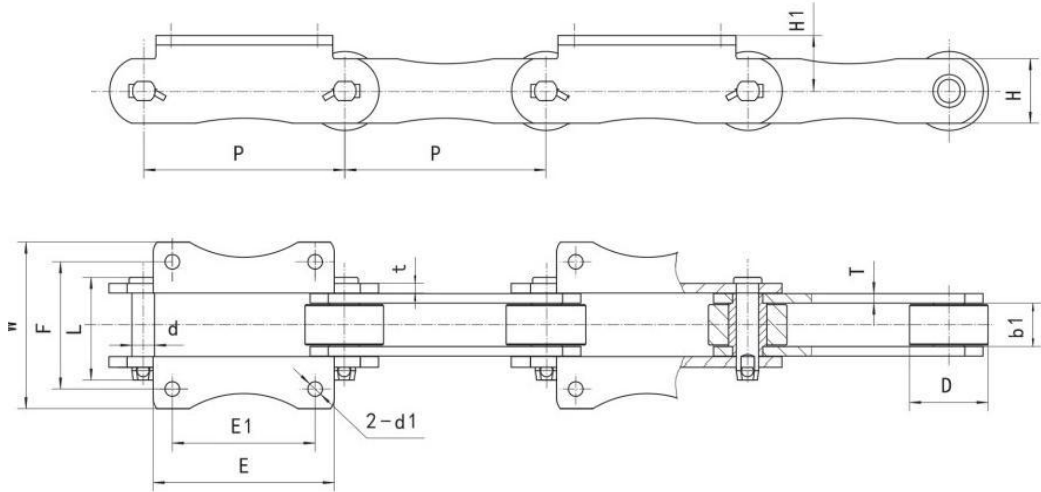
水陆两栖挖掘机链条 Amphibious Excavator Chain



链号 Chain No.	节距 Pitch	内节内宽 Width between Inner sidebar	滚子外径 Roller diameter	销轴 Pin		链板 Sidebar		最小抗拉 强度 Ultimate tensile strength	每米重量 Weight per meter
				d mm	L mm	H/H1 mm	t/T mm		
HK182-BK2 • 2P	182	34.8	78	19.05	86.5	57.2./47.5	6/9.5	350	18.5
HK146-BK2 • 2P	146	28.6	58	15.88	74.2	45/42.5	6/8	200	12.52

链号 Chain No.	F mm	W mm	E mm	E1 mm	d1 mm
HK182-BK2 • 2P	102	140	175	145	13
HK146-BK2 • 2P	82	115	146	113	11

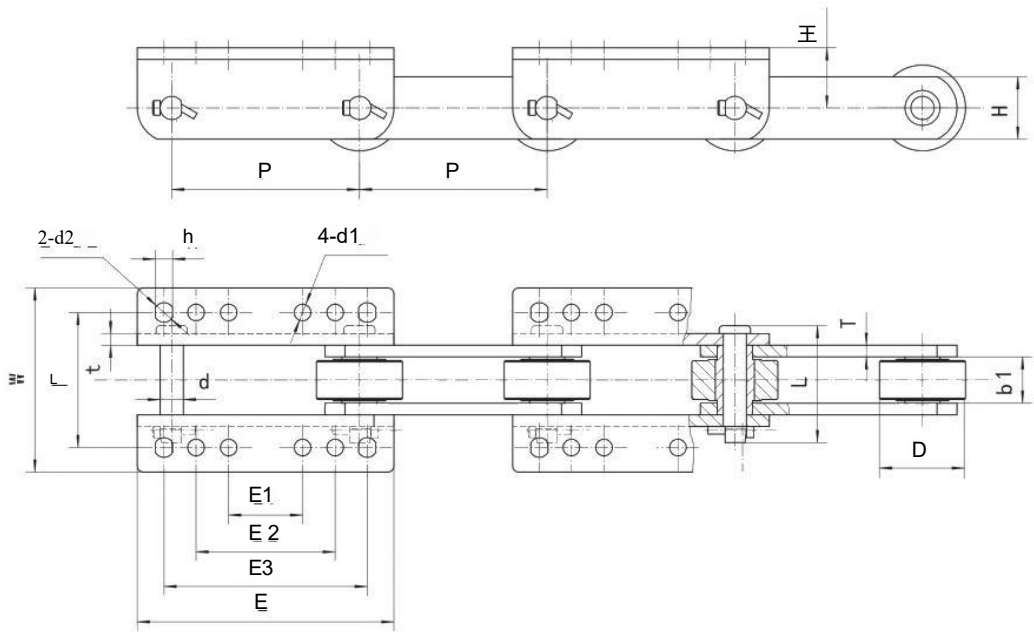
水陆两栖挖掘机链条 Amphibious Excavator Chain



链号 Chain No.	节距 Pitch	内节内宽 Width between Inner sidebar	滚子外径 Roller diameter	销轴 Pin		链板 Sidebar		最小抗拉 强度 Ultimate tensile strength	每米重量 Weight per meter
				d mm	L mm	H/H1 mm	t/T mm		
RF25200-BK2 · 2P	200	b, (min) mm	D(max) mm	22.23 mm	100 mm	63.5/55 mm	9.5 mm	450 kN	22.53 kg/m

链号 Chain No.	F mm	W mm	E mm	E1 mm	d1 mm
RF25200-BK2 · 2P	120	158	180	146	13

水陆两栖挖掘机链条 Amphibious Excavator Chain



链号 Chain No.	节距 Pitch	内节内宽 Width between Inner sidebar	滚子外径 Roller diameter	销轴 Pin		链板 Sidebar		最小抗拉 强度 Ultimate tensile strength	每米重量 Weight per meter
	P mm	b1 (min) mm	D (max) mm	d mm	L mm	H/H1 mm	t/T mm	Fu (min) kN	q kg/m
09060-K6 • 2P	152.4	37.7	69.85	18.9	95.2	50.8/49	9.5	266.6	22.3

链号 Chain No.	F mm	W mm	E mm	E1 mm	E2 mm	E3 mm	d1 mm	d2/h mm
09060-K6 • 2P	110	150	208.4	60	113	165	13.5	16/14



天津欧耐达传动科技有限公司

Tianjin OuNaiDa Transmissions Technology Co., Ltd

Add:No.No. 10 Tengwang Road, Beichen District,Tianjin,China. 300401

Phone: +(86) 022 83703208

E-mail:info@tjond.com

Website:www.tjond.com