



# Steel Pintle Chain

Tianjin OuNaiDa Transmissions Technology Co., Ltd

**2026**

**Direct Manufacturer**

TEL: + (86) 022 83703208  
Email: [info@tjond.com](mailto:info@tjond.com)  
Website: [www.tjond.com](http://www.tjond.com)



Tianjin Ounaida Transmission Technology Co., Ltd. is a leading enterprise specializing in the R&D and manufacturing of high-performance industrial transmission components. Located in a modern industrial park, the company operates a 9,000-square-meter standardized manufacturing facility dedicated to providing

precise and reliable transmission solutions for the global industrial sector. The company has invested heavily in a full suite of high-precision gear and rack processing equipment and high-end CNC machinery, establishing a complete production chain from raw material processing to precision finishing. To ensure the physical accuracy of every component, we utilize cutting-edge Coordinate Measuring Machines (CMM). Operating under the rigorous ISO 9001:2015 quality management system, we guarantee that our products meet the highest industry standards. With over 20 years of profound technical expertise, Ounaida's primary business includes: Precision Gears and Racks, Linear Guides and Blocks, Ball Screws, Various Precision Transmission Components, Non-standard Custom Parts tailored for specialized industrial conditions. Innovation is our core competitiveness. Our in-house R&D team brings together a group of highly experienced senior engineers and skilled frontline technicians. From initial conceptual design and mechanical analysis to final production, our team provides professional perspectives to optimize transmission efficiency and reduce maintenance costs for our clients.



## Comprehensive Industrial Transmission Solutions

We offer a comprehensive range of industrial transmission solutions. Our primary product line includes high-precision gears, racks, timing pulleys, sprockets, roller chains, ball screws, linear guides, linear modules, and other related transmission components.

### 1. CNC Machining & Assembly

Utilizing advanced CNC machining centers, we provide deep customization services ranging from single-part precision machining to complex component assembly. We ensure micron-level accuracy to meet the most demanding requirements for high-difficulty and non-standard parts.

### 2. Customized Gearbox Solutions

We specialize in the R&D and customization of various industrial gearboxes. Our one-stop power transmission services cover everything from structural design and gear ratio optimization to final assembly, ensuring high efficiency and stable performance under the most complex operating conditions.

## Professional Production Team:

Providing Integrated Design, Drafting, and Manufacturing Services, ensuring the flawless execution of every solution.



## Professional Sale Team:

Providing 24hours online service, accurate product quotations, and order tracking services.



## Professional Technical Team:

Provides professional solutions, help maintenance customers reduce costs and improve operational efficiency.

## Professional After-sale Team:

Comprehensive after-sales support eliminates your worries.

# Advanced Equipments



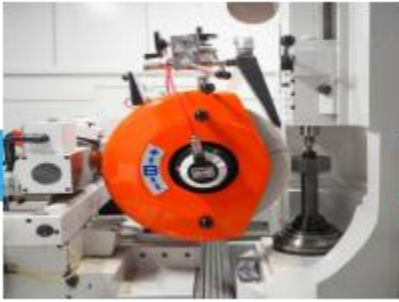
CNC Gear Hobbing



CNC Cylindrical Grinding



CNC Machine Center



CNC Gear Grinding



CNC Gear Chamfering



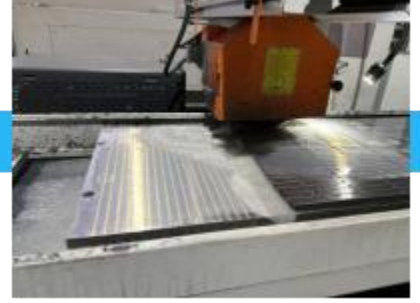
Milling and Turning



CNC Gear Rack Milling



CNC Gear Rack Grinding



CNC Surface Grinder



CNC Rack Chamfering

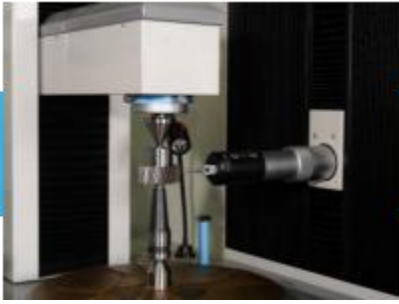


Rack End-Face Milling



CNC Cleaning Machine

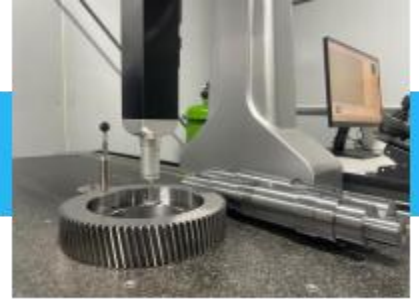
## Test machines



CNC Gear Test Center



Pre-stretching and Running-in

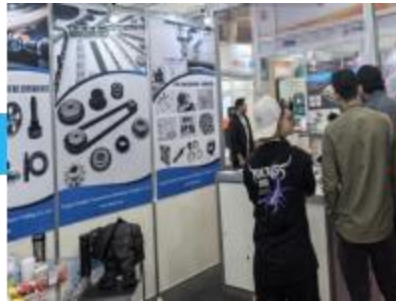


CMM

## Exhibitions



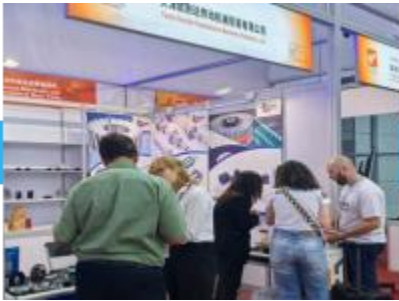
Poland



Brazil



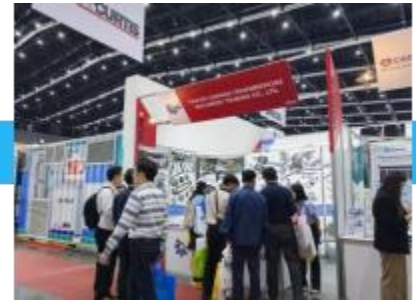
Russia



Canton Fair



Türkiye



Thailand



## ISO 9001:2015

Through standardized production management and rigorous quality monitoring processes, we ensure that every stage—from design and raw material procurement to final delivery—strictly complies with international quality standards. We are committed to continuous improvement, providing our clients with high-performance industrial solutions characterized by exceptional stability and excellence.

## CE Marking

Our products fully comply with EU CE certification standards, reflecting our adherence to mandatory EU requirements for safety, health, and environmental protection. The CE mark serves not only as a gateway to the international market but also as our solemn commitment to product safety and reliability, ensuring global applicability.

## RoHS Compliance

The company strictly adheres to the RoHS environmental directive, implementing rigorous controls over hazardous substances such as lead, mercury, and cadmium throughout the manufacturing process. We are committed to green manufacturing, ensuring all transmission components are safe, eco-friendly, and non-toxic. By meeting international green trade standards, we actively fulfill our social responsibility for environmental protection while pursuing high-efficiency industrial production.



## Intelligent Manufacturing

Utilize standardized operational procedures (SOPs) to ensure high efficiency and exceptional stability throughout the manufacturing process



## Full- Process Monitoring & Management

From raw material procurement to final product dispatch, we implement a comprehensive digital monitoring system. This ensures that every manufacturing stage adheres strictly to rigorous international quality standards.



### Technical Assurance

Our senior technical team focuses on process innovation and solving complex technical challenges, providing a solid foundation for the high-precision manufacturing of every product.



### Quality Traceability

We have established a comprehensive quality inspection archive and an after-sales traceability system. This ensures that every product leaving our facility is fully documented and verifiable, providing our clients with absolute peace of mind regarding quality.



### Instant Response

We have established an efficient customer communication and feedback mechanism to ensure that all inquiries and technical consultations receive a prompt, first-time response.



### Tailored Solutions

We provide flexible, customized design services, optimizing solutions based on customer blueprints or specific operational requirements to precisely transform product concepts into reality.

## Global Reach · Boundless Connectivity

With a logistics network spanning over 200 countries, we maintain deep partnerships with major global airlines and ports to ensure seamless, reliable transshipment worldwide.



## Ultimate Speed · Punctual Delivery

By optimizing route planning and multimodal transport paths, we significantly shorten cross-border transit cycles and ensure highly controllable delivery timelines.



## Competitive Freight · High Cost-Efficiency

Leveraging our large-scale transportation volume and direct first-hand booking channels, we eliminate middleman markups. This allows us to provide highly competitive freight solutions that significantly reduce your total integrated logistics costs.



## Efficient Flow · Rapid Clearance

Our professional customs teams are stationed at core logistics hubs, deeply familiar with international customs policies and compliance procedures. By providing pre-clearance services, we drastically accelerate processing speeds and minimize inspection risks.



## Full Visibility · Worry-Free After-Sales

By integrating an advanced digital logistics tracking system, we provide real-time updates on shipment status. Additionally, we assign a dedicated account manager to each client, offering one-stop, full-process consultation and after-sales assurance from order placement to final delivery.

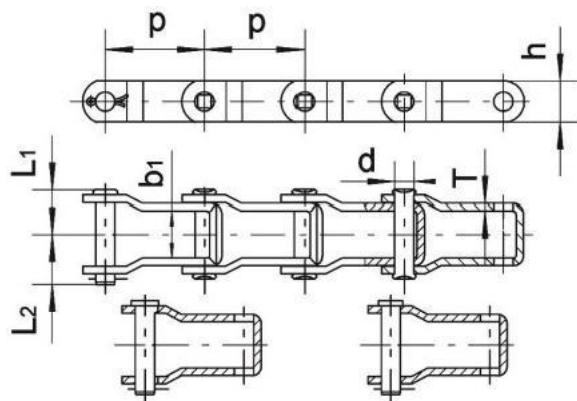


## Professional Packaging · Zero-Damage

We provide both standardized and customized reinforced packaging services. Utilizing high-strength anti-collision and shock-absorbing materials, we implement specialized reinforcement for precision products to ensure the total safety of your cargo throughout the entire journey.



# 钢制销合链 Steel Pintle Chains



Tear Drop Type CL

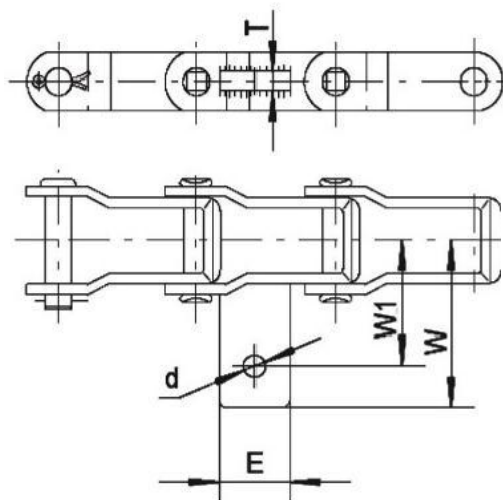
Ordinary Type CL

链号 Chain No.	节距 Pitch	每10FT 节数 Links per 10FT	每英尺 净重 Weight per FT	最小抗拉 强度 Ultimate Tensile strength	平均拉 伸强度 Average tensile strength	最大允许工 作载荷 Maximum recommen ded working load	窄端 内宽 Inside width at narrow end	销轴 Pin			链板 Plate						
								q	Q(min)	QKN	kN	b1	d	L1	L2	h	T
D205	31.75 1.25	96	0.186 0.41	18 4,050	21.8 4,900	2.5 560	9.53 0.375	5.08 0.2	10.7 0.421	13.5 0.543	11.9 0.469	2.1 0.083					
662	42.27 1.664	72	0.506 1.12	42.5 9,560	49.8 11,200	7.6 1,710	23.2 0.913	7.16 0.282	20.75 0.817	22.95 0.904	18.3 0.72	3.20 0.126					
662H	42.27 1.664	72	0.622 1.37	48.9 11,000	52 11,700	7.8 1,755	23.2 0.913	7.16 0.282	21.45 0.844	23.85 0.939	20.4 0.803	3.6 0.142					
662HD	42.27 1.664	72	0.812 1.79	60 13,500	65.8 14,800	9.3 2,090	23.2 0.913	7.92 0.312	22.75 0.896	25.45 1.002	22.23 0.87	4.3 0.17					
667X	57.15 2.25	53	0.887 1.95	88.9 20,000	96.5 21,700	13.4 3,010	27 1.063	11.1 0.437	25 0.984	29.3 1.154	23.8 0.937	4.3 0.17					
667XH	57.15 2.25	53	1.314 2.89	124.5 28,000	138 31,050	21.4 4,810	27.8 1.094	11.91 0.469	29.05 1.144	32.25 1.27	26.8 1.055	5.7 0.224					
667K	57.15 2.25	53	1.159 2.55	106.8 24,000	132 29,700	17.78 4,000	27.8 1.094	11.1 0.437	27.75 1.093	30.85 1.215	26.8 1.055	5.1 0.20					
667KC	57.15 2.25	53	1.16 2.56	137.35 30,900	148 33,290	21.33 4,800	27.8 1.094	11.1 0.437	27.75 1.093	30.85 1.215	26.8 1.055	5.1 0.20					
667H	58.75 2.313	52	0.564 1.24	52.1 11,720	57.4 12,900	8.5 1,910	25.6 1.008	7.92 0.312	21.85 0.86	24.25 0.955	22.23 0.875	3.2 0.126					
667J	57.15 2.313	53	0.854 1.88	86.5 19,460	95 21,370	13.1 2,950	27 1.063	9.52 0.375	25 0.984	29.3 1.154	23.8 0.937	4.3 0.17					
88K	66.27 2.609	46	1.098 2.41	106.8 24,000	132 29,700	17.8 4,000	27.8 1.094	11.1 0.437	27.75 1.093	30.85 1.215	26.8 1.055	5.1 0.20					
88C	66.27 2.609	46	1.601 3.53	152 34,200	169 38,020	26.7 6,000	31.75 1.25	12.7 0.5	32.65 1.285	35.65 1.404	28.58 1.125	6.4 0.25					
308C	78.1 3.075	39	2.54 5.59	200 45,000	222 50,000	35.6 8,000	32.5 1.28	15.88 0.625	38.25 1.506	41.75 1.644	38.1 1.5	8 0.315					

## 钢制销合链-附件 Steel Pintle Chains-Attachments

Att No	Chain No	W1	W	d	E	T
AS	662	34.93	48.4	7.14	23.83	4.5
	667H	51.6	66.68	8.71	28.58	6.4
	667X	51.6	68.66	8.71	28.58	8
	667XH	51.6	69.85	9.9	31.8	9.5
	667K	51.6	71.42	10.31	31.75	9.5
	88K	51.6	71.42	10.31	31.75	9.5
	88C	69.85	93.73	11.1	38.1	9.5
ASS	662	34.93	48.4	8.71	23.83	4.5
	667H	51.6	66.68	10.31	28.58	6.4
	667X	51.6	68.66	10.31	28.58	8
	667K	34.93	71.42	11.89	31.75	9.5
	88K	51.6	71.42	11.89	31.75	9.5
AS2	667H	51.6	65.89	11.89	31.75	6.4
	667X	51.6	68.66	11.89	31.75	8
	667XC	51.6	68.66	11.89	31.75	8

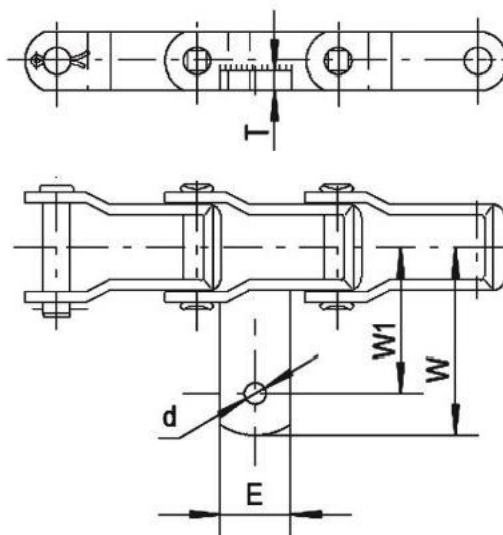
AS ASS AS2



The attachment is also applicable to bilateral belt, it corresponding names are KS,KSS,KS2.

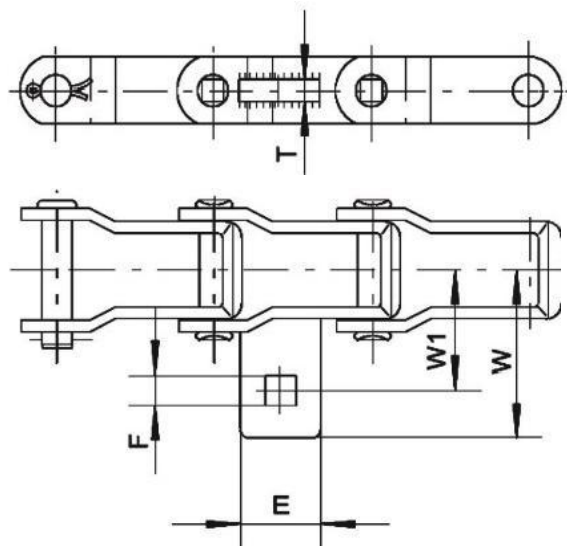
Att No	Chain No	W1	W	d	E	T
ASW	667K	69.85	84.12	9.52	31.75	6.4
	667KC					

ASW



The attachment is also applicable to bilateral belt, it corresponding name is KSW.

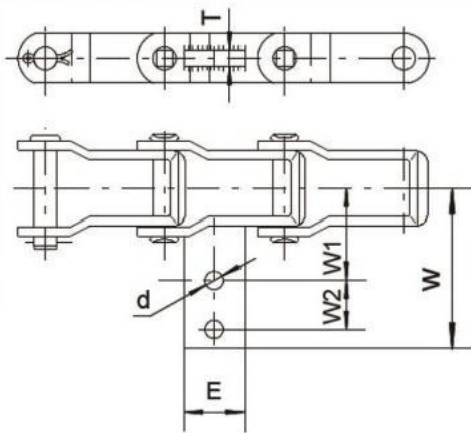
SAS



Att No	Chain No	W1	W	E	F	T
SAS	667X	43.5	60	28.5	9.9	6.4
	667XA	43.5	60	28.5	8.3	6.4

钢制销合链-附件 Steel Pintle Chains-Attachments

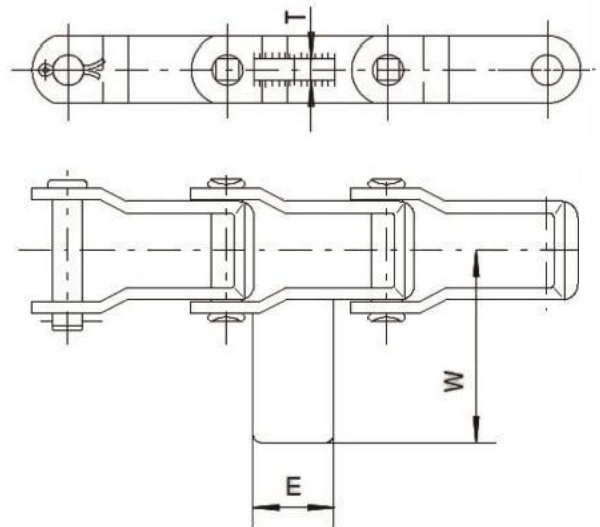
A22



Att No	Chain No	W1	W2	w	d	E	T
A22	662	34.93	15.875	60.33	7.14	23.83	4.34
	88K	54	63.5	136.53	10.31	38.1	19.05

The attachment is also applicable to bilateral belt, its corresponding names are K22.

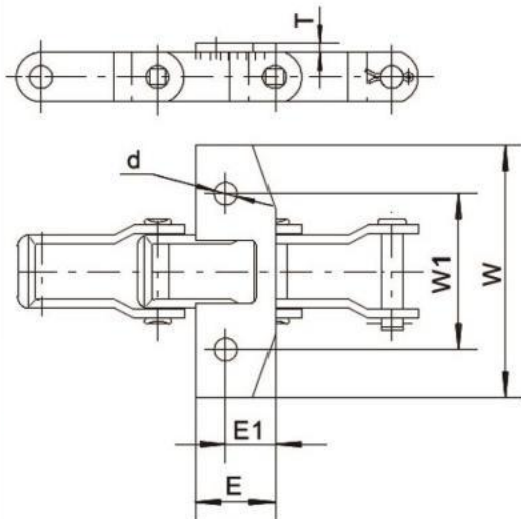
AN



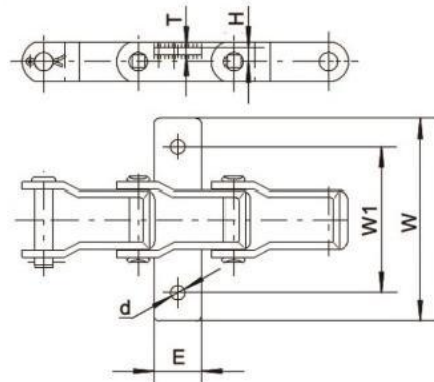
Att No	Chain No	W	E	T
AN	662	47.63	23.83	4.34
	667H	69.06	31.75	7.92
	667X	68.28	28.58	7.92
	667K	71.42	31.75	9.53
	88K	71.42	31.75	9.53

The attachment is also applicable to bilateral belt, its corresponding names is KN.

K1U



Att No	Chain No	W1	W	E1	E	d	T
K1U	88K	95.25	127	20	35	11	3.2

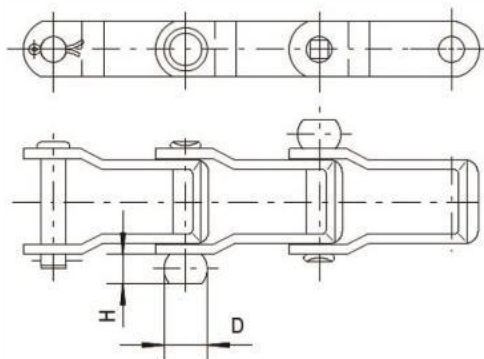


Att No	Chain No	W1	W	E	H	d	T
KS	667XH	95.25	118.3	28.6	8.6	9.5	6.4
	88C	103.2	127.8	28.6	9.5	9.5	6.4

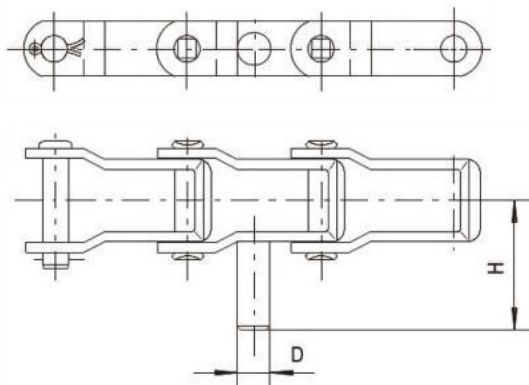
钢制销合链-附件 Steel Pintle Chains-Attachments

Att No	Chain No	H	D
BRH	88K	15.5	20.65

**BRH**



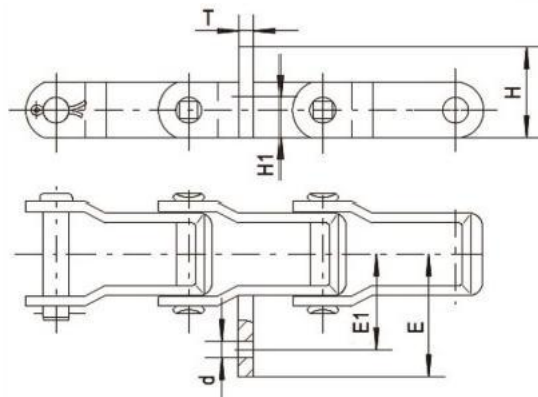
**D1**



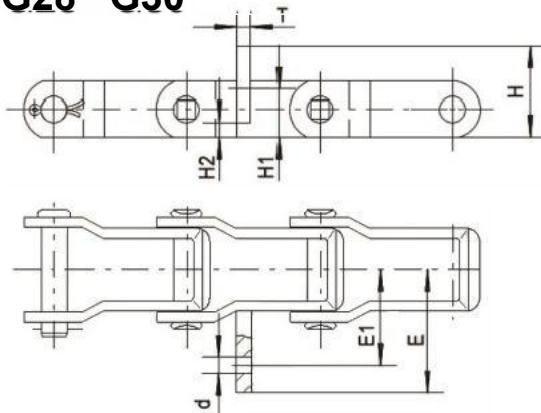
Att No	Chain No	H	D
D1	662	52.78	12.7

Att No	Chain No	E1	E	d	H1	H	T
G27	667H	51.59	65.89	8.71	14.27	28.58	6.4
	667X 667XC	51.59	68.28	8.71	14.27	28.58	8
G27T	667H	51.59	66.68	7.124	20.62	34.93	6.4
	667X 667XC	51.59	68.28	8.71	20.62	34.93	8

**G27 G27T**



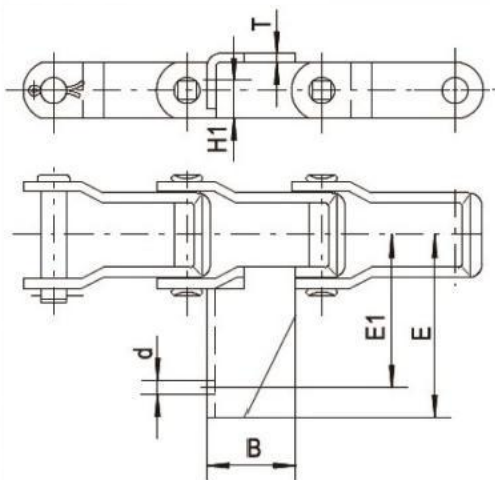
**G28 G30**



Att No	Chain No	E1	E	d	H1	H2	H	T
G28	662	31.75	43.66	7.14	20.62	4.78	33.32	6.4
G30	662	33.32	47.63	8.71	19.05	4.78	33.31	6.4

## 钢制销合链-附件 Steel Pintle Chains-Attachments

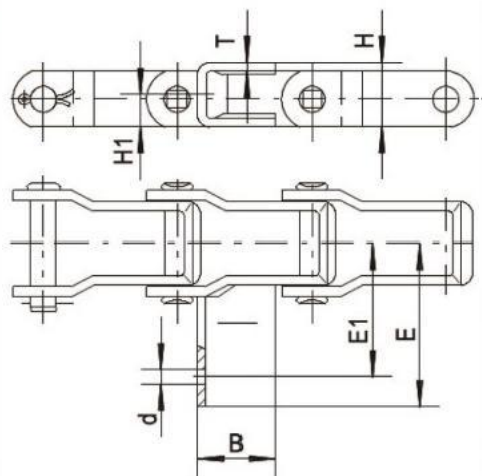
### G37 G37S G38



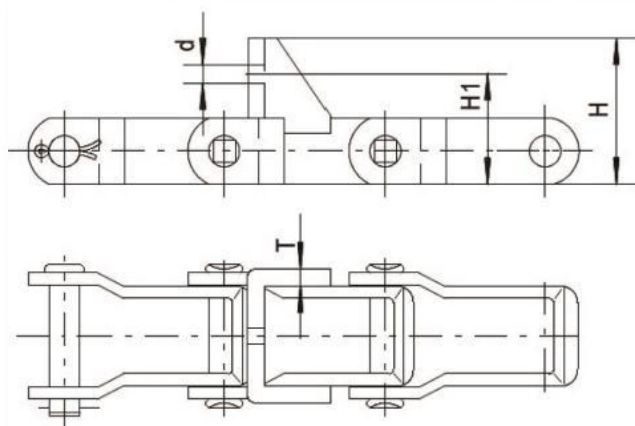
Att No	Chain No	E1	E	B	d	H1	T
G37	662	49.23	59.54	28.58	5.54	11.91	3.1
G37S	662	49.23	59.54	28.58	5.54	11.91	3.1
G38	662	49.213	59.54	28.58	8.71	11.91	3.1

### G50

Att No	Chain No	E1	E	d	B	H1	H	T
G50	662	39.67	54.76	10.31	25.4	11.13	22.23	3.4
	667H	41.28	55.58	10.31	25.4	11.13	22.23	3.4
	662HD	50	65.5	9.92	25.4	11.15	22.23	3.8



### C1 C11

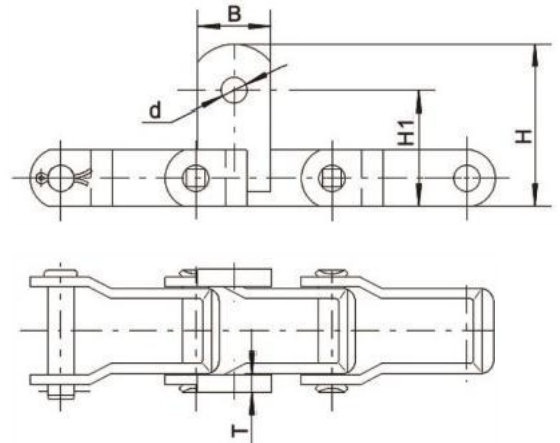


Att No	Chain No	H1	H	d	T
C1	662	32.54	45.24	7.14	2.7
	667X	38.1	49.2	7.14	4.8
C11	662	32.54	45.24	8.71	2.7

钢制销合链-附件 Steel Pintle Chains-Attachments

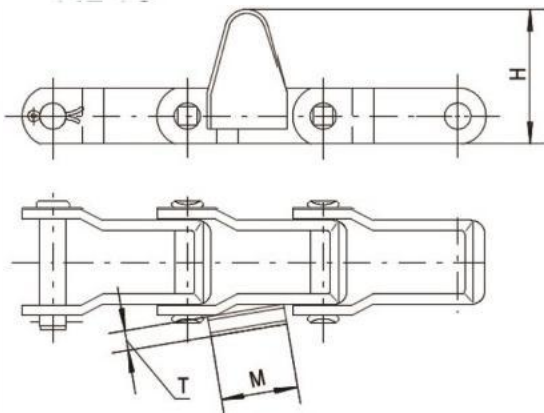
Att No	Chain No	H1	H	B	d	T
M1	88K	64.3	78.6	38.1	15.9	5.1
M2	667X	57.94	80.16	38.1	22.23	8
	88K	61.1	83.34	38.1	22.23	8
	308C	72.21	94.44	38.1	22.23	8

M1 M2



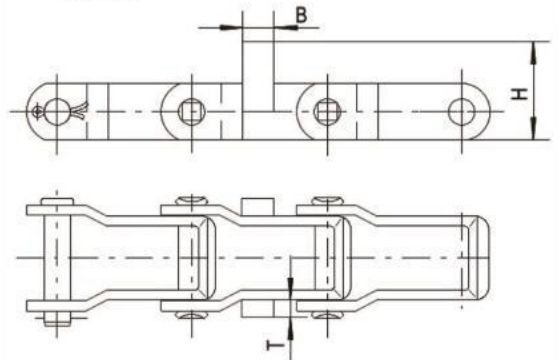
Att No	Chain No	H	M	T
HB10	662	43.26	25.4	4.8

HB10

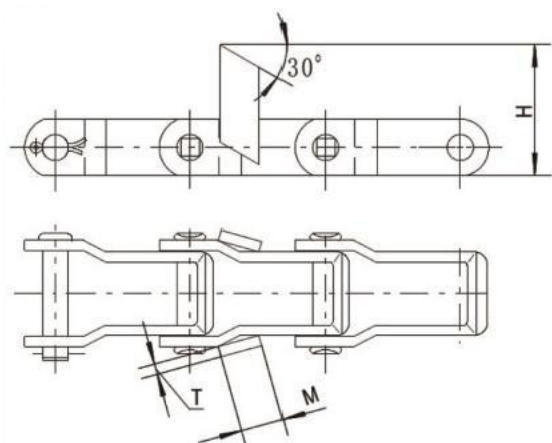


Att No	Chain No	B	H	T
HB1	667X	12.7	25.4	6.4

HB1

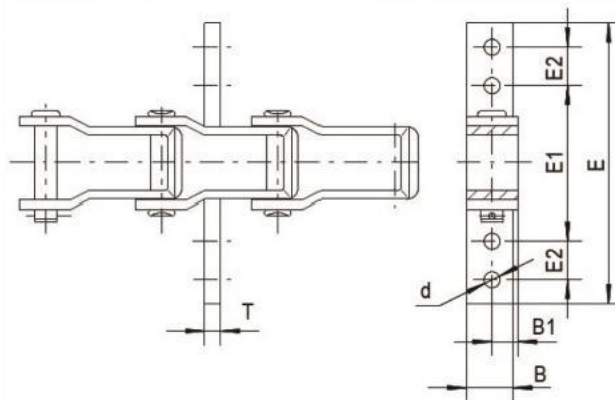


HB4 HB4S



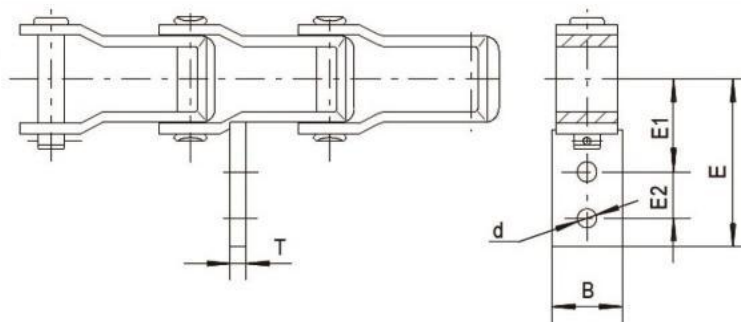
Att No	Chain No	M	T	H
HB4	662	18.3	3.2	59.54
	667H	18.3	3.2	63.5
	667X	18.3	3.2	57.15
HB4S	662	19.15	3.1	44.45

### FS7 FS15



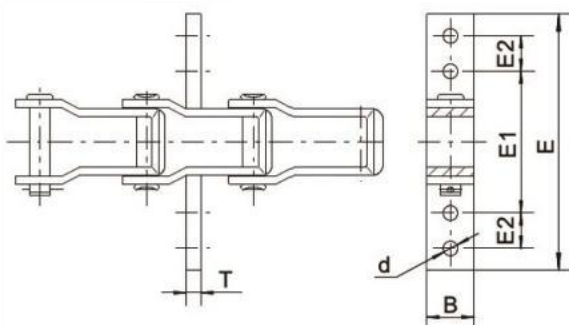
Att No	Chain No	E1	E2	E	B1	B	d	T
FS7	667H	76.2	31.75	177.8	12.7	19.05	10.31	9.53
	667X	76.2	31.75	177.8	15.875	19.05	10.31	9.53
FS15	88K	96.52	76.2	299.72	13.49	25.4	8.71	6.4

### G2 G9



Att No	Chain No	E1	E2	E	B	d	T
G2	88K	57.15	19.05	88.9	25.4	9.53	6.4
	88C	57.15	19.05	88.9	25.4	9.53	6.4
G9	88C	55.55	34.93	114.3	38.1	8.71	9.5

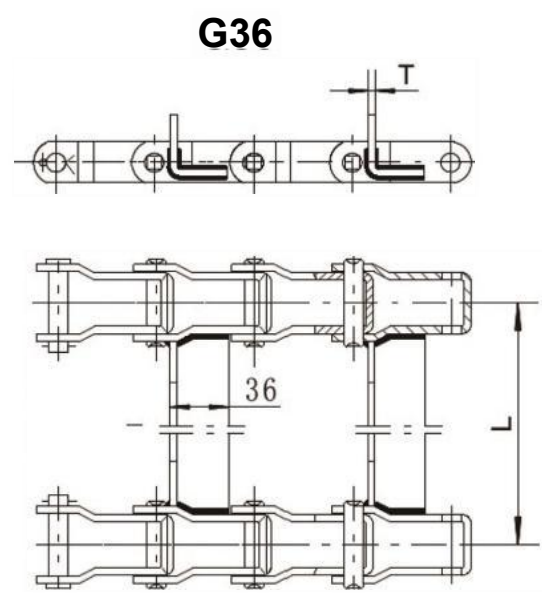
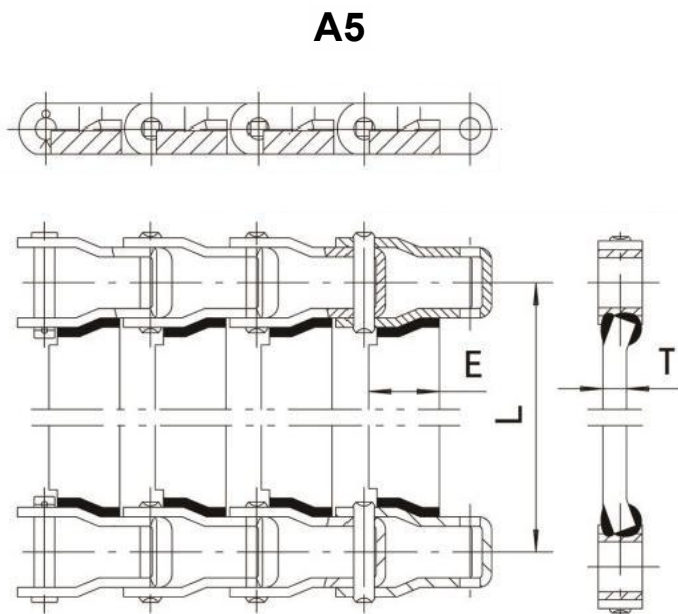
### SF22



Att No	Chain No	E1	E2	E	B	d	T
SF22	667K	108	63.5	273	25.4	10.31	9.5
	667KC	108	63.5	273	25.4	10.31	9.5
	88C	127	50.8	254	28.6	8.3	8

钢制销合链-附件 Steel Pintle Chains-Attachments

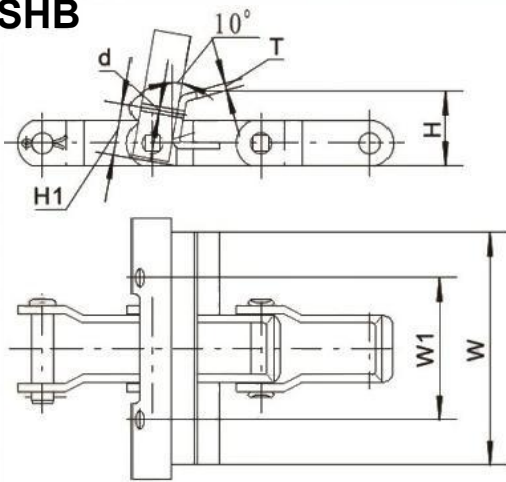
Att No	Chain No	L	E	T
A5	662	247.65	19.05	6.4
		263.53	19.05	6.4
		258.78	19.05	6.4
		357.2	19.05	6.4
		266.7	25.4	6.4
		266.7	25.4	4.8
		327.03	19.05	6.4
		311.15	19.05	4.8
	667X	539.75	38.1	6.4
		515.137	38.1	6.4
	667X	533.4	31.75	9.5
	667XSS	410	38.1	6.4
	667K	536.7	38.1	8.5
		536.7	38.1	9.65
		638.3	38.1	12.7
	667XH	758.95	38.1	12.7
		510	30	6
	667H	326.92	38.1	6.4
361.95		25.4	6.4	
324.637		25.4	6.4	



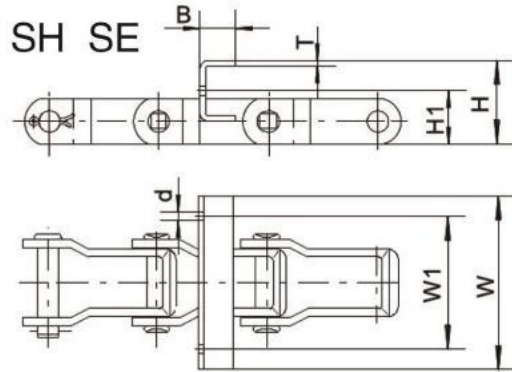
Att No	Chain No	L	T
G36	667X	930.3	5
	667H	930.3	5

钢制销合链-附件 Steel Pintle Chains-Attachments

**SHB**

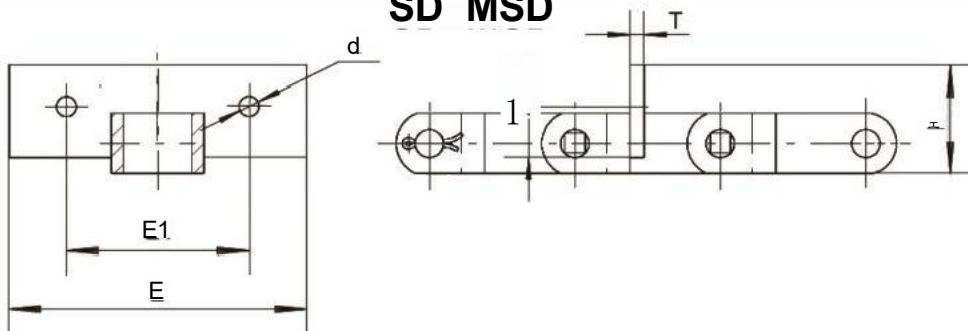


Att No	Chain No	H1	H	W1	W	d	T
SHB	662	22.23	38.1	63.5	133.35	7.14	3.1



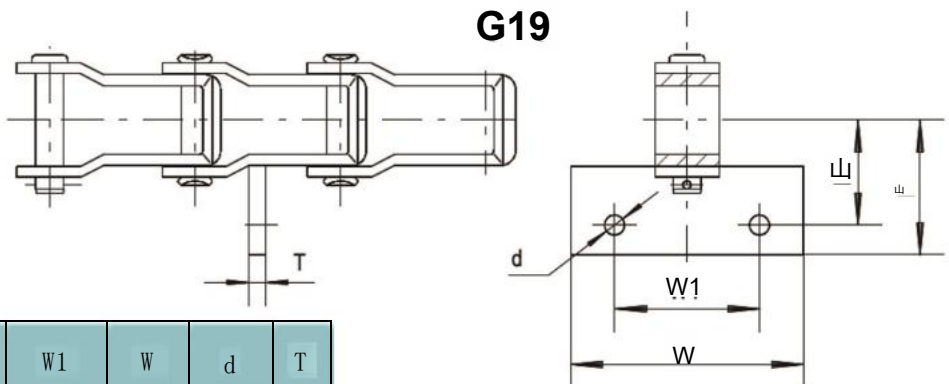
Att No	Chain No	H1	H	B	T	W1	W	0
SH	662	25.4	39.67	15.875	3.1	79.38	101.6	7.14
	667H	30.18	44.45	15.875	3.1	79.38	101.6	7.14
SE	662	25.4	39.67	15.875	3.1	79.38	101.6	8.71
	667H	30.18	44.45	15.875	3.1	79.38	101.6	8.71

**SD MSD**

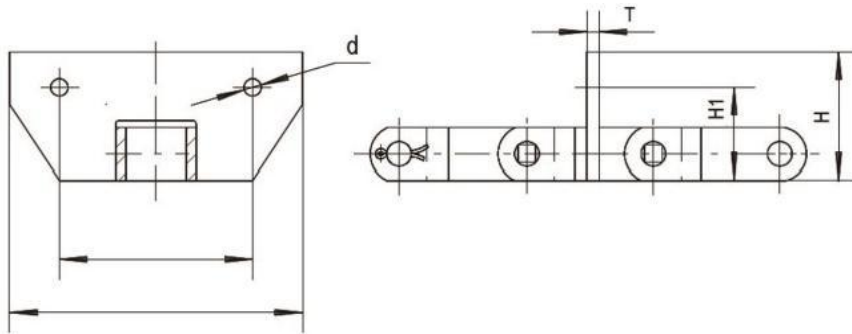


Att No	Chain No	E1	E	d	H1	H	T
SD	667H	/	133.4	/	/	38.1	6.4
MSD	662	63.5	82.6	7.14	19.8	34.14	3.4

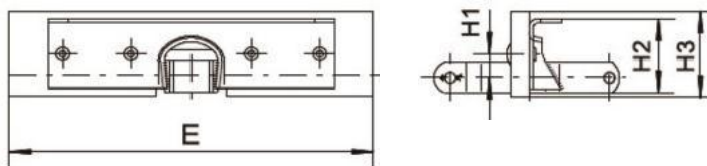
**G19**



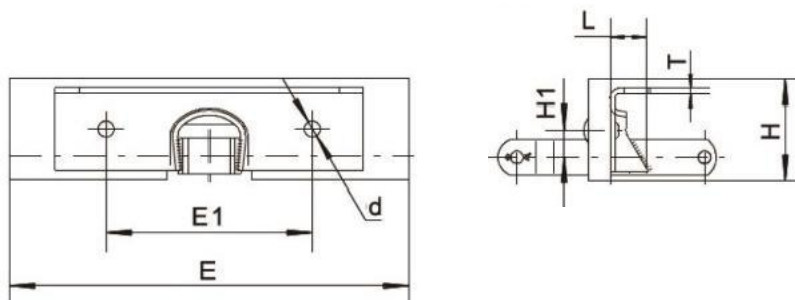
Att No	Chain No	E1	E	W1	W	d	T
G19	88K	57.15	69.85	66.68	88.9	10.31	6.4

**FS**


Att No	Chain No	H1	H	T	d	E1	E
FS	667X 667XC	36.53	47.63	4.8	8.71	76.2	101.6

**F12M F12MH**


Att No	Chain No	H1	H2	H3	E
F12M	662H	17.8	54	63.5	203.2
	667H	16.9	54	63.5	270
F12MH	667H	16.9	54	63.5	270

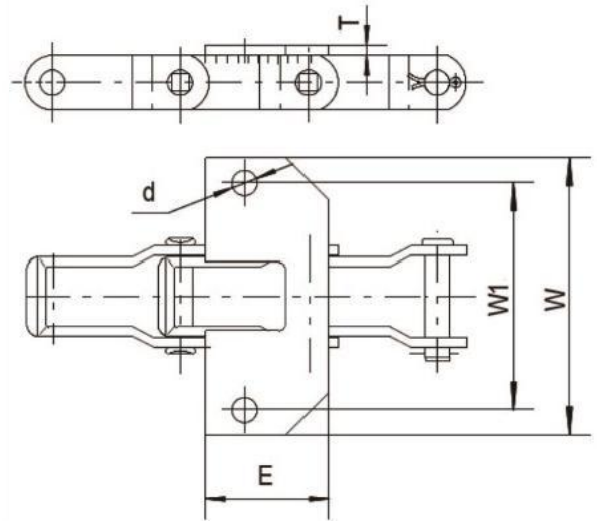
**F10 F10L F11**


Att No	Chain No	H1	H	T	L	d	E1	E
F10	662	25.4	50	2.7	14.27	8.71	88.9	136.5
	667H	31.75	56.36	2.7	15.875	8.71	88.9	136.5
F10L	667H	31.75	50	2.7	22.23	8.71	88.9	136.5
F11	662	25.4	50	2.7	14.27	8.71	88.9	187.3
	667H	31.75	56.36	2.7	15.875	8.71	88.9	187.3

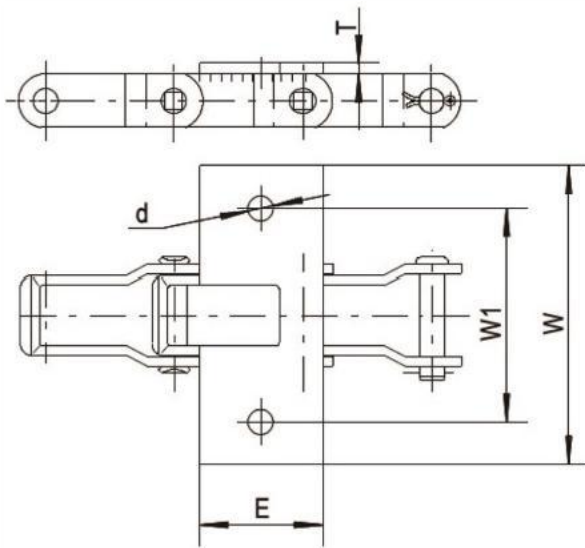
钢制销合链-附件 Steel Pintle Chains-Attachments

Att No	Chain No	W1	W	E	d	T
AK1	662	74.63	88.9	35	7.14	3.05
K1	662	62.71	82.55	35	7.14	3.1
	667H	62.71	82.55	35	7.14	3.1
	667X	62.71	82.55	35	7.14	3.1
	88K	95.25	127	35	11	3.2
K19	662	50.8	71.42	35	7.14	3.1

**AK1 K1 K19**

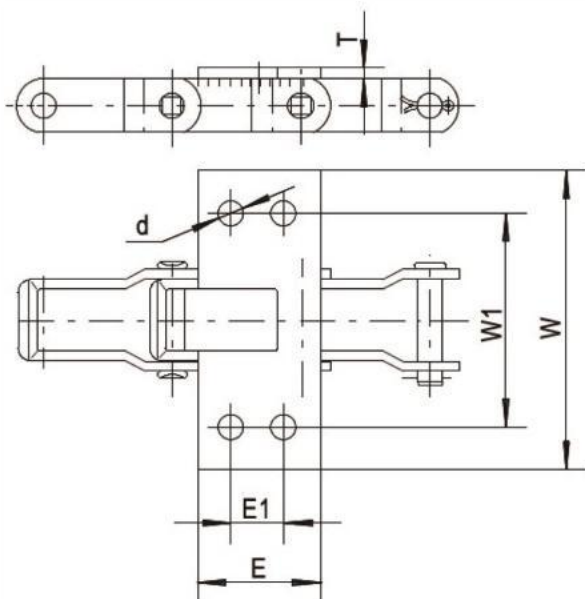


**K1C K1M K1P**



Att No	Chain No	W1	W	E	d	T
K1C	88K	95.3	127	47.63	10.31	4.8
K1M	88K	101.6	127	47.63	9.92	4.8
K1P	88K	96.84	127	47.63	8.3	4.8

**K2C K2M K2P**

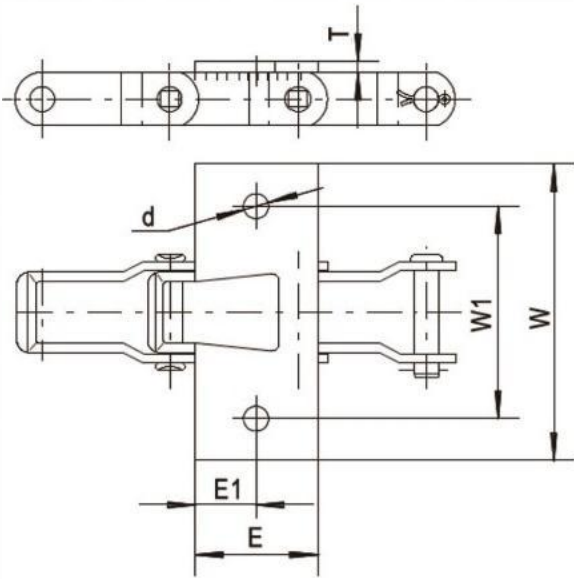


Att No	Chain No	W1	W	E1	E	d	T
K2C	88K	106.4	127	31.75	57.15	8.71	4.8
K2M	88K	101.6	127	28.58	57.15	10.31	4.8
K2P	88K	92.08	127	31.75	57.15	8.71	4.8

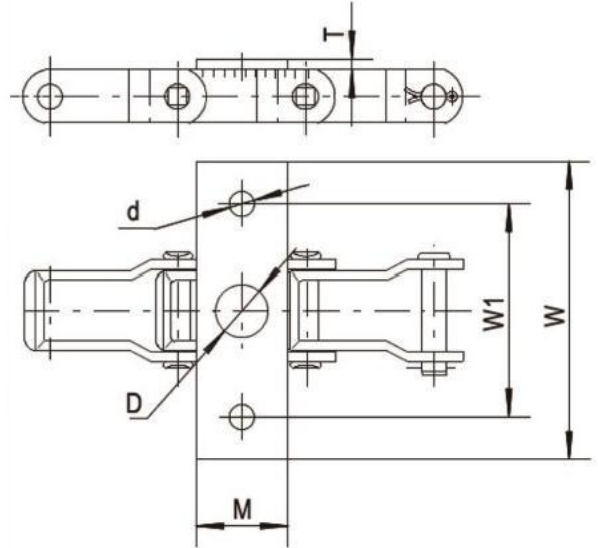
钢制销合链-附件 Steel Pintle Chains-Attachments

Att No	Chain No	W1	W	M	d	D	T
K12	667X	65.09	101.6	38.1	9.9	26.2	4.6

**K1 K1S**

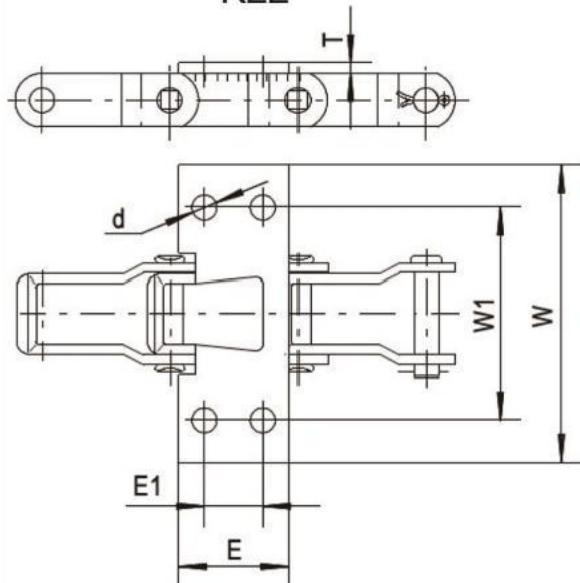


**K12**



Att No	Chain No	W1	W	E1	E	d	T
K1	88C	101.6	127	25.4	47.63	10.31	4.8
K1S	88C	95.25	127	25.4	47.63	11.5	6.4

**K22**



Att No	Chain No	W1	W	E1	E	d	T
K22	88C	135	158.8	44.45	69.85	9.9	6.4

Tianjin OuNaiDa Transmissions Technology Co., Ltd

天津欧耐达传动科技有限公司



Product Catalog

ADD: No. 10 Tengwang Road, Beichen District, Tianjin 300401

Email: [info@tjond.com](mailto:info@tjond.com)

Website : <https://www.tjond.com>