

# 天津欧耐达传动科技有限公司

## Tianjin OuNaiDa Transmissions Technology Co., Ltd.



## 企业文化 Corporate culture

### What we offer?

Custom high-precision components, integrated transmission solutions, and assembly services tailored to specific customer requirements or technical drawings.

**Our core products:** helical gears, spur gears, bevel gears, worm gears, gear racks, guide and rails, ball screws, sprockets, transmission chains, timing pulleys, CNC machined parts.

### Why choose us?

1. **Source Factory, Lower Price** – Not the cheapest, but the best value at the same quality.
2. **ISO9001:2015 & CE Certified** – Stable, reliable quality that meets international standards.
3. **Integrated Professional Team** – Covering design, R&D, production, and service. End-to-end support from concept to after-sales.
4. **Comprehensive Service System** – Reliable support before, during, and after the sale.
5. **20+ Years Manufacturing & 16 Years Export Experience** – Deeply rooted in power transmission, serving customers worldwide.
6. **OEM & ODM Available** – Flexible customization to meet your specific requirements.
7. **On-Time Delivery with Guaranteed Quality & Quantity** – Strict production management ensures orders arrive on time and in full.
8. **Long-Term & Stable Partnership** – More than a supplier, we are a reliable partner. With 20+ years of industry presence and strong risk resilience, we ensure supply stability, reduce your supply chain costs, and drive mutual growth.

# 目录页

CATALOG

## 企业介绍

### 我们提供什么？

根据客户的具体需求或技术图纸，提供定制的高精密零部件、集成式传动解决方案以及装配服务。

我们的核心产品包括：斜齿轮、直齿轮、伞齿轮、蜗轮蜗杆、齿条、导轨、滚珠丝杠、链轮、传动链、同步带轮以及 CNC 精密加工件。

### 为什么选择我们？

1. 源头工厂，价格更优 —— 并非价格最低，但在同等品质下提供最佳的性价比。
2. ISO9001:2015 与 CE 认证 —— 质量稳定可靠，符合国际标准。
3. 专业的集成化团队 —— 涵盖设计、研发、生产及服务全流程，提供从概念构思到售后支持的一站式服务。
4. 全面的服务体系 —— 提供售前、售中及售后的全方位可靠支持。
5. 20 余年制造经验，16 年出口历程 —— 深耕动力传动领域，服务全球客户。
6. 支持 OEM 与 ODM —— 提供灵活的定制服务，精准满足您的特定需求。
7. 准时交付，保质保量 —— 严格的生产管理确保订单按时、足量交付。
8. 长期稳定的合作伙伴关系 —— 我们不仅仅是供应商，更是您值得信赖的合作伙伴。凭借 20 多年的行业积淀和强大的抗风险能力，我们能确保供货的稳定性，助您降低供应链成本，实现共同成长。

### 网址

Website: <https://www.tjond.com>

# 01

## 精密齿轮 Precision gear



# 02

## 精密齿条 Precision gear rack

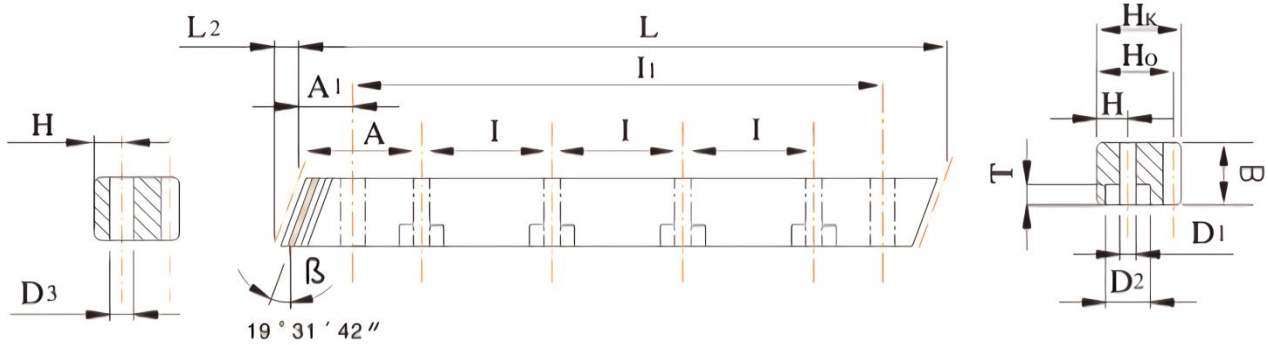


天津欧耐达传动科技有限公司

Tianjin OuNaiDa Transmissions Technology Co., Ltd.

斜齿条，右旋  $19^{\circ}31'42''$ ，磨削齿面， $20^{\circ}$ 压力角

Slant rack,  $19^{\circ}31'42''$  right-hand, Grinding tooth surface,  $20^{\circ}$  pressure angle



型号 Code	模数 Module	齿距 Pt	L	L2	齿数 Z	B	Hk	Ho	A	I	孔数 Hole No.	H	D1	D2	T	A1	I1	D3	总齿距误差 Pitch Error 300mm	M(kg)
OND2	2	6.666	500	8.5	75	24	24	22	62.5	125	4	8	7	11	7	31.7	436.6	5.7	0.022	2.1
OND2	2	6.666	1000	8.5	150	24	24	22	62.5	125	8	8	7	11	7	31.7	936.6	5.7	0.022	4.1
OND3	3	10.000	500	10.3	50	29	29	26	62.5	125	4	9	10	15	9	35.0	430.0	7.7	0.024	3
OND3	3	10.000	1000	10.3	100	29	29	26	62.5	125	8	9	10	15	9	35.0	930.0	7.7	0.024	5.9
OND4	4	13.333	506.67	13.8	38	39	39	35	62.5	125	4	12	10	15	9	33.3	433.0	7.7	0.024	5.7
OND4	4	13.333	1000	13.8	75	39	39	35	62.5	125	8	12	10	15	9	33.3	933.4	7.7	0.024	10.7
OND5	5	16.666	500	17.4	30	49	39	34	62.5	125	4	12	14	20	13	37.5	425.0	11.7	0.025	6.5
OND5	5	16.666	1000	17.4	60	49	39	34	62.5	125	8	12	14	20	13	37.5	925.0	11.7	0.025	13
OND6	6	20.000	500	20.9	25	59	49	43	62.5	125	4	16	18	26	17	37.5	425.0	15.7	0.026	10
OND6	6	20.000	1000	20.9	50	59	49	43	62.5	125	8	16	18	26	17	37.5	925.0	15.7	0.026	19.8
OND8	8	26.666	480	28.0	18	79	79	71	60.0	120	4	25	22	33	21	120.0	240.0	19.7	0.027	21.3
OND8	8	26.666	960	28.0	36	79	79	71	60.0	120	8	25	22	33	21	120.0	720.0	19.7	0.027	42.7
OND10	10	33.333	500	35.11	15	99	99	89	62.5	125	4	32	33	48	32	125.0	250.0	19.7	0.028	34
OND10	10	33.333	1000	35.11	30	99	99	89	62.5	125	8	32	33	48	32	125.0	750.0	19.7	0.028	68

精度等级: DIN6h25(JIS2级)

材料: C45

齿形: 斜齿

齿面处理: 磨削

硬度处理: 45~50度 HRC

四面磨削: 有

右旋角:  $19^{\circ}31'42''$

压力角: 20度

Precision Grade: DIN6h25(JIS2 Grade)

Material: C45

Type: Helical Rack

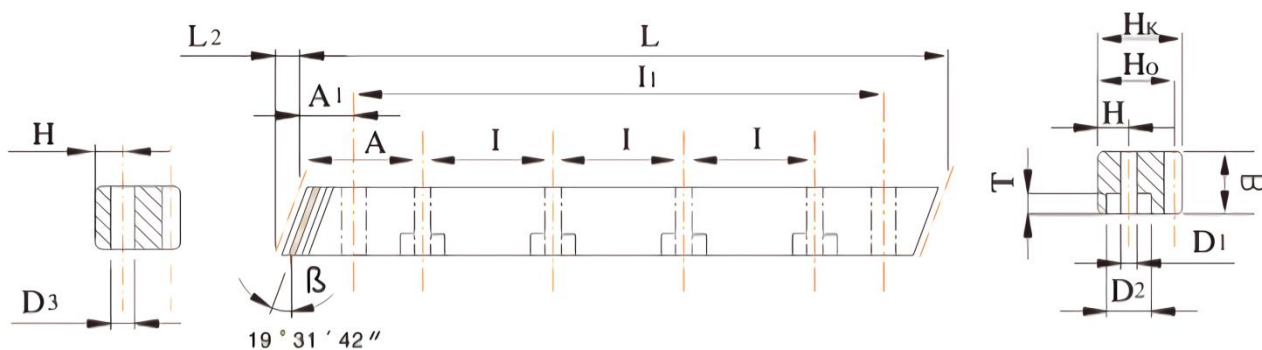
Treatment of Teeth: Ground

Hardness: 45~50 degree HRC

Sides Ground: Included.

Right Hand Angle:  $19^{\circ}31'42''$

Pressure Angle: 20 degree

斜齿条，右旋  $19^{\circ}31'42''$ ，铣削齿面， $20^{\circ}$  压力角Slant rack,  $19^{\circ}31'42''$  right-hand, milled tooth surface,  $20^{\circ}$  pressure angle

模数 Module	齿距 Pt	L	L2	齿数 Z	B	Hk	Ho	A	I	孔数 Hole No.	H	D1	D2	T	A1	I1	D3	总齿距误差 Pitch Error 300mm	M(kg)
1	3.333	505	5.32	159	15	15	14	62.5	125	4	6	5	8	5	31.7	441.6	5.7	0.037	0.8
1	3.333	999	5.32	318	15	15	14	62.5	125	8	6	5	8	5	31.7	935.6	5.7	0.037	1.6
1.5	5.000	500	6.7	100	19	19	17.5	62.5	125	4	8	7	11	7	31.7	436.6	5.7	0.040	1.6
1.5	5.000	1000	6.7	200	19	19	17.5	62.5	125	8	8	7	11	7	31.7	936.6	5.7	0.040	3.2
2	6.666	500	8.9	75	24	24	22	62.5	125	4	8	7	11	7	31.7	436.6	5.7	0.042	2.1
2	6.666	1000	8.9	150	24	24	22	62.5	125	8	8	7	11	7	31.7	936.6	5.7	0.042	4.1
3	10.000	500	10.6	50	29	29	26	62.5	125	4	9	10	15	9	35.0	430.0	7.7	0.044	3
3	10.000	1000	10.6	100	29	29	26	62.5	125	8	9	10	15	9	35.0	930.0	7.7	0.044	5.9
4	13.333	506.67	14.2	38	39	39	35	62.5	125	4	12	10	15	9	33.3	433.0	7.7	0.046	5.7
4	13.333	1000	14.2	75	39	39	35	62.5	125	8	12	10	15	9	33.3	933.4	7.7	0.046	10.7
5	16.666	500	17.4	30	49	49	34	62.5	125	4	12	14	20	13	37.5	425.0	11.7	0.047	6.5
5	16.666	1000	17.4	60	49	49	34	62.5	125	8	12	14	20	13	37.5	925.0	11.7	0.047	13
6	20.000	500	20.9	25	59	59	43	62.5	125	4	16	18	26	17	37.5	425.0	15.7	0.052	10
6	20.000	1000	20.9	50	59	59	43	62.5	125	8	16	18	26	17	37.5	925.0	15.7	0.052	19.8
8	26.666	480	28.0	18	79	79	71	60.0	120	4	25	22	33	21	120.0	240.0	19.7	0.057	21.3
8	26.666	960	28.0	36	79	79	71	60.0	120	8	25	22	33	21	120.0	720.0	19.7	0.057	42.5
10	33.333	500	35.11	30	99	99	89	62.5	125	4	32	33	48	32	125.0	250.0	19.7	0.060	34
10	33.333	1000	35.11	30	99	99	89	62.5	125	8	32	33	48	32	125.0	750.0	19.7	0.060	68

精度等级: DIN7e25(JIS3 级)

材 料: C45

齿 形: 斜齿

齿面处理: 精铣

硬度处理: 调质, 20~25 度 HRC

四面磨削: 有

右 旋 角:  $19^{\circ}31'42''$ 

压 力 角: 20 度

Precision Grade: DIN7e25(JIS3 Grade)

Material: C45

Type: Helical Rack

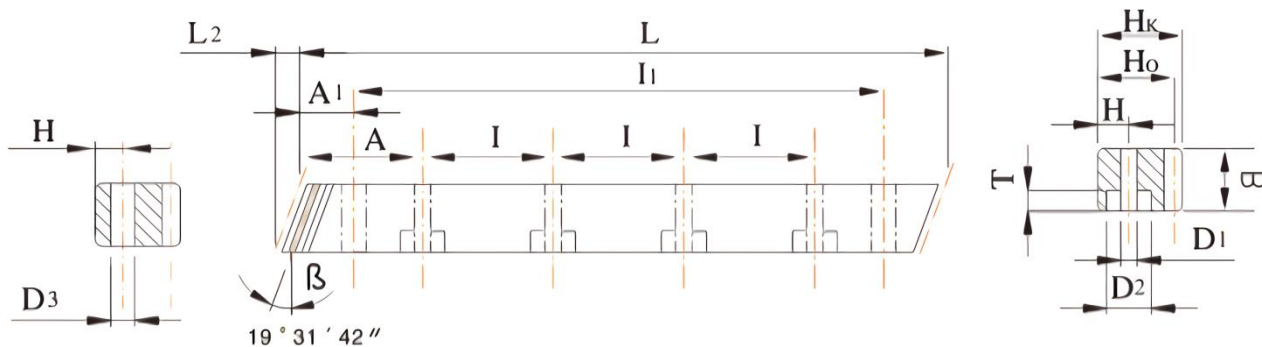
Treatment of Teeth: Milled

Hardness: Quenched, 20~25 degree HRC

Sides Ground: Included.

Right Hand Angle:  $19^{\circ}31'42''$ 

Pressure Angle: 20 degree

斜齿条，右旋  $19^{\circ}31'42''$ ，铣削齿面， $20^{\circ}$ 压力角Slant rack,  $19^{\circ}31'42''$  right-hand, milled tooth surface,  $20^{\circ}$  pressure angle

模数 Module	齿距 Pt	L	L2	齿数 Z	B	Hk	Ho	A	I	孔数 Hole No.	H	D1	D2	T	A1	I1	D3	总齿距误差 Pitch Error 300mm	M(kg)
1	3.333	505	5.32	159	15	15	14	62.5	125	4	6	5	8	5	31.7	441.6	5.7	0.039	0.8
1	3.333	999	5.32	318	15	15	14	62.5	125	8	6	5	8	5	31.7	935.6	5.7	0.039	1.6
1.5	5.000	500	6.7	100	19	19	17.5	62.5	125	4	8	7	11	7	31.7	436.6	5.7	0.042	1.6
1.5	5.000	1000	6.7	200	19	19	17.5	62.5	125	8	8	7	11	7	31.7	936.6	5.7	0.042	3.2
2	6.666	500	8.9	75	24	24	22	62.5	125	4	8	7	11	7	31.7	436.6	5.7	0.044	2.1
2	6.666	1000	8.9	150	24	24	22	62.5	125	8	8	7	11	7	31.7	936.6	5.7	0.044	4.1
3	10.000	500	10.6	50	29	29	26	62.5	125	4	9	10	15	9	35.0	430.0	7.7	0.046	3
3	10.000	1000	10.6	100	29	29	26	62.5	125	8	9	10	15	9	35.0	930.0	7.7	0.046	5.9
4	13.333	506.67	14.2	38	39	39	35	62.5	125	4	12	10	15	9	33.3	433.0	7.7	0.048	5.7
4	13.333	1000	14.2	75	39	39	35	62.5	125	8	12	10	15	9	33.3	933.4	7.7	0.048	10.7
5	16.666	500	17.4	30	49	39	34	62.5	125	4	12	14	20	13	37.5	425.0	11.7	0.050	6.5
5	16.666	1000	17.4	60	49	39	34	62.5	125	8	12	14	20	13	37.5	925.0	11.7	0.050	13
6	20.000	500	20.9	25	59	49	43	62.5	125	4	16	18	26	17	37.5	425.0	15.7	0.055	10
6	20.000	1000	20.9	50	59	49	43	62.5	125	8	16	18	26	17	37.5	925.0	15.7	0.055	19.8
8	26.666	480	28.0	18	79	79	71	60.0	120	4	25	22	33	21	120.0	240.0	19.7	0.060	21.3
8	26.666	960	28.0	36	79	79	71	60.0	120	8	25	22	33	21	120.0	720.0	19.7	0.060	42.5
10	33.333	500	35.11	30	99	99	89	62.5	125	4	32	33	48	32	125.0	250.0	19.7	0.065	34
10	33.333	1000	35.11	30	99	99	89	62.5	125	8	32	33	48	32	125.0	750.0	19.7	0.065	68

精度等级: DIN8e27(JIS4级)

材料: C45

齿形: 斜齿

齿面处理: 精铣

硬度处理: 调质, 20~25度 HRC

四面磨削: 无

右旋角:  $19^{\circ}31'42''$ 

压力角: 20度

Precision Grade: DIN8e27(JIS4Grade)

Material: C45

Type: Helical Rack

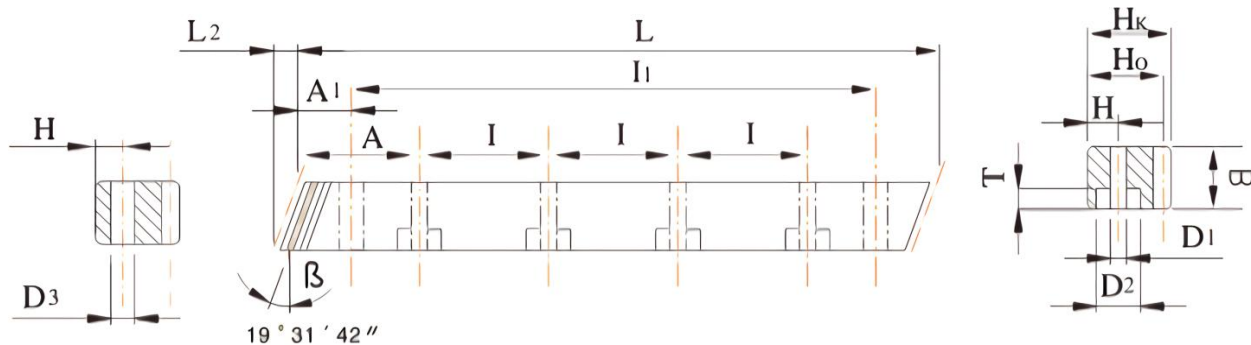
Treatment of Teeth: Milled

Hardness: Quenched, 20~25 degree HRC

Sides Ground: Not Included.

Right Hand Angle:  $19^{\circ}31'42''$ 

Pressure Angle: 20 degree

斜齿条，右旋  $19^{\circ}31'42''$ ，铣削齿面， $20^{\circ}$ 压力角Slant rack,  $19^{\circ}31'42''$  right-hand, milled tooth surface,  $20^{\circ}$  pressure angle

模数 Module	齿距 Pt	L	L2	齿数 Z	B	Hk	Ho	A	I	孔数 Hole No.	H	D1	D2	T	A1	I1	D3	总齿距误差 Pitch Error 300mm	M(kg)
1	3.333	505	5.32	159	15	15	14	62.5	125	4	6	5	8	5	31.7	441.6	5.7	0.057	0.8
1	3.333	999	5.32	318	15	15	14	62.5	125	8	6	5	8	5	31.7	935.6	5.7	0.057	1.6
1.5	5.000	500	6.7	100	19	19	17.5	62.5	125	4	8	7	11	7	31.7	436.6	5.7	0.059	1.6
1.5	5.000	1000	6.7	200	19	19	17.5	62.5	125	8	8	7	11	7	31.7	936.6	5.7	0.059	3.2
2	6.666	500	8.9	75	24	24	22	62.5	125	4	8	7	11	7	31.7	436.6	5.7	0.061	2.2
2	6.666	1000	8.9	150	24	24	22	62.5	125	8	8	7	11	7	31.7	936.6	5.7	0.061	4.4
3	10.000	500	10.6	50	29	29	26	62.5	125	4	9	10	15	9	35.0	430.0	7.7	0.065	3.1
3	10.000	1000	10.6	100	29	29	26	62.5	125	8	9	10	15	9	35.0	930.0	7.7	0.065	6.2
4	13.333	506.67	14.2	38	39	39	35	62.5	125	4	12	10	15	9	33.3	433.0	7.7	0.068	5.7
4	13.333	1000	14.2	75	39	39	35	62.5	125	8	12	10	15	9	33.3	933.4	7.7	0.068	11.1
5	16.666	500	17.4	30	49	39	34	62.5	125	4	12	14	20	13	37.5	425.0	11.7	0.070	6.5
5	16.666	1000	17.4	60	49	39	34	62.5	125	8	12	14	20	13	37.5	925.0	11.7	0.070	13.26
6	20.000	500	20.9	25	59	49	43	62.5	125	4	16	18	26	17	37.5	425.0	15.7	0.072	10.1
6	20.000	1000	20.9	50	59	49	43	62.5	125	8	16	18	26	17	37.5	925.0	15.7	0.072	20.12
8	26.666	480	28.0	18	79	79	71	60.0	120	4	25	22	33	21	120.0	240.0	19.7	0.075	22.3
8	26.666	960	28.0	36	79	79	71	60.0	120	8	25	22	33	21	120.0	720.0	19.7	0.075	44.85
10	33.333	500	35.11	30	99	99	89	62.5	125	4	32	33	48	32	125.0	250.0	19.7	0.077	34
10	33.333	1000	35.11	30	99	99	89	62.5	125	8	32	33	48	32	125.0	750.0	19.7	0.077	69.8

精度等级: DIN9e27(JIS5 级)

材 料: C45

齿 形: 斜齿

齿面处理: 精铣

硬度处理: 40~45 度 HRC

四面磨削: 有

右 旋 角:  $19^{\circ}31'42''$ 压 力 角:  $20^{\circ}$ 

Precision Grade: DIN9e27(JIS5 Grade)

Material: C45

Type: Helical Rack

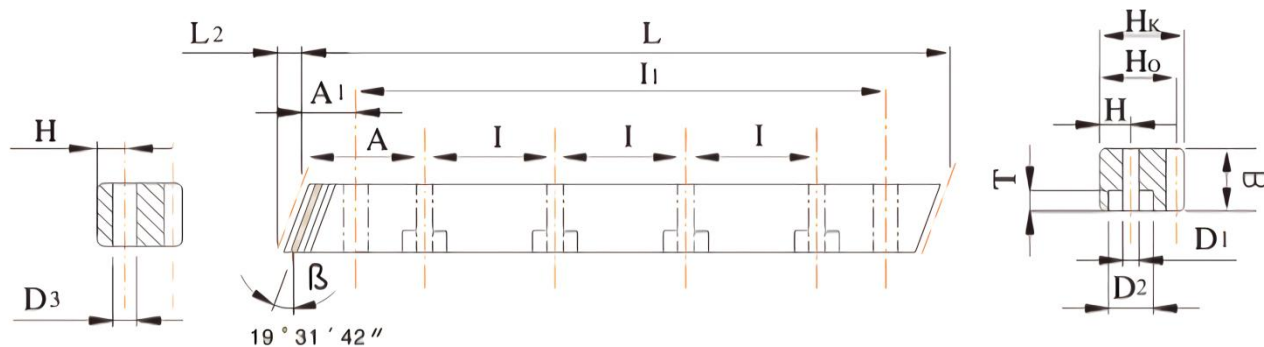
Treatment of Teeth: Milled

Hardness: 40~45 degree HRC

Sides Ground: Included.

Right Hand Angle:  $19^{\circ}31'42''$ 

Pressure Angle: 20 degree

斜齿条，右旋  $19^{\circ}31'42''$ ，铣削齿面， $20^{\circ}$ 压力角Slant rack,  $19^{\circ}31'42''$  right-hand, milled tooth surface,  $20^{\circ}$  pressure angle

模数 Module	齿距 Pt	L	L2	齿数 Z	B	Hk	Ho	A	I	孔数 Hole No.	H	D1	D2	T	A1	I1	D3	总齿距误差 Pitch Error 300mm	M(kg)
1	3.333	505	5.32	159	15	15	14	62.5	125	4	6	5	8	5	31.7	441.6	5.7	0.072	0.8
1	3.333	999	5.32	318	15	15	14	62.5	125	8	6	5	8	5	31.7	935.6	5.7	0.072	1.6
1.5	5.000	500	6.7	100	19	19	17.5	62.5	125	4	8	7	11	7	31.7	436.6	5.7	0.079	1.6
1.5	5.000	1000	6.7	200	19	19	17.5	62.5	125	8	8	7	11	7	31.7	936.6	5.7	0.079	3.2
2	6.666	500	8.9	75	24	24	22	62.5	125	4	8	7	11	7	31.7	436.6	5.7	0.086	2.1
2	6.666	1000	8.9	150	24	24	22	62.5	125	8	8	7	11	7	31.7	936.6	5.7	0.086	4.1
3	10.000	500	10.6	50	29	29	26	62.5	125	4	9	10	15	9	35.0	430.0	7.7	0.091	3
3	10.000	1000	10.6	100	29	29	26	62.5	125	8	9	10	15	9	35.0	930.0	7.7	0.091	5.9
4	13.333	506.67	14.2	38	39	39	35	62.5	125	4	12	10	15	9	33.3	433.0	7.7	0.095	5.7
4	13.333	1000	14.2	75	39	39	35	62.5	125	8	12	10	15	9	33.3	933.4	7.7	0.095	10.7
5	16.666	500	17.4	30	49	39	34	62.5	125	4	12	14	20	13	37.5	425.0	11.7	0.098	6.5
5	16.666	1000	17.4	60	49	39	34	62.5	125	8	12	14	20	13	37.5	925.0	11.7	0.098	13
6	20.000	500	20.9	25	59	49	43	62.5	125	4	16	18	26	17	37.5	425.0	15.7	0.100	10
6	20.000	1000	20.9	50	59	49	43	62.5	125	8	16	18	26	17	37.5	925.0	15.7	0.100	19.8
8	26.666	480	28.0	18	79	79	71	60.0	120	4	25	22	33	21	120.0	240.0	19.7	0.105	21.3
8	26.666	960	28.0	36	79	79	71	60.0	120	8	25	22	33	21	120.0	720.0	19.7	0.105	42.5
10	33.333	500	35.11	30	99	99	89	62.5	125	4	32	33	48	32	125.0	250.0	19.7	0.110	34
10	33.333	1000	35.11	30	99	99	89	62.5	125	8	32	33	48	32	125.0	750.0	19.7	0.110	68

精度等级: DIN10e27(JIS6 级)

材 料: C45

齿 形: 斜齿

齿面处理: 精铣

硬度处理: 40~45 度 HRC

四面磨削: 无

右 旋 角:  $19^{\circ}31'42''$ 压 力 角:  $20^{\circ}$ 

Precision Grade: DIN10e27(JIS6 Grade)

Material: C45

Type: Helical Rack

Treatment of Teeth: Milled

Hardness: 40~45 degree HRC

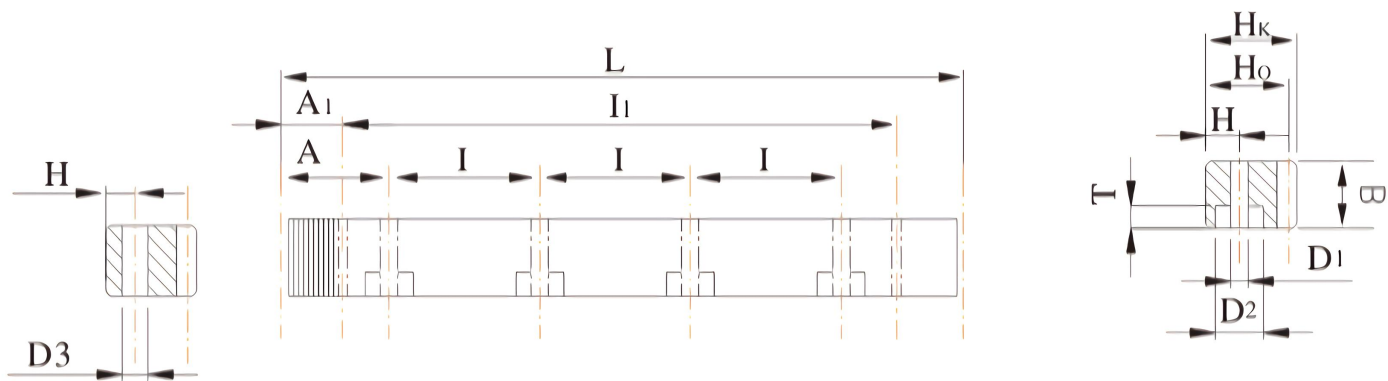
Sides Ground: Not Included.

Right Hand Angle:  $19^{\circ}31'42''$ 

Pressure Angle: 20 degree

直齿条，磨削齿面，20°压力角

Straight tooth system, Grinding tooth surface, 20° pressure angle



模数 Module	齿距 P	L	齿数 Z	B	Hk	Ho	A	I	孔数 Hole No.	H	D1	D2	T	A1	I1	D3	总齿距误差 Pitch Error 300mm	M(kg)
2	6.283	502.65	80	24	24	22	62.8	125.66	4	8	7	11	7	31.3	440.1	5.7	0.022	2.1
2	6.283	1005.30	160	24	24	22	62.8	125.66	8	8	7	11	7	31.3	942.7	5.7	0.022	4.2
3	9.425	508.90	54	29	29	26	63.6	127.23	4	9	10	15	9	34.4	440.1	7.7	0.024	3
3	9.425	1017.90	108	29	29	26	63.6	127.23	8	9	10	15	9	34.4	949.1	7.7	0.024	6
4	12.566	502.60	40	39	39	35	62.8	125.66	4	12	10	15	9	37.5	427.7	7.7	0.024	5.3
4	12.566	1005.30	80	39	39	35	62.8	125.66	8	12	10	15	9	37.5	930.3	7.7	0.024	10.6
5	15.708	502.60	32	49	39	34	62.8	125.66	4	12	14	20	13	30.1	442.4	11.7	0.025	6.7
5	15.708	1005.30	64	49	39	34	62.8	125.66	8	12	14	20	13	30.1	945.0	11.7	0.025	13.4
6	18.850	508.90	27	59	49	43	63.6	127.23	4	16	18	26	17	31.4	446.1	15.7	0.026	10.3
6	18.850	1017.80	54	59	49	43	63.6	127.23	8	16	18	26	17	31.4	955.1	15.7	0.026	20.5
8	25.133	502.65	20	79	79	71	62.8	125.66	4	25	22	33	21	26.6	449.45	19.7	0.027	22.1
8	25.133	1005.31	40	79	79	71	62.8	125.66	8	25	22	33	21	26.6	952.0	19.7	0.027	44.3
10	31.415	502.65	16	99	99	89	62.8	125.66	4	32	48	48	32	125.66	252.3	19.7	0.028	34.8
10	31.415	1005.31	32	99	99	89	62.8	125.66	8	32	48	48	32	125.66	753.9	19.7	0.028	69.5

精度等级: DIN6h25(JIS2 级)

材 料: C45

齿 形: 直齿

齿面处理: 磨削

硬度处理:40~45 度 HRC

四面磨削: 有

压 力 角: 20 度

Precision Grade:DIN6h25(JIS2Grade)

Material:C45

Type:Straight Rack

Treatment of Teeth:Ground

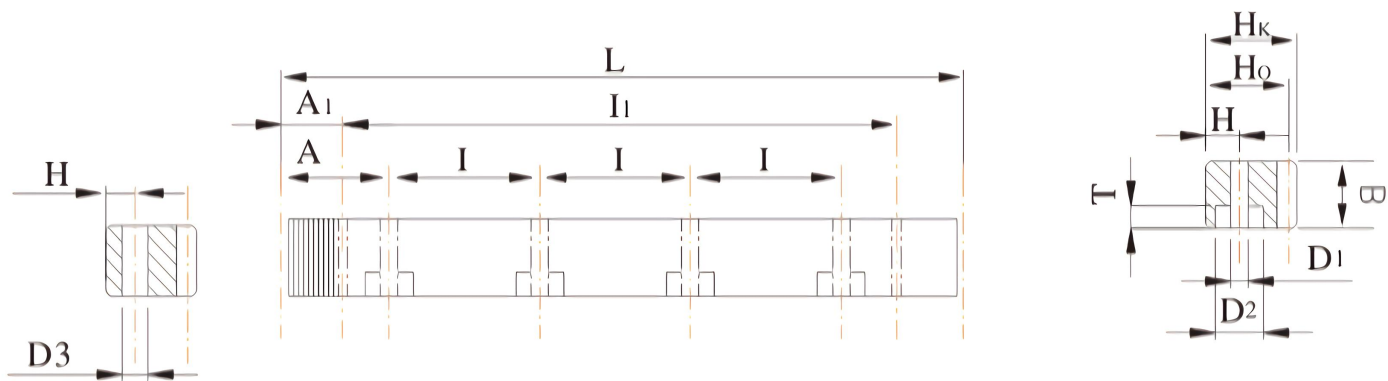
Hardness:40~45degree HRC

Sides Ground:Included.

Pressure Angle:20 degree

直齿条，铣削齿面，20°压力角

Straight tooth system, Milled tooth surface, 20° pressure angle



模数 Module	齿距 P	L	齿数 Z	B	Hk	Ho	A	I	孔数 Hole No.	H	D1	D2	T	A1	I1	D3	总齿距误差 Pitch Error 300mm	M(kg)
1	3.141	499.51	159	15	15	14	62.4	124.88	4	6	5	8	5	29.0	441.5	5.7	0.037	0.8
1	3.141	999.03	318	15	15	14	62.4	124.88	8	6	5	8	5	29.0	941.0	5.7	0.037	1.6
1.5	4.712	499.51	106	19	19	17.5	62.4	124.88	4	8	7	11	7	29.0	441.5	5.7	0.040	1.10
1.5	4.712	999.03	212	19	19	17.5	62.4	124.88	8	8	7	11	7	29.0	941.0	5.7	0.040	2.20
2	6.283	502.65	80	24	24	22	62.8	125.66	4	8	7	11	7	31.3	440.1	5.7	0.042	2.1
2	6.283	1005.31	160	24	24	22	62.8	125.66	8	8	7	11	7	31.3	942.7	5.7	0.042	4.3
3	9.425	508.94	54	29	29	26	63.6	127.23	4	9	10	15	9	34.4	440.1	7.7	0.044	3.0
3	9.425	1017.88	108	29	29	26	63.6	127.23	8	9	10	15	9	34.4	949.1	7.7	0.044	6.0
4	12.566	502.65	40	39	39	35	62.8	125.66	4	12	10	15	9	37.5	427.7	7.7	0.046	5.2
4	12.566	1005.30	80	39	39	35	62.8	125.66	8	12	10	15	9	37.5	930.3	7.7	0.046	10.5
5	15.708	502.60	32	49	39	34	62.8	125.66	4	12	14	20	13	30.1	442.4	11.7	0.047	6.7
5	15.708	1005.30	64	49	39	34	62.8	125.66	8	12	14	20	13	30.1	945.0	11.7	0.047	13.4
6	18.850	509.94	27	59	49	45.3	63.6	127.23	4	16	18	26	17	31.4	446.1	15.7	0.052	10.4
6	18.850	1017.88	54	59	49	43	63.6	127.23	8	16	18	26	17	31.4	955.0	15.7	0.052	20.2
8	25.133	502.65	20	79	79	71	62.8	125.66	4	25	22	33	21	26.6	449.45	19.7	0.057	22.3
8	25.133	1005.31	40	79	79	71	62.8	125.66	8	25	22	33	21	26.6	952.0	19.7	0.057	44.7
10	31.415	502.65	16	99	99	89	62.8	125.66	4	32	33	48	32	125.66	252.3	19.7	0.060	34.8
10	31.415	1005.31	32	99	99	89	62.8	125.66	8	32	33	48	32	125.66	753.9	19.7	0.060	68.7

精度等级: DIN7e25(JIS3级)

材料: C45

齿形: 直齿

齿面处理: 精铣

硬度处理: 40~45度 HRC

四面磨削: 有

压力角: 20度

Precision Grade: DIN7e25(JIS3Grade)

Material: C45

Type: Straight Rack

Treatment of Teeth: Milled

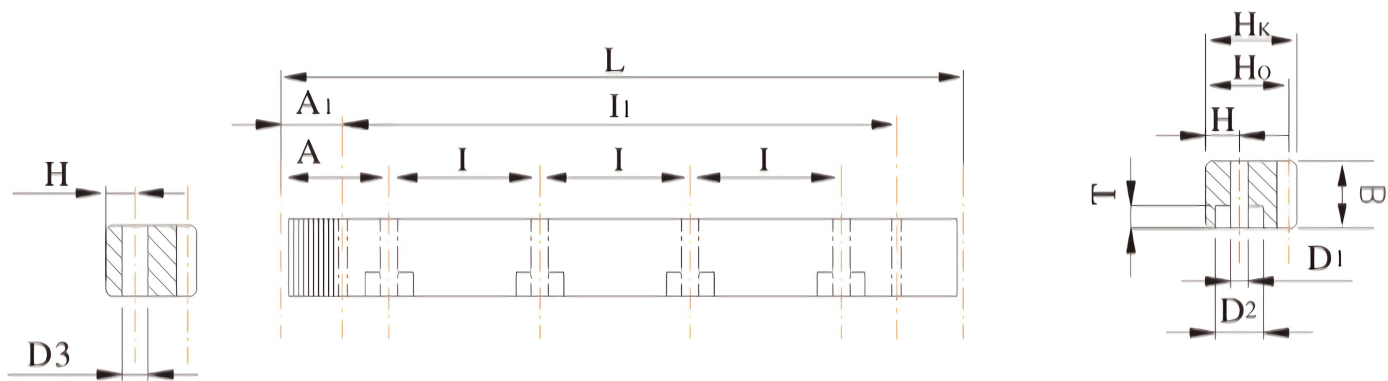
Hardness: 40~45 degree HRC

Sides Ground: Included.

Pressure Angle: 20 degree

直齿条，铣削齿面，20°压力角

Straight tooth system, Milled tooth surface, 20° pressure angle



模数 Module	齿距 P	L	齿数 Z	B	Hk	Ho	A	I	孔数 Hole No.	H	D1	D2	T	A1	I1	D3	总齿距误差 Pitch Error 300mm	M(kg)
1	3.141	499.51	159	15	15	14	62.4	124.88	4	6	5	8	5	29.0	441.5	5.7	0.039	0.8
1	3.141	999.03	318	15	15	14	62.4	124.88	8	6	5	8	5	29.0	941.0	5.7	0.039	1.6
1.5	4.712	499.51	106	19	19	17.5	62.4	124.88	4	8	7	11	7	29.0	441.5	5.7	0.042	1.10
1.5	4.712	999.03	212	19	19	17.5	62.4	124.88	8	8	7	11	7	29.0	941.0	5.7	0.042	2.20
2	6.283	502.65	80	24	24	22	62.8	125.66	4	8	7	11	7	31.3	440.1	5.7	0.044	2.1
2	6.283	1005.31	160	24	24	22	62.8	125.66	8	8	7	11	7	31.3	942.7	5.7	0.044	4.3
3	9.425	508.94	54	29	29	26	63.6	127.23	4	9	10	15	9	34.4	440.1	7.7	0.046	3.0
3	9.425	1017.88	108	29	29	26	63.6	127.23	8	9	10	15	9	34.4	949.1	7.7	0.046	6.0
4	12.566	502.65	40	39	39	35	62.8	125.66	4	12	10	15	9	37.5	427.7	7.7	0.048	5.2
4	12.566	1005.30	80	39	39	35	62.8	125.66	8	12	10	15	9	37.5	930.3	7.7	0.048	10.5
5	15.708	502.60	32	49	39	34	62.8	125.66	4	12	14	20	13	30.1	442.4	11.7	0.050	6.7
5	15.708	1005.30	64	49	39	34	62.8	125.66	8	12	14	20	13	30.1	945.0	11.7	0.050	13.4
6	18.850	509.94	27	59	49	45.3	63.6	127.23	4	16	18	26	17	31.4	446.1	15.7	0.055	10.4
6	18.850	1017.88	54	59	49	43	63.6	127.23	8	16	18	26	17	31.4	955.0	15.7	0.055	20.2
8	25.133	502.65	20	79	79	71	62.8	125.66	4	25	22	33	21	26.6	449.45	19.7	0.060	22.3
8	25.133	1005.31	40	79	79	71	62.8	125.66	8	25	22	33	21	26.6	952.0	19.7	0.060	44.7
10	31.415	502.65	16	99	99	89	62.8	125.66	4	32	33	48	32	125.66	252.3	19.7	0.065	34.8
10	31.415	1005.31	32	99	99	89	62.8	125.66	8	32	33	48	32	125.66	753.9	19.7	0.065	68.7

精度等级: DIN8e27(JIS4 级)

材 料: C45

齿 形: 直齿

齿面处理: 精铣

硬度处理: 调质, 20~25 度 HRC

四面磨削: 无

压 力 角: 20 度

Precision Grade: DIN8e27(JIS4 Grade)

Material: C45

Type: Straight Rack

Treatment of Teeth: Milled

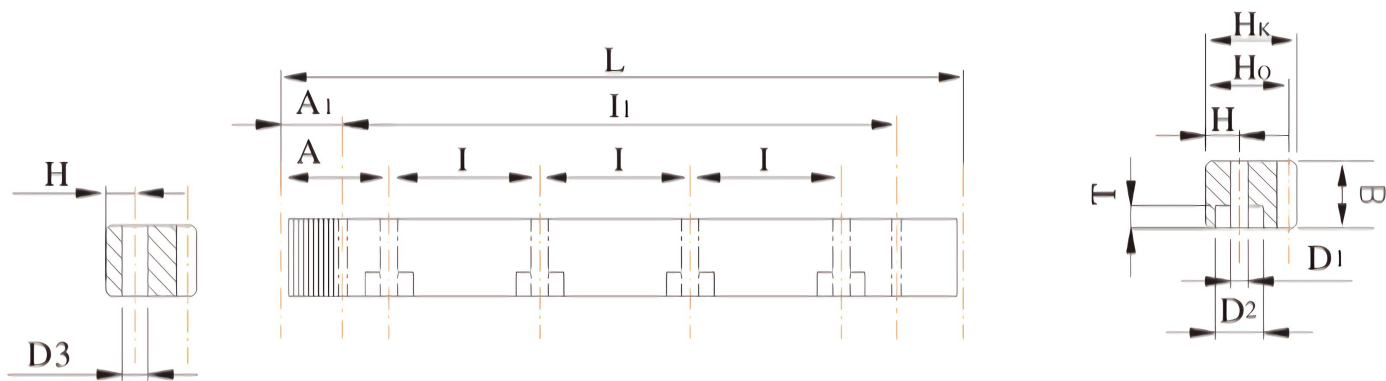
Hardness: Quenched, 20~25 degree HRC

Sides Ground: Not Included.

Pressure Angle: 20 degree

直齿条，铣削齿面，20°压力角

Straight tooth system, Milled tooth surface, 20° pressure angle



模数 Module	齿距 P	L	齿数 Z	B	Hk	Ho	A	I	孔数 Hole No.	H	D1	D2	T	A1	I1	D3	总齿距误差 Pitch Error 300mm	M(kg)
1	3.141	499.51	159	15	15	14	62.4	124.88	4	6	5	8	5	29.0	441.5	5.7	0.057	0.8
1	3.141	999.03	318	15	15	14	62.4	124.88	8	6	5	8	5	29.0	941.0	5.7	0.057	1.6
1.5	4.712	499.51	106	17	17	15.5	62.4	124.88	4	6	5	8	5	29.0	441.5	5.7	0.059	1.1
1.5	4.712	999.03	212	17	17	15.5	62.4	124.88	8	6	5	8	5	29.0	941.0	5.7	0.059	2.2
2	6.283	502.65	80	20	20	18	62.8	125.66	4	8	7	11	7	31.3	440.1	5.7	0.061	1.41
2	6.283	1005.31	160	20	20	18	62.8	125.66	8	8	7	11	7	31.3	942.7	5.7	0.061	2.81
2.5	7.854	502.65	64	25	25	22.5	62.8	125.66	4	8	7	11	7	31.3	440.1	5.7	0.063	2.21
2.5	7.854	1005.31	128	25	25	22.5	62.8	125.66	8	8	7	11	7	31.3	942.7	5.7	0.063	4.42
3	9.425	508.94	54	30	30	27	63.6	127.23	4	9	10	15	9	34.4	440.1	7.7	0.065	3.22
3	9.425	1017.88	108	30	30	27	63.6	127.23	8	9	10	15	9	34.4	949.1	7.7	0.065	6.44
4	12.566	502.65	40	40	40	36	62.8	125.66	4	12	10	15	9	37.5	427.7	7.7	0.068	5.65
4	12.566	1005.30	80	40	40	36	62.8	125.66	8	12	10	15	9	37.5	930.3	7.7	0.068	11.31
5	15.708	502.60	32	50	50	45	62.8	125.66	4	12	14	20	13	30.1	442.4	11.7	0.070	6.87
5	15.708	1005.3	64	50	50	45	62.8	125.66	8	12	14	20	13	30.1	945.0	11.7	0.070	13.74
6	18.850	508.94	27	60	60	54	63.6	127.23	4	16	18	26	17	31.4	446.1	15.7	0.072	10.49
6	18.850	1017.88	64	60	60	54	63.6	127.23	8	16	18	26	17	31.4	955.0	15.7	0.072	20.99
8	25.133	502.65	20	80	79.5	71.5	62.8	125.66	4	25	22	33	21	26.6	449.45	19.7	0.075	22.3
8	25.133	1005.31	40	80	79.5	71.5	62.8	125.66	8	25	22	33	21	26.6	952.0	19.7	0.075	44.6
10	31.415	502.65	16	100	100	90	62.8	125.66	4	32	33	48	32	125.66	252.3	19.7	0.077	35.5
10	31.415	1005.31	32	100	100	90	62.8	125.66	8	32	33	48	32	125.66	753.9	19.7	0.077	70.6

精度等级: DIN9e27(JIS5 级)

材 料: C45

齿 形: 直齿

齿面处理: 精铣

硬度处理: 20~25 度 HRC

四面磨削: 有

压 力 角: 20 度

Precision Grade: DIN9e27(JIS5 Grade)

Material: C45

Type: Straight Rack

Treatment of Teeth: Milled

Hardness: 20~25 degree HRC

Sides Ground: Included.

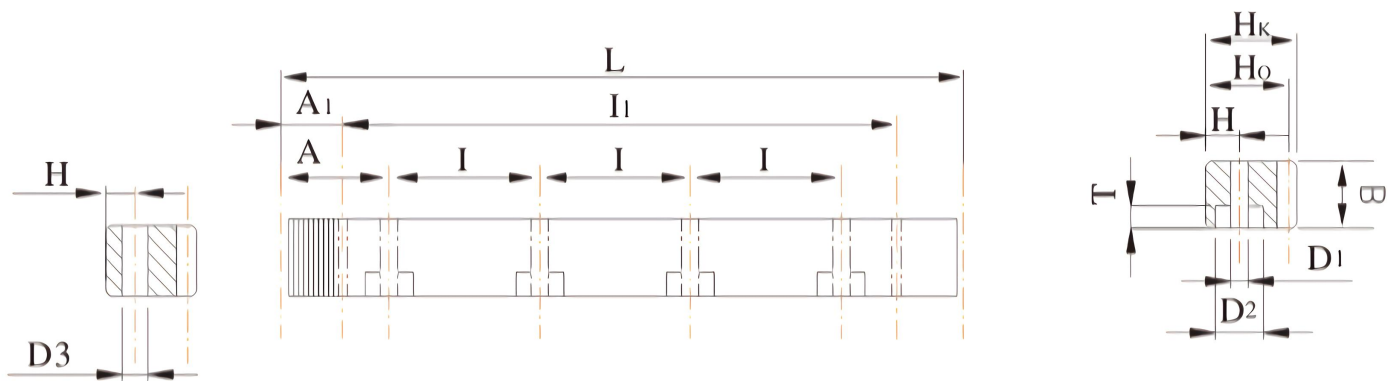
Pressure Angle: 20 degree

天津欧耐达传动科技有限公司

Tianjin OuNaiDa Transmissions Technology Co., Ltd.

直齿条，铣削齿面，20°压力角

Straight tooth system, Milled tooth surface, 20° pressure angle



模数 Module	齿距 P	L	齿数 Z	B	Hk	Ho	A	I	孔数 Hole No.	H	D1	D2	T	A1	I1	D3	总齿距误差 Pitch Error 300mm	M(kg)
1	3.1.1	499.51	159	15	15	14	62.4	124.88	4	6	5	8	5	29.0	441.5	5.7	0.072	0.8
1	3.141	999.03	318	15	15	14	62.4	124.88	8	6	5	8	5	29.0	941.0	5.7	0.072	1.6
1.5	4.712	499.51	106	19	19	17.5	62.4	124.88	4	8	7	11	7	29.0	441.5	5.7	0.079	1.1
1.5	4.712	999.03	212	19	19	17.5	62.4	124.88	8	8	7	11	7	29.0	941.0	5.7	0.079	2.2
2	6.283	502.65	80	24	24	22	62.8	125.66	4	8	7	11	7	31.3	440.1	5.7	0.086	2.1
2	6.283	1005.31	160	24	24	22	62.8	125.66	8	8	7	11	7	31.3	942.7	5.7	0.086	4.3
3	9.425	508.94	54	29	29	26	63.6	127.23	4	9	10	15	9	34.4	440.1	7.7	0.091	3
3	9.425	1017.88	108	29	29	26	63.6	127.23	8	9	10	15	9	34.4	949.1	7.7	0.091	6
4	12.566	502.65	40	39	39	35	62.8	125.66	4	12	10	15	9	37.5	427.7	7.7	0.095	5.2
4	12.566	1005.30	80	39	39	35	62.8	125.66	8	12	10	15	9	37.5	930.3	7.7	0.095	10.5
5	15.708	502.61	32	49	39	34	62.8	125.66	4	12	14	20	13	30.1	442.4	11.7	0.098	6.7
5	15.708	1005.3	64	49	39	34	62.8	125.66	8	12	14	20	13	30.1	945.0	11.7	0.098	13.4
6	18.850	508.94	27	59	49	43	63.6	127.23	4	16	18	26	17	31.4	446.1	15.7	1.100	10.4
6	18.850	1017.88	54	59	49	43	63.6	127.23	8	16	18	26	17	31.4	955.0	15.7	1.100	20.2
8	25.133	502.65	20	79	79	71	62.8	125.66	4	25	22	33	21	26.6	449.45	19.7	0.105	22.3
8	25.133	1005.31	40	79	79	71	62.8	125.66	8	25	22	33	21	26.6	952.0	19.7	0.105	44.7
10	31.415	502.65	16	99	99	89	62.8	125.66	4	32	33	48	32	125.66	252.3	19.7	0.110	34.8
10	31.415	1005.31	32	99	99	89	62.8	125.66	8	32	33	48	32	125.66	753.9	19.7	0.110	68.7

精度等级: DIN10e27(JIS6 级)

材 料: C45

齿 形: 直齿

齿面处理: 精铣

硬度处理:HRC40~45

四面磨削: 无

压 力 角: 20 度

Precision Grade:DIN10e27(JIS6Grade)

Material:C45

Type:Straight Rack

Treatment of Teeth:Milled

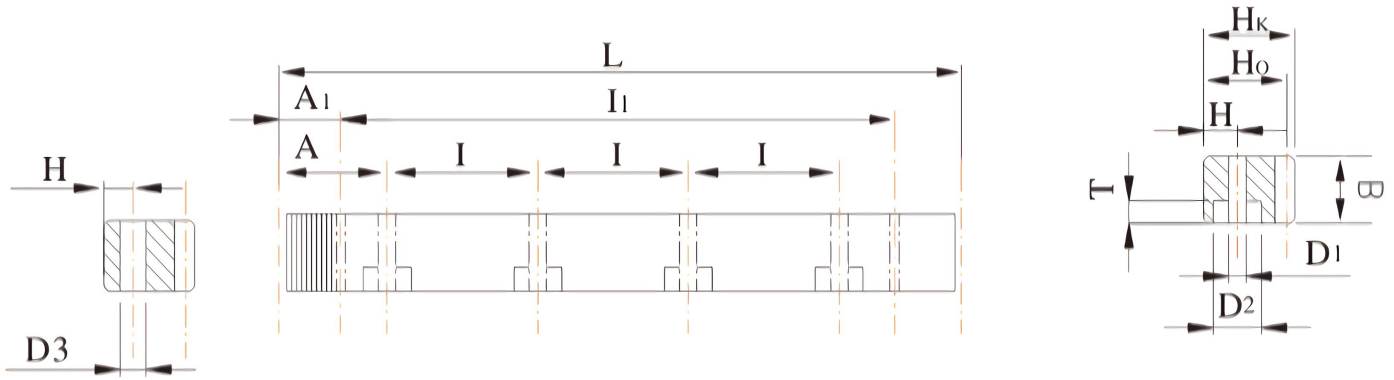
Hardness:40~45 degree HRC

Sides Ground:Not Included.

Pressure Angle:20 degree

直齿条, 磨削齿面, 20°压力角

Straight tooth system, Grinding tooth surface, 20° pressure angle.



模数 Module	齿距 P	L	齿数 Z	B	Hk	Ho	A	I	孔数 Hole No.	H	D1	D2	T	A1	I1	D3	总齿距误差 Pitch Error 300mm	M(kg)
1.591	5	500	100	20	20	18.41	62.5	125	4	8	7	11	7	35	430	5.7	0.022	1.2
1.591	5	1000	200	20	20	18.41	62.5	125	8	8	7	11	7	35	930	5.7	0.022	2.4
2.546	8	504	63	25	25	22.46	64.5	125	4	12	7	11	7	35	434	5.7	0.024	2.3
2.546	8	1008	126	25	25	22.46	64.5	125	8	12	7	11	7	35	938	5.7	0.024	4.6
3.183	10	500	50	30	30	26.81	62.5	125	4	12	10	15	9	35	430	7.7	0.024	3.2
3.183	10	1000	100	30	30	26.81	62.5	125	8	12	10	15	9	35	930	7.7	0.024	6.4
3.819	12	504	42	40	40	36.194	64.5	125	4	18	10	15	9	35	343	7.7	0.024	5.8
3.819	12	1008	84	40	40	36.19	64.5	125	8	18	10	15	9	35	938	7.7	0.024	11.4
5.092	16	496	31	50	50	44.91	64.5	125	4	22	14	20	13	35	426	11.1	0.025	8.2
5.092	16	1008	63	50	50	44.91	64.5	125	8	22	14	20	13	35	938	11.1	0.025	16.5
6.366	20	500	25	60	60	53.64	62.5	125	4	26	18	26	17	35	430	15.7	0.026	12
6.366	20	1000	50	60	60	53.64	62.5	125	8	26	18	26	17	35	930	15.7	0.026	25
7.957	25	500	20	80	80	72.05	62.5	125	4	36	22	33	21	120	260	19.7	0.027	23.0
7.957	25	1000	40	80	80	72.05	62.5	125	8	36	22	33	21	120	760	19.7	0.027	46.5

精度等级: DIN6h25(JIS2 级)

材 料: C45

齿 形: 直齿

齿面处理: 磨削

硬度处理:HRC45~50

四面磨削: 有

压力角: 20度

Precision Grade:DIN6h25(JIS2Grade)

Material:C45

Type:Straight Rack

Treatment of Teeth:Ground

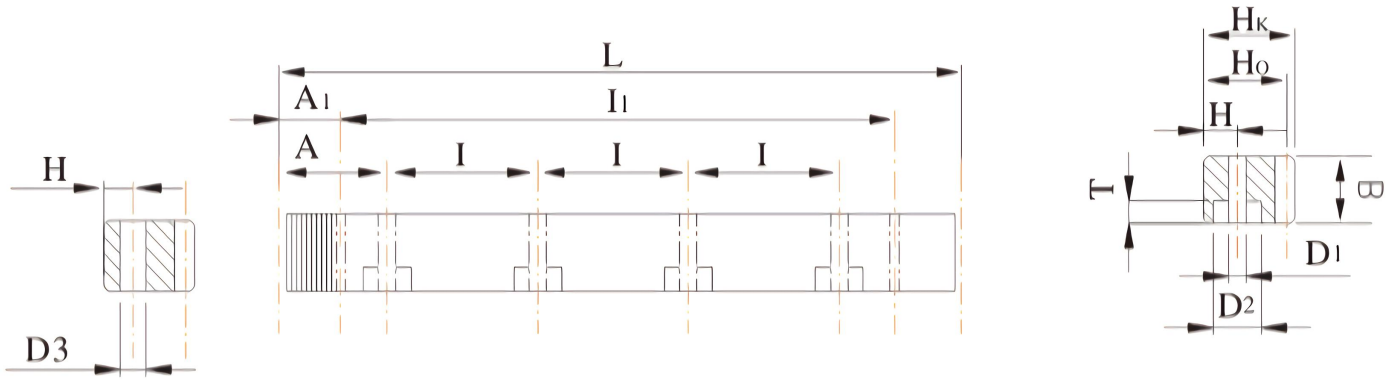
Hardness:45~50degree HRC

Sides Ground:Included.

Pressure Angle:20 degree

直齿条, 铣削齿面, 20°压力角

Straight tooth system, Milled tooth surface, 20° pressure angle



模数 Module	齿距 P	L	齿数 Z	B	Hk	Ho	A	I	孔数 Hole No.	H	D1	D2	T	A1	I1	D3	总齿距误差 Pitch Error 300mm	M(kg)
1.591	5	500	100	20	20	18.41	62.5	125	4	8	7	11	7	35	430	5.7	0.044	1.2
1.591	5	1000	200	20	20	18.41	62.5	125	8	8	7	11	7	35	930	5.7	0.044	2.4
2.546	8	504	63	25	25	22.46	64.5	125	4	12	7	11	7	35	434	5.7	0.048	2.3
2.546	8	1008	126	25	25	22.46	64.5	125	8	12	7	11	7	35	938	5.7	0.048	4.6
3.183	10	500	50	30	30	26.81	62.5	125	4	12	10	15	9	35	430	7.7	0.048	3.2
3.183	10	1000	100	30	30	26.81	62.5	125	8	12	10	15	9	35	930	7.7	0.048	6.4
3.819	12	504	42	40	40	36.194	64.5	125	4	18	10	15	9	35	343	7.7	0.048	5.8
3.819	12	1008	84	40	40	36.19	64.5	125	8	18	10	15	9	35	938	7.7	0.048	11.4
5.092	16	496	31	50	50	44.91	64.5	125	4	22	14	20	13	35	426	11.1	0.050	8.2
5.092	16	1008	63	50	50	44.91	64.5	125	8	22	14	20	13	35	938	11.1	0.050	16.5
6.366	20	500	25	60	60	53.64	62.5	125	4	26	18	26	17	35	430	15.7	0.052	12
6.366	20	1000	50	60	60	53.64	62.5	125	8	26	18	26	17	35	930	15.7	0.052	25
7.957	25	500	20	80	80	72.05	62.5	125	4	36	22	33	21	120	260	19.7	0.054	23.0
7.957	25	1000	40	80	80	72.05	62.5	125	8	36	22	33	21	120	760	19.7	0.054	46.5

精度等级: DIN7e25(JIS3 级)

材 料: C45

齿 形: 直齿

齿面处理: 精铣

硬度处理: 调质, 20~25 度 HRC

四面磨削: 有

压力角: 20 度

Precision Grade: DIN7e25(JIS3 Grade)

Material: C45

Type: Straight Rack

Treatment of Teeth: Milled

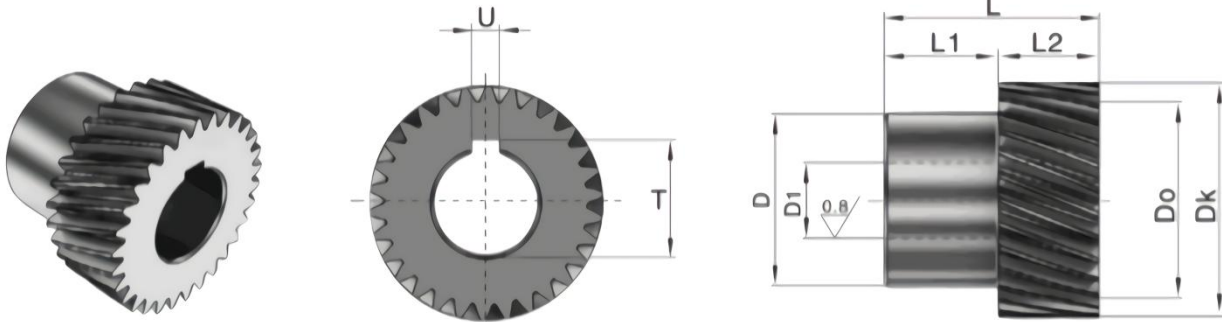
Hardness: Quenched, 20~25 degree HRC

Sides Ground: Included.

Pressure Angle: 20 degree

斜齿齿轮, 左旋 19°31'42", 磨削齿轮, 20°压力角

Helical gear, 19°31'42" left-hand, Grinding gear, 20° pressure angle



齿距 Pt	模数 Module	齿数 Z	D1	Dk	D0	D	L	L1	L2	T	U	侧隙 (mm)
3.333	1	20	12	23.22	21.22	20	20	5	15	13.8	4	0.08~0.16
3.333	1	25	12	28.53	26.53	20	20	5	15	13.8	4	0.08~0.16
3.333	1	30	15	33.83	31.83	30	20	5	15	16.8	4	0.08~0.16
3.333	1	35	15	39.14	37.14	35	20	5	15	17.3	5	0.08~0.16
5.000	1.5	21	16	36.42	33.423	30	46	26	20	18.3	5	0.08~0.16
5.000	1.5	30	22	50.75	47.747	36	48	28	20	24.8	6	0.08~0.16
5.000	1.5	39	22	65.07	62.071	36	48	28	20	24.8	6	0.10~0.18
6.666	2	21	22	48.56	44.563	36	56	28	28	24.8	6	0.10~0.20
6.666	2	30	22	67.66	63.662	36	56	28	28	24.8	6	0.12~0.22
6.666	2	30	32	67.66	63.662	55	65	37	28	35.3	10	0.12~0.22
6.666	2	39	32	86.76	82.761	55	65	37	28	35.3	10	0.12~0.22
8.333	2.5	20	22	58.05	53.052	36	56	28	28	24.8	6	0.10~0.20
8.333	2.5	25	22	71.31	66.315	36	56	28	28	24.8	6	0.12~0.22
8.333	2.5	25	32	71.31	66.315	55	65	37	28	35.3	10	0.12~0.22
10.000	3	20	22	69.66	63.662	36	56	28	28	24.8	6	0.12~0.22
10.000	3	20	32	69.66	63.662	55	65	37	28	35.3	10	0.12~0.22
10.000	3	25	22	85.58	79.578	36	56	28	28	24.8	6	0.12~0.22
10.000	3	25	32	85.58	79.578	55	65	37	28	35.3	10	0.12~0.22
13.333	4	18	32	84.39	76.394	55	75	35	40	35.3	10	0.14~0.24
13.333	4	21	32	97.13	89.127	55	75	35	40	35.3	10	0.14~0.24
13.333	4	21	35	97.13	89.127	55	75	35	40	38.3	10	0.14~0.24
13.333	4	24	32	109.86	101.859	55	75	35	40	35.3	10	0.14~0.24
13.333	4	24	35	109.86	101.859	55	75	35	40	38.3	10	0.14~0.24
16.666	5	18	45	105.49	95.483	68	85	35	50	48.8	14	0.14~0.24
16.666	5	24	45	137.32	127.324	68	85	35	50	48.8	14	0.16~0.26
16.666	6	20	55	139.32	127.324	80	100	40	60	59.3	16	0.16~0.26
16.666	6	25	75	171.16	159.155	110	120	60	60	79.9	20	0.16~0.26
26.666	8	18	75	168.79	152.789	110	140	60	80	79.9	20	0.18~0.28

精度等级: DIN6h25(JIS2 级)

材 料: 42Cr(SCM420)

齿 形: 斜齿

齿面处理: 磨削

硬度处理: 55~60 度 HRC

左旋角: 19°31'42"

压 力 角: 20 度

Precision Grade: DIN6h25(JIS2 Grade)

Material: 42Cr(SCM420)

Type: Helical Rack

Treatment of Teeth: Ground

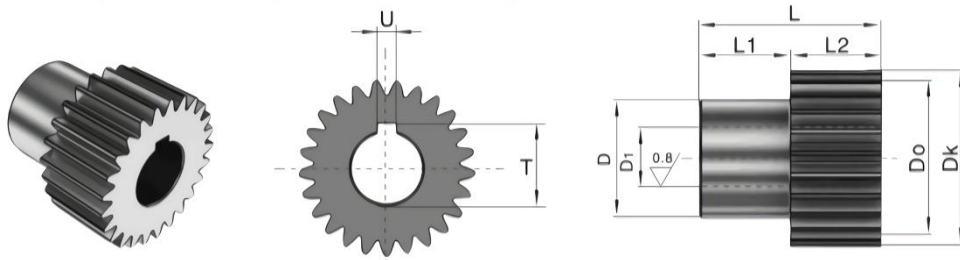
Hardness: 55~60 degree HRC

Left Hand Angle: 19°31'42"

Pressure Angle: 20 degree

直齿齿轮, 磨削齿轮, 20°压力角

Spur gear, Grinding gear, 20° pressure angle



齿距 Pt	模数 Module	齿数 Z	D1	Dk	D0	D	L	L1	L2	T	U	侧隙 (mm)
3.141	1	20	12	22	20	20	20	5	15	13.8	4	0.08~0.16
3.141	1	25	12	27	25	20	20	5	15	13.8	4	0.08~0.16
3.141	1	30	15	42	40	30	20	5	15	16.8	4	0.08~0.16
3.141	1	35	15	30	37	35	20	5	15	17.3	5	0.08~0.16
4.712	1.5	25	16	40.5	37.5	30	46	26	20	18.3	5	0.08~0.16
4.712	1.5	32	22	51	48	36	48	28	20	24.8	6	0.10~0.18
4.712	1.5	40	22	63	60	36	48	28	20	24.8	6	0.01~0.20
6.283	2	25	16	54	50	30	54	26	28	18.3	5	0.01~0.20
6.283	2	25	22	54	50	36	56	28	28	24.8	6	0.01~0.20
6.283	2	28	30	60	56	50	60	32	28	33.3	8	0.12~0.22
6.283	2	32	16	68	64	30	54	26	28	18.3	5	0.12~0.22
6.283	2	32	22	68	64	36	56	28	28	24.8	6	0.12~0.22
6.283	2	32	32	68	64	55	65	37	28	35.3	10	0.12~0.22
6.283	2	36	40	76	72	62	65	37	28	43.3	12	0.12~0.22
6.283	2	40	32	84	80	55	65	37	28	35.3	10	0.12~0.22
6.283	2	50	45	104	100	68	65	37	28	48.8	14	0.12~0.22
7.854	2.5	22	22	60	55	36	56	28	28	24.8	6	0.12~0.22
7.854	2.5	28	32	75	70	55	65	37	28	35.3	10	0.12~0.22
7.854	2.5	36	40	95	90	62	65	37	28	43.3	12	0.12~0.22
9.425	3	22	22	72	66	36	56	28	28	24.8	6	0.12~0.22
9.425	3	22	32	72	66	55	65	37	28	35.3	10	0.12~0.22
9.425	3	25	40	81	75	62	65	37	28	43.3	12	0.12~0.22
9.425	3	28	22	90	84	36	56	28	28	24.8	6	0.12~0.22
9.425	3	28	32	90	84	55	65	37	28	35.3	10	0.12~0.22
9.425	3	32	40	102	96	62	65	37	28	43.3	12	0.12~0.22
9.425	3	36	45	114	108	68	65	37	28	48.8	14	0.14~0.24
12.566	4	20	32	88	80	55	75	35	40	35.3	10	0.14~0.24
12.566	4	20	35	88	80	55	75	35	40	38.3	10	0.14~0.24
12.566	4	22	45	96	88	68	75	35	40	48.8	14	0.14~0.24
12.566	4	25	32	108	100	55	75	35	40	35.3	10	0.14~0.24
12.566	4	25	35	108	100	55	75	35	40	38.3	10	0.14~0.24
12.566	4	25	55	108	100	80	80	40	40	59.3	16	0.14~0.24
12.566	4	28	45	120	112	68	75	35	40	48.8	14	0.14~0.24
12.566	4	32	55	136	128	80	80	40	40	59.3	16	0.16~0.26
12.566	4	40	75	168	160	110	100	60	40	79.9	20	0.16~0.26
15.708	5	21	45	115	105	68	85	35	50	48.8	14	0.16~0.26
15.708	5	25	45	135	125	68	85	35	50	48.8	14	0.16~0.26
15.708	5	25	55	135	125	80	90	40	50	59.3	16	0.16~0.26
18.850	6	21	55	138	126	80	100	40	60	59.3	16	0.16~0.26
18.850	6	25	75	162	150	110	120	60	60	79.9	20	0.18~0.28

精度等级: DIN6h25(JIS2 级)

材 料: 42Cr(SCM420)

齿 形: 直齿

齿面处理: 磨削

硬度处理: 55~60 度 HRC

压 力 角: 20 度

Precision Grade: DIN6h25(JIS2 Grade)

Material: 42Cr(SCM420)

Type: Straight Rack

Treatment of Teeth: Ground

Hardness: 55~60 degree HRC

Pressure Angle: 20 degree

**Company Name:**

Tianjin OuNaiDa Transmissions Technology Co., Ltd.

**Operational Address:**

No. 10 Tengwang Road, Beichen District, Tianjin, China

**Website:**

<https://www.tjond.com>

